



O.P. JINDAL GLOBAL
INSTITUTION OF EMINENCE DEEMED TO BE
UNIVERSITY
A Private University Promoting Public Service

DOCTORAL PROGRAMME

PROSPECTUS

JGU | O.P. JINDAL GLOBAL UNIVERSITY

O.P. Jindal Global University (JGU) is a non-profit, multi-disciplinary and research oriented university founded in 2009. JGU was established as a philanthropic initiative of its Founding Chancellor, Mr. Naveen Jindal in memory of his father, Mr. O.P. Jindal.

JGU has 16,000+ students, 1100+ full-time faculty members, and 2900+ administrative staff in its fully residential campus. JGU's twelve schools focus on Law, Business & Management, International Affairs, Public Policy, Liberal Arts & Humanities, Journalism, Design & Architecture, Banking & Finance, Environment & Sustainability, Psychology & Counselling, Languages & Literature and Public Health & Human Development. Over the last decade, JGU has grown into an institution that brings full-time faculty from 50+ countries in the world, students from 160+ countries and has collaborated with 600+ leading institutions in 80+ countries which makes the learning experience truly international.

JGU is ranked Number 1 in the world with the highest overall score amongst all universities and awarded 'Gold' by the Times Higher Education (THE) Online Learning Rankings 2024. JGU has been ranked as India's Number 1 Private University for three years in a row by the prestigious QS World University Rankings 2023. JGU has been recognised among the Top 150 universities globally under the age of 50 years by the QS Young University Rankings.

JGU has also been recognised in the Top 500 Universities as per the QS Graduate Employability Rankings 2022. The Jindal Global Law School has retained its No. 1 rank in India for seven consecutive years and is ranked Top 35 globally for Law by the QS World University Rankings by Subject 2026. Furthermore, JGU holds the distinction of being India's top university for Politics & International Studies and is ranked Top 90 in the world. JGU also holds the position as India's top private university for Business & Management Studies (among Top 200 in the world), Social Sciences & Management (Ranked Top 232 in the world), Arts & Humanities (Ranked Top 323 in the world), Economics & Econometrics (among Top 500 in the world) as per the QS World University Rankings by Subject 2026. JGU is ranked No.1 University for Law and No.2 University for Psychology in India by the prestigious Times Higher Education (THE) World University Rankings by Subject 2026. In 2025, Jindal Global Business School (JGBS) was awarded the prestigious Association to Advance Collegiate Schools of Business (AACSB) International Accreditation — an accreditation earned by only 6% of business schools worldwide. In 2020, JGU was recognised as an 'Institution of Eminence' by the Ministry of Education, Government of India.





PROF. (DR.) KRISHAN K. PANDEY

DEAN'S MESSAGE

The linkage between digital technologies, constant collection and compilation of data points in multidisciplinary research across all the functional domains is changing the face of this 21st-century research. In line with this, Office of Doctoral Studies (ODS), is creating a multidisciplinary research culture and extending its support to all the research scholars across various schools for executing and sustaining a vibrant research culture at O.P. Jindal Global University (JGU). Our strengths and successes in research have already started to show impressive results. The Office of Doctoral Studies (ODS) at JGU is committed to expanding opportunities and creating an exemplary model for research excellence through industry and academia interface. Further, we are continuously enhancing our research capacities and outcomes through extended global collaborations and capacity building efforts. The goal of the Office of Doctoral Studies at JGU is to not only increase the quantity of research output but, more importantly, to ensure impact through high-quality research across all the schools. The doctoral programme at JGU provides an opportunity to take up rigorous courses in

different disciplines across all the schools, tailored to both their broad academic growth and the specialized needs of their own research. JGU is open to industry researchers through its part-time Ph.D. programme. The JGU faculty who have a wide range of substantive and methodological expertise, are integrally involved in the Ph.D. programme as supervisors and co-supervisors. The time you spend in JGU Ph.D. will critically challenge you to expand your learning as an emerging scholar so that you too can take your place among the leaders of your chosen profession. In a nutshell, JGU Ph.D. programme in its entirety will chase fundamental knowledge in critical areas of social science; it will identify, attract, and nurture talent to generate a strong force of young social scientists equipped to face the challenges of a new India, and open its doors to work jointly with like-minded individuals & institutions around the world. I truly believe that JGU is one of the greatest places in the world to do research and train the next generation of researchers.

JGLS

The PhD (Law) and PhD (Interdisciplinary) programme at JGLS aims to produce cutting edge research in the area of law and allied fields. A diverse faculty comprising law, social sciences, humanities and management, innovative pedagogy, world-class resources for research, an intellectually engaging peer group, and a robust curriculum will equip candidates with essential skills in theory, research, writing and presentation while deepening their knowledge of issues relevant to their research.

The PhD programme offers candidates an opportunity to contribute to the university's academic activities in their chosen areas of study through teaching assistantships and participation in research-related activities and seminars. It also provides doctoral students a platform to interact with faculty at JGLS and across JGU's 13 schools to learn new skills and open up diverse conversations across disciplines. In addition to faculty support, Jindal Global Library provides excellent resources in support of the students' doctoral research.

JGLS offers both full time and part time PhD programme enrolment over two admission cycles every year. Selected full-time PhD candidates will be considered for fellowships/stipends, in accordance with University policies and eligibility criteria.

BROAD AREAS OF RESEARCH

- Legal Theory
- Critical Legal Theory
- Queer studies / Theory and the Law
- Legal History
- Law and Society / Socio Legal Research
- Sociology of Law
- Law and Literature / Literary Studies
- Law and Economics
- Political Economy
- Constitutional Law / Constitutionalism
- Competition Law
- Corporate Law
- Criminal Law, Criminology
- Environmental Law
- International Human Rights / Humanitarian / Criminal / Economic / Investment Law
- Law and Technology
- Private International Law

For detailed information on faculty expertise and to explore potential supervisors, please visit the JGLS faculty webpage (<https://jgu.edu.in/jgls/faculty>).



Jindal Global Law School

India's First Global Law School

 Established in **2009**

 Faculty Members **481**

 International Faculty **49**

 Registered Ph.D. Students **53**

 Ph.D. Degree Awarded **13**

500+

Elective courses offered every semester in addition to 75 cross-listed inter-disciplinary electives.

25+ RESEARCH CENTRES

Collaborative Research Centres Like Centre for India- Australia Studies, Centre for India-China Studies and Jindal Initiative on Research in IP and Competition (JIRICO).

ELIGIBILITY CRITERIA*

- ▶ LLM with at least 55% marks or an equivalent grade.
- ▶ Master's degree in a discipline relevant to the proposed research with at least 55% marks or equivalent grade.
- ▶ Applicants with more than 3 years of industry / teaching / practicing/ managerial / professional experience will be given preference.
- ▶ Applicants will be selected based on their performance in the JGU Entrance Test followed by personal interview.

*Relaxation criteria as per UGC norms.

JGBS

JGBS fosters curriculum, research, and collaborations of the highest standards, and with a global perspective, through a faculty drawn from and educated throughout the world. The vision of JGBS is to impart global business education to uniquely equip students, managers and professionals with the necessary knowledge, acumen and skills so that they can effectively tackle challenges faced by transnational business and industry.

JGBS offers a multi-disciplinary global business education to foster academic excellence, industry partnerships and global collaborations. JGBS faculty is engaged in research on current issues including: Applied Finance, Business Policy, Decision Support Systems, Consumer Behaviour, Globalization, Leadership and Change, Quantitative Methods, Information Systems, and Supply Chain & Logistics Management. JGBS has established international collaborations with several leading international schools including the Naveen Jindal School of Management, University of Texas at Dallas, USA, Kelley School of Business, Indiana, USA, European Business School, Germany and the University of New Brunswick, Fredericton, Canada.

RESEARCH CENTRES

- Asia Pacific Business Research, Economics and Innovation
- Centre for Supply Chain and Logistics Management (CSCLM)
- Centre for Unique Branding Experience (CUBE)

BROAD AREAS OF RESEARCH

- Finance / Accounting
- Economics
- Marketing
- Human Resources / Organizational Behaviour
- Operations Management / Decision Science
- Strategy / Entrepreneurship

For detailed information on faculty expertise and to explore potential supervisors, please visit the JGBS faculty webpage (<https://jgu.edu.in/jgbs/faculty>).



JINDAL GLOBAL BUSINESS SCHOOL

INDIA'S FIRST MULTI-DISCIPLINARY GLOBAL BUSINESS SCHOOL



Established in 2010



Faculty Members 179



International Faculty 05



Registered Ph.D. Students 90



Ph.D. Degree Awarded 13

100+

Elective courses offered every semester

ELIGIBILITY CRITERIA*

- ▶ Master's Degree or any other degree recognized equivalent thereto in (a) Business Administration or Economics or Commerce or in allied subjects or in Engineering/ Technology with at least 55% marks OR (b) Post Graduate Diploma in Management recognized as equivalent to MBA by AICTE with 55% marks or equivalent grade therein.
- ▶ Professional qualification such as CA/ ICWA/ CFA/ CS (both 5 year integrated or 3 years after graduation) with minimum 50% marks.
- ▶ Applicants with more than 3 years of industry /teaching /practicing/managerial professional experience will be given preference.
- ▶ Applicants will be selected based on their performance in the JGU Entrance Test or an equivalent (UGC-NET/UGC- CSIR NET/ GATE/ CEED and similar National-level) examination, followed by personal interview.

*Relaxation criteria as per UGC norms.

JIBS

Jindal Institute of Behavioural Sciences (JIBS) is a pioneering research institute that is dedicated to exploring and understanding human behaviour from a multi-disciplinary perspective. Established in 2014, JIBS has quickly become a leader in the field of behavioural science research and pedagogy, known for its empirical approach and commitment to academic excellence.

At JIBS, we believe that the study of human behaviour is essential to understanding and addressing some of the most pressing challenges facing the contemporary world today. Our team of top researchers, from a range of disciplines, work together to conduct cutting-edge research that is both applied and experimental. Our areas of focus include mental health, competency mapping, neurosciences, neural decision sciences, psychobiology, management sciences, forensic studies, social psychology, and criminal behaviour.

We are proud to work with national and international researchers to tackle critical issues in human behaviour, from the micro-level of individual decision-making to the macro-level of societal trends. Our collaborative approach ensures that we stay at the forefront of behavioural science research, and that our findings have real-world applications that can make a difference in people's lives.

Over the years, JIBS has evolved into an institute of prominence in behavioural sciences and allied fields, also recognized for our commitment to quality pro-bono training to teachers and professionals that meets global standards. We are also a member of the Academic Council on the United Nations System (ACUNS), a testament to our dedication to using behavioural science research to advance global understanding and progress.

BROAD AREAS OF RESEARCH






- Child Psychology
- Cognitive Psychology
- Counselling Psychology
- Cross-Cultural Psychology
- Cyber Psychology
- Developmental Psychology
- Educational Psychology
- Family Studies
- Forensic & Criminal Psychology
- Gender Psychology
- Mental Health
- Organizational Psychology
- Psychometric Assessment and Validation
- Psychosocial Rehabilitation
- Positive Psychology
- Social Psychology
- Victimology & Criminology

RESEARCH LABS

- Brain Behaviour Laboratory
- Forensic Science Laboratory
- Financial Crimes Studies Laboratory
- Rehabilitation Centre
- Psychology Research Laboratory



JINDAL INSTITUTE OF BEHAVIOURAL SCIENCES

-  Established in **2014**
-  Faculty Members **40**
-  International Faculty **02**
-  Registered Ph.D. Students **38**
-  Ph.D. Degree Awarded **22**

114+

Elective courses offered every semester

RESEARCH CENTRES

- Centre for Victimology & Psychological Studies (CVPS)
- Centre for Leadership and Change (CLC)
- Centre for Community Mental Health (CCMH)
- Centre for Criminology and Forensic Studies (CCFS)
- Awareness for Community Transformation (ACT) Clinic

ELIGIBILITY CRITERIA*

- ▶ Master's Degree in a discipline relevant to the proposed research with at least 55% marks or equivalent grade.
- ▶ Applicants with more than 3 years of industry / teaching / practicing / managerial / professional experience will be given preference.
- ▶ Applicants will be selected based on their performance in the JGU Entrance Test or an equivalent (UGC-NET/UGC- CSIR NET/ GATE/ CEED and similar National-level) examination, followed by personal interview.

**Relaxation criteria as per UGC norms.*

For detailed information on faculty expertise and to explore potential supervisors, please visit the JIBS faculty webpage (<https://jgu.edu.in/jibs/faculty>).

JSIA

JSIA places strong emphasis on geo-politics and global studies that are largely affecting international relations in the age of globalization. Its distinguished faculty members will decide on the research centre(s) under which of the Ph.D. candidate's research may be based.

The knowledge and critical thinking skills you will acquire through the dedicated training and supervision you will receive at JSIA will equip you with deep insight into the complexity of international relations, politics and practice, and it will widen your vision of how international relations are shaping the world in which we live. The career options following completion of your doctoral degree will be as varied as they are distinguished, for instance: in the United Nations and other international organizations; the diplomatic service in your home country; management consultancy as world-leading MNCs; academia; or the media.

The Ph.D. programme at JSIA offers aspiring scholars an unparalleled opportunity to advance their academic and professional journey:

- To undertake deep and meaningful research on a subject with the support and supervision of world-leading scholars in the field in an institute with significant global connections and impact.
- To enhance your employment opportunities and receive recognition for your contribution to development of new knowledge in the field of International Relations, Public Policy, Diplomacy and Business.
- To undertake path breaking research collaborations with our international university partners in the United States, Europe and Asia.
- To be part of an active and multidisciplinary research community within Jindal Global University that seeks solutions to the complex issues that define and challenge contemporary international relations.
- To independently develop the knowledge and skills to understand, critique and reframe some of the fundamental problems in global affairs, and develop ideas that could reshape the future world order.

BROAD AREAS OF RESEARCH

Middle-East Studies | Peace And Conflict Studies | International Relations Studies and Global Affairs | Diplomacy and Foreign Policy | International Political Economy | European and Eurasian Studies | East Asian and Southeast Asian Studies | International Security | Defence and National Security | Global Affairs | Human Rights And Law | Israel Studies | UN System and Organisations And Latin-American Studies | African Studies, South Asian Studies, Global Governance

For detailed information on faculty expertise and to explore potential supervisors, please visit the JSIA faculty webpage (<https://jgu.edu.in/jsia/faculty>).



Jindal School of International Affairs
India's First Global Policy School

 Established in	2011
 Faculty Members	69
 International Faculty	19
 Registered Ph.D Students	43
 Ph.D Degree Awarded	16

50+ Elective courses offered every semester

16 RESEARCH CENTRES

Centre for Middle East Studies, Jindal Centre for the Global South, Centre for a New South Asia, Centre for African, Latin American and Caribbean Studies, Nehgimpao Kipgen Center for Southeast Asian Studies, Centre for Afghanistan Studies, Centre for Analytical Research and Engagement, Pankaj Kumar Jha Centre for Security Studies, Centre for European Studies, Centre for Global Governance and Policy, Jindal Centre for Israel Studies, Centre on Migration and Mobility Studies, Centre for Intelligence Research and Analyses, Centre for Northeast Asian Studies, Centre for the Study of Global International Relations, and Centre for Political Economy and Philosophy.

ELIGIBILITY CRITERIA*

- ▶ Master's Degree in a discipline relevant to the proposed research with at least 55% marks or equivalent grade.
- ▶ Applicants with more than 3 years of industry /teaching /practicing/managerial / professional experience will be given preference.
- ▶ Applicants will be selected based on their performance in the JGU Entrance Test or an equivalent (UGC-NET/UGC- CSIR NET/ GATE/ CEED and similar National-level) examination, followed by personal interview.

*Relaxation criteria as per UGC norms.

JSGP

JSGP is a research-driven school and is dedicated to generate ideas and knowledge about, and practices of democratized development. JSGP is engaging with the contemporary policy environment, which demand new imaginations, new methodologies and revitalised ethics. Through national and international collaborations, it promotes interdisciplinary studies, joint teaching and research programmes, and develops comparative perspective on global policy issues. JSGP offer students a well-grounded theoretical education and exposes them to the field in both rural and urban contexts and actual institutional mechanisms.

JSGP regularly invite academicians, activists, senior civil servants, politicians, NGOs, policymakers from UN and other international organisations to deliver lectures and interact with students and faculty.

BROAD AREAS OF RESEARCH

- Urban and Rural Transformation
- Gender Studies/Inequality
- Public Health
- Governance and Public Institutions
- Policy and Programme Design and Evaluation
- Public Economics and Finance
- Sustainable Development
- Complexity and Applied Spirituality

RESEARCH CENTRES

- Centre for Development and Finance
- Centre for Sustainability
- Complexity Economics and Applied Spirituality (CEASP)



For detailed information on faculty expertise and to explore potential supervisors, please visit the JSGP faculty webpage (<https://jgu.edu.in/jsgp/faculty>).



**Jindal School of Government
and Public Policy**
India's First Public Policy School

	Established in	2012
	Faculty Members	47
	International Faculty	03
	Registered Ph.D. Students	49
	Ph.D. Degree Awarded	04

50+

Elective courses offered every semester

ELIGIBILITY CRITERIA*

- ▶ Master's Degree in a discipline relevant to the proposed research with at least 55% marks or equivalent grade.
- ▶ Applicants with more than 3 years of industry /teaching /practicing/ managerial /professional experience will be given preference.
- ▶ Applicants will be selected based on their performance in the JGU Entrance Test or an equivalent (UGC-NET/UGC-CSIR NET/ GATE/ CEED and similar National-level) examination, followed by personal interview.

**Relaxation criteria as per UGC norms.*

IIHED

IIHed is an independent research institute within JGU that is focused on pursuing research and capacity building initiatives on different aspects of higher education in India and beyond. The vision of IIHed is to contribute towards institution building for nation building.

The establishment of the International Institute for Higher Education Research & Capacity Building (IIHed) rests on the growth and development of O.P. Jindal Global University (JGU) as a leading research - oriented global university in India that is contributing to promoting offers in higher education in conducts.

IIHed conducts research and offers advice on all aspects of higher education with a strong focus on curriculum development; pedagogical innovations; faculty engagement; faculty recruitment, retention and development; research and knowledge creation systems; promotion of scholarship and building research capacities; developing international collaborations; benchmarking and assessments of institutions; and for providing institutional support on law, policy and regulations relating to higher education.

Recently, IIHed ran a National-level survey on students experiences in the middle of COVID-19 pandemic in collaboration with the SERU Consortium at the University of California, Berkley and the Association of Indian Universities.

BROAD AREAS OF RESEARCH

- Comparative and International Higher Education
- Doctoral Education, Research and Development
- Skill Development in Higher Education
- Equity, Diversity & Inclusion in Higher Education
- AI & Digital Transformations in Higher Education
- Leadership & Professional Development in Higher Education
- Shadow Education & Transition to Higher Education

For detailed information on faculty expertise and to explore potential supervisors, please visit the IIHED faculty webpage (<https://jgu.edu.in/iihed/faculty>).



INTERNATIONAL INSTITUTE FOR
HIGHER EDUCATION RESEARCH &
CAPACITY BUILDING
Institution Building For Nation Building
O.P. JINDAL GLOBAL UNIVERSITY



Established in 2015



Faculty Members 05



International Visiting Professor 05



IIHED Senior Fellows 16



IIHED Fellows 07



Registered Ph.D. Students 12



Ph.D. Degree Awarded 02



RESEARCH CENTRES

- Centre for Comparative and Global Education (CCGE)
- Global Centre for Institutional Mentorship & Educational Excellence

ELIGIBILITY CRITERIA*

- ▶ Master's Degree in a discipline relevant to the proposed research with at least 55% marks or equivalent grade.
- ▶ Applicants with more than 3 years of industry /teaching /practicing/ managerial /professional experience will be given preference.
- ▶ Applicants will be selected based on their performance in the JGU Entrance Test or an equivalent (UGC-NET/UGC- CSIR NET/ GATE/ CEED and similar National-level) examination, followed by personal interview.

*Relaxation criteria as per UGC norms.

JSDA

The Jindal School of Design and Architecture (JSDA) works from an ethos of questioning and experimentation across disciplines including architecture, design, and multiple adjacent knowledge domains. The School's doctoral programme is seeking to expand the development of design-driven knowledge, questioning, and pragmatic design-research methods. We encourage researchers to tackle real-world challenges from a theoretically robust and pragmatically nuanced perspective to produce effective and equitable solutions.

The programme invites researchers and educators working on any aspect of the built environment to start on their doctoral studies at JSDA. The programme offers a full-time pathway (on JGU campus) or part-time pathway (remotely across India) for interdisciplinary research, informed by an understanding of the inherited and future built environments – environments understood as discernible processes, built by humans or nonhumans, alone or jointly, facilitated by active geophysical processes. In other words, if you recognise that a forest is as much a built environment as an igloo, then JSDA is the place for you.

Students will take university-level coursework in research methods, critical and creative thinking, design philosophy, and ethics, and school-level elective coursework in materials and making, as urban studies, and interiors. Thinking will be tested through wider forms of evidence so as to make original contributions to knowledge of expanded fields of trans-disciplinary practice. International educators, international; standards, and international experience for Ph.D. students are the unique benchmarks of this programme.

BROAD AREAS OF RESEARCH

- Philosophy of Design
- Critical Aesthetics
- Architectural Ethics
- Architectural History-Theory
- Landscapes & Future Environments
- Design and Culture
- Architectural Intelligences
- Spaces of Cinema and Performance
- Politics, image, identity, knowledge
- Making, materiality, object
- Sustainability, development and equity
- Political ecology, environmentality, nature, culture dualism, governance
- Society, culture, virtual-physical worlds
- Road safety law and policy, public infrastructure, informal transport networks
- Public health
- Urban development policy
- Interactions between the morphology of the built environment, air quality and the urban heat island effect



For detailed information on faculty expertise and to explore potential supervisors, please visit the JSDA faculty webpage (<https://jgu.edu.in/jsda/faculty>).



**Jindal School of
Design & Architecture**
India's Global Design and Architecture School

 **Established in** 2018

 **Faculty Members** 37

 **International Faculty** 02

20
Elective courses offered every semester

RESEARCH LABS

- Digital Centre
- Surveying & Levelling Lab
- Fabrication Lab
- Construction Materials Lab
- VR Lab

ELIGIBILITY CRITERIA*

- ▶ Masters in Architecture, Masters in Design or Master's Degree in a discipline relevant to the proposed research with at least 55% marks or equivalent grade.
- ▶ Applicants with more than 3 years of industry / teaching / practicing / managerial / professional experience will be given preference
- ▶ Applicants will be selected based on their performance in the JGU Entrance Test or an equivalent (UGC-NET/UGC- CSIR NET/ GATE/ CEED and similar National-level) examination, followed by personal interview.

*Relaxation criteria as per UGC norms.

JSBF

The Ph.D. programme at Jindal School of Banking & Finance (JSBF) is designed to prepare future professionals for challenges that require an integrated view of the inner-workings of financial markets and institutions. In addition, students can expect to gain a thorough understanding about financial decision-making and its modelling. Students will develop the ability to independently analyse and formulate research questions to propose and implement creative solutions for contemporary issues faced by decision-makers, entrepreneurs and financial market participants.

BROAD AREAS OF RESEARCH

Finance:

Corporate Finance, Entrepreneurial Finance, Sustainable Finance, Behavioural Finance, Investments and Portfolio Management.

Economics:

Behavioral Economics, Macroeconomics, Indian Economy, Development Economics, Labor Economics, Financial Economics.

Accounting:

Earnings Management, Corporate Governance, Fraud and Forensics, Public Policy Accounting, Digital Accounting, Taxation.

Strategy, Governance and Technology:

Digital Transformation and platform, AI & Governance, Technology, sustainability and Regulation, Digital currency and Fintech, Firm strategy and industry.

ELIGIBILITY CRITERIA*

- ▶ Post-graduate degree with at least 55% or equivalent grade in commerce, economics, business, psychology, behavioural sciences, mathematics, engineering or related areas. Post Graduate Diploma in Management recognized as equivalent to MBA by AICTE with 55% marks or equivalent grade.
- ▶ Professional qualification such as CA/ ICWA/ CFA/ CS (both 5 year integrated or 3 years after graduation) with minimum 50% marks.



For detailed information on faculty expertise and to explore potential supervisors, please visit the JSBF faculty webpage (<https://jgu.edu.in/jsbf/faculty>).



**JINDAL SCHOOL OF
BANKING & FINANCE**
India's First Global Finance School



**Established
in 2018**



**Faculty
Members 55**



**International
Faculty 01**



**Registered
Ph.D. Students 08**

28

Elective courses offered every semester

RESEARCH CENTRES

Economics and Finance for Society Initiative (EFSI), Finance and Accounting Society (FAS), Centre For Research & Analysis In Finance, Technology & Law (CRAFT & LAW)

- ▶ Applicants with more than 3 years of industry /teaching /practicing /managerial professional experience will be given preference.
- ▶ Applicants will be selected based on their performance in the JGU Entrance Test or an equivalent (UGC-NET/UGC- CSIR NET/ GATE/ CEED and similar National-level) examination, followed by personal interview.

*Relaxation criteria as per UGC norms.

JSES

The Jindal School of Environment & Sustainability (JSES) is working to lead the world towards a sustainable future with innovative teaching, practice-based learning and impact-driven research. The world today is facing an increasing array of environmental challenges that require greater levels of innovation and collaboration among industry, government, academia and communities at large. The ongoing environmental crises are accompanied by lacunae in human resource development and relevant research at various levels. JSES aims to fill this gap by combining theory and practice of environment & sustainability studies, research, outreach, advocacy and capacity building. The primary goal of JSES is to offer students a concentration in environment and sustainability studies with opportunities to explore how humans interact with the environment, including physical, biological, economic, philosophical, social and legal elements. JSES boasts a cumulative impact factor of over 1200.

BROAD AREAS OF RESEARCH

- Ecology and Evolution
- Biodiversity and Conservation
- Wildlife and Conservation
- Environmental Pollution and Health
- Environmental Science and Technology
- Environmental Philosophy and Ethics
- Marine and Coastal Environment
- Environmental Management
- Environmental Geology
- Natural Hazards and Disaster Resilience
- Environmental Biology
- Behavioural Ecology



For detailed information on faculty expertise and to explore potential supervisors, please visit the JSES faculty webpage (<https://jgu.edu.in/jses/faculty>).



**JINDAL SCHOOL OF
ENVIRONMENT & SUSTAINABILITY**
India's First Interdisciplinary Environment & Sustainability School



Established in ▶ 2020



Faculty Members ▶ 09



International Faculty ▶ 01



Registered Ph.D. Students ▶ 02

RESEARCH CENTRES

- Global Institute for Advanced Sustainability Studies.
- Environmental Law and Science Advocacy Forum.
Centre for Biodiversity and Conservation

ELIGIBILITY CRITERIA*

- ▶ Master's degree in Science/Social sciences/Technology/Engineering and/or related subject with at least 55% marks or equivalent grade.
- ▶ Applicants with more than 3 years of teaching/research/relevant practice/managerial/professional experience will be given preference.
- ▶ Applicants will be selected based on their performance in the JGU Entrance Test or an equivalent (UGC-NET/UGC-CSIR NET/ GATE/CEED and similar National-level) examination, followed by personal interview.

JSLL

The Jindal School of Languages and Literature (JSLL) is in the vanguard of the university's mission to be a premier institution for language, literature and cultural studies. The PhD programme in English Studies is designed to train scholars to work in advanced methodologies and to work in an innovative way while responding to developments in the broad area of English Studies and of adjacent fields such as linguistics, comparative literature, translation studies and cultural studies. Doctoral scholars in this programme will benefit from formal teaching, mentoring and supervision by several dozen research-active JGU faculty – many of them internationally trained – working in the aforementioned areas. The programme welcomes scholars, creative practitioners and in-service educators who aspire to give their work a scholarly grounding. Part-time engagement in the programme is facilitated by longer time periods allowed for course work and completion of a final research plan, but standards of achievement will be no less rigorous than those for full-time scholars. With over 40 affiliated faculty members at JGU, the Jindal School of Languages and Literature offers a strong and diverse academic base.

BROAD AREAS OF RESEARCH

- ▶ Literature of various English-es (British, American, Indian and other English literatures)
- ▶ Literary and cultural theories and their applications
- ▶ Stylistics and narratology studies
- ▶ Translation studies
- ▶ Comparative literature
- ▶ Philology and comparative linguistics
- ▶ English language education; English in non-literary contexts



For detailed information on faculty expertise and to explore potential supervisors, please visit the JSLL faculty webpage (<https://jgu.edu.in/jsll/faculty>).



**JINDAL SCHOOL OF
LANGUAGES & LITERATURE**
India's Global School of Language & Literature Studies



Established in ▶ 2021



Faculty Members ▶ 10



International Faculty ▶ 03



Registered Ph.D. Students ▶ 09

AFFILIATED RESEARCH CENTRES

- English Language Centre
- Centre for Foreign Languages
- Centre for Writing Studies
- Centre for Translation, Print, and Publishing Studies

ELIGIBILITY CRITERIA*

- ▶ Master's degree in a relevant subject/field with marks of at least 55% or with equivalent grade.
- ▶ Applicants will be selected based on JGU entrance test and through entrance interview that shall include presentation of a research proposal/provisional statement of research.
- ▶ Applicants will be selected based on their performance in the JGU Entrance Test or an equivalent (UGC-NET/UGC- CSIR NET/GATE/ CEED and similar National-level) examination, followed by personal interview.

**Relaxation criteria as per UGC norms.*

JSLH

Jindal School of Liberal Arts and Humanities is India's first transnational humanities school, weaving through multiple spheres of social sciences, arts, culture, literature, nature, and cognitive sciences. Envisioned within such an interdisciplinary framework, our Ph. D. program emphasizes the growing need of interconnected learning for sustainable human development in the 21st century. In the process, we aim to train and equip the next generation educators, practitioners, researchers, and leaders, with industry-ready, high market-value tools and techniques, to harness their creative and critical thinking skills for future nation building and betterment of society. Our distinguished faculty have received their MS/MA, doctoral, and post-doctoral degrees from the leading institutions of the US, UK, France, Germany, Italy, Israel, Australia, besides various universities of India and Southeast Asia, and published extensively in international journals, as well as literary, culture, and art magazines, of the highest repute.

BROAD AREAS OF RESEARCH

- **Literary, Performance and Cultural Studies:** Edwardian and Modernist British Literature; Indian English Writing, Comparative Literature (Urdu-Hindi); Literary Translation; Contemporary Theatre; Feminist Cultural Theory; Post-colonial Performance and Literary Culture
- **Political Science-IR:** Nationalist Studies; Political Theory; China Studies; Asian Security; Indian Politics, Parties, and Movements
- **Psychology:** Art, Mental Health and Well-Being; Psychopathology; Differences in Sex Development; Development in Late Adulthood; Culture and Psychology, Social Identity
- **Sociology:** Migration and Diaspora; Education; Governance and Development; Visual Anthropology; Cities, Space & Culture; Science and Medicine; Digital Sociology; Culture and Identities; Economic Anthropology
- **Philosophy:** Philosophy of Mind/Language (Western/Indian); Epistemology (Western/Indian); Moral and Political Philosophy (Western/Indian); Analytical/Continental; Anglophone Indian Philosophy
- **History:** Migration and Citizenship; Early Islam; Contemporary Islam; Contemporary Buddhism; Tibetan Exile
- **Environment and Sustainability:** Water Resources Research, Air Quality, Waste-Circular Economy, Environmental Policy; Energy Transition, Climate-smart Agriculture, Soil-Water Pollution, Green Marketing, Environmental Geoinformatics, Gender and Environment, Environmental Health
- **Economics:** Development Economics; Political Economy; International Trade; Environmental Economics; Public Policy

For detailed information on faculty expertise and to explore potential supervisors, please visit the JSLH faculty webpage (<https://jgu.edu.in/jslh/faculty>).



**Jindal School of
Liberal Arts & Humanities**
India's First Transnational Humanities School



**Established
in** 2014



**Faculty
Members** 51



**International
Faculty** 07



**Registered
Ph.D. Students** 03

25+

Elective courses offered every semester

RESEARCH CENTRES

- Centre for New Economic Studies (CNES);
- Centre for Social and Political Research;
- Jindal Centre for Visual Arts;
- Centre for Environment, Sustainability and Human Development (CESH)

ELIGIBILITY CRITERIA*

- ▶ Master's Degree in a discipline relevant to the proposed research with at least 55% marks or equivalent grade.
- ▶ Applicants with more than 3 years of industry /teaching /practicing/ managerial /professional experience will be given preference.
- ▶ Applicants will be selected based on their performance in the JGU Entrance Test or an equivalent (UGC-NET/UGC-CSIR NET/ GATE/ CEED and similar National-level) examination, followed by personal interview.

**Relaxation criteria as per UGC norms.*

JSJC

In a rapidly changing media landscape, the Jindal School of Journalism and Communication focuses on training its students in a variety of skills across fields such as journalism, new media, film and corporate communications. Each programme at JSJC rests on the foundations of scholarly engagement in the social sciences and training in practical skills required for the job market (particularly radio, television, print and digital media).

The Ph.D. programme is envisioned to provide a unique opportunity to early career researchers, as well as working professionals with industry experience, who aspire to conduct rigorous and critical interdisciplinary enquiry on changing contours of media, communication, visual culture, film and cultural studies. The programme also offers a part time approach to individuals who aim to engage with both theory and praxis.

Open to postgraduates from allied disciplines, the programme offers full-time and part-time positions to prospective candidates. Incoming scholars will be mentored by professors from a wide variety of disciplines, including but not limited to history, economics, environment, media studies, visual studies, film studies and gender studies.

BROAD AREAS OF RESEARCH

- ▶ Media and Communication Studies
- ▶ Film & Cultural Studies
- ▶ New Media and Digital Humanities
- ▶ Visual Cultures
- ▶ Transnational Media Cultures
- ▶ Print, Broadcast and Digital Journalism
- ▶ Social Sciences and the Media
- ▶ Media and the Anthropocene
- ▶ Gender, Media and Culture



For detailed information on faculty expertise and to explore potential supervisors, please visit the JSJC faculty webpage (<https://jgu.edu.in/jsjc/faculty>).



Jindal School of
Journalism & Communication
India's First Global Media School

 **Established in** ▶ 2017

 **Faculty Members** ▶ 23

 **Registered Ph.D. Students** ▶ 04

RESEARCH CENTRES

- New Imaginations: Centre for Peace, Conflict and Justice
- Centre for Media Development & Communication Rights

ELIGIBILITY CRITERIA*

- ▶ Master's Degree in a discipline relevant to the proposed research with at least 55% marks or equivalent grade.
- ▶ Applicants with more than 3 years of industry experience can apply for a part time Ph.D.
- ▶ Applicants will be selected based on their performance in the JGU Entrance Test or an equivalent (UGC-NET/UGC- CSIR NET/ GATE/ CEED and similar National-level) examination, followed by personal interview.nation, followed by personal interview.

**Relaxation criteria as per UGC norms.*

JSPH

Established in 2021, the Jindal School of Public Health and Human Development (JSPH) is a hub for innovation for public health training, research and action to meet the constantly evolving and dynamic needs of public health in India and across the world. JSPH offers graduate studies programs at the master's and doctoral levels, aimed at providing students with a world-class training that will open exciting career paths in public health and human development.

Train global thought leaders who can strengthen the governance of public health in India and contribute to global health by positioning India to provide global leaders in public health innovation and impact. Inculcate a multidisciplinary perspective among the students and faculty through a global curriculum taught by an international faculty and enriched by meaningful international collaborations. Promote cutting-edge research that fuels innovation in public health not only in India, but across the world, with a direct impact on advancing the goals of public health and sustainable human development.

Establish meaningful collaboration among public and private institutions, civil society organizations, and academia to facilitate the flow of knowledge and create quality-driven work opportunities for youth with an interest in public health and human development. Mentor and enable skilled individuals to be able to meet the human resource demands of public health administration and research in India.

Create an interdisciplinary learning environment based on the concept of human development and a community of well-rounded individuals with a broad perspective on public health. The Prof. Suman Kapur Memorial Endowment supports graduate learning for meritorious female students

BROAD AREAS OF RESEARCH

- Health Inequalities, Human Rights and Human Development
- Health Systems and Health Services Research
- Environmental Health, Planetary Health, including One Health, Infectious Diseases
- Humanitarian Health and Healthcare in Conflict Settings
- Gender, sexuality and health, including on women's empowerment in health access and use
- Sexual and Reproductive Health, including Family Planning, Maternal and Child Health
- Mental Health and Wellbeing in Diverse Settings
- Disability and Inclusion for Health
- Social, structural and environmental determinants of non-communicable diseases
- Social and Behaviour Change and Communication
- Access to medicines and issues such as HIV/AIDS
- Ageing, palliative care, geriatric care and life course epidemiology Health Policy and Systems Research (HPSR), including policy and governance, globalisation, health services and implementation research.
- Commercialisation of health and health services
- Physical Injuries and burn injuries to be added along with Disability and Inclusion



JINDAL SCHOOL OF PUBLIC HEALTH & HUMAN DEVELOPMENT

India's first Interdisciplinary School for Public Health & Development



Established in 2021



Faculty Members 09



International Faculty 01



Registered Ph.D. Students 05

RESEARCH CENTRES

- Centre for Humanitarian Studies
 - Centre on Implementation Research
- International Collaborations include civil society organization such as Médecins Sans Frontiers (MSF), and universities, such as University of Leeds, University of Southampton, Deakin University and Harvard University.

ELIGIBILITY CRITERIA

- ▶ Applicants must have received a Master's Degree in a discipline relevant to the proposed research (such as Public Health or Global Health) with at least 55% marks or equivalent grade.
- ▶ Applicants with more than 3 years of industry experience can apply for a part-time Ph.D.
- ▶ Applicants will be selected based on their performance in the JGU Entrance Test or an equivalent (UGC-NET/UGC-CSIR NET/ GATE/ CEED and similar National-level) examination, followed by personal interview.

**Relaxation criteria as per UGC norms.*

For detailed information on faculty expertise and to explore potential supervisors, please visit the JSPH faculty webpage (<https://jgu.edu.in/jsph/faculty>).

JSPC

The Jindal School of Psychology and Counselling (JSPC) aims to nurture a vibrant academic and research culture via an internationally accomplished group of faculty members and a rigorous but customizable curriculum. Instruction is characterized by a strong commitment to push the boundaries of excellence at the interface of psychology, counselling, and allied behavioural science disciplines. Students will benefit from a strong culture of interdisciplinary research and hands-on real-world experience via a robust internship programme. The scientist-practitioner model will be utilized, nurturing student's ability to integrate psychological theory, research, and practice.

JSPC aims to be recognized as a preeminent national and international leader in psychological education by maintaining the highest academic standards. Students gain expertise in psychological theory, experimentation, and practice in a rich and vibrant intellectual environment, led by a diverse group of research-active faculty scholars. Over four years, students learn the value of critical and creative thinking, coupled with instruction in the diverse sub-disciplines of psychology, including the best mental health assessment and treatment procedures. Students gain real-world experience through practicums and assorted internship opportunities, while the school's collaborations with eminent universities around the world provide ample opportunity to study abroad. JSPC strives to provide the requisite knowledge, skills, and opportunities for students to stretch themselves personally and academically, promoting an enriching college experience.

JSPC is committed to providing students with the knowledge, skills, experience, and opportunities to succeed in the workplace or academia, preparing students to assume productive and socially responsible leadership roles. In essence, JSPC aims to educate the psychologists of today, who will enrich and improve the world of tomorrow.

BROAD AREAS OF RESEARCH

- ▶ Cognitive Neuroscience
- ▶ Emotion and Cognition
- ▶ Counselling Psychology
- ▶ Mental Health
- ▶ Neuropsychology
- ▶ Neurodiversity
- ▶ Health Psychology
- ▶ Behavioural Medicine
- ▶ Addiction
- ▶ Gerontology
- ▶ Psychometrics
- ▶ Trauma and Recovery
- ▶ Indian Psychology
- ▶ Meditation and Mindfulness
- ▶ Emotional Intelligence
- ▶ Sustainable Development

For detailed information on faculty expertise and to explore potential supervisors, please visit the JSPC faculty webpage (<https://jgu.edu.in/jspc/faculty>).



**Jindal School of
Psychology & Counselling**
India's First Transdisciplinary Psychology School



Established in ▶ 2021



Faculty Members ▶ 50

30

Elective courses offered every semester



RESEARCH CENTRES

- NE-Cog: Centre of Emotion and Cognition
- Centre for Neurodiversity Studies
- Aagahii, the Centre for Psychotherapy Research and Training



RESEARCH LABS

- Brain Behavior Laboratory
- Psychology Research Laboratory

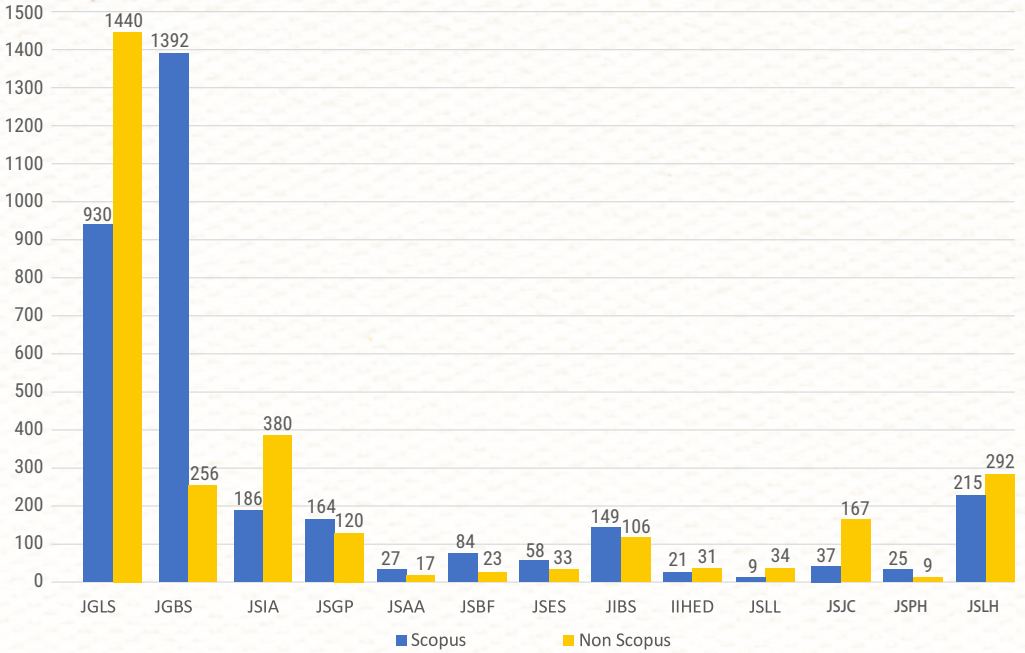
ELIGIBILITY CRITERIA*



- ▶ Applicants will be selected based on their performance in the JGU Entrance Test or an equivalent (UGC-NET/UGC-CSIR NET/GATE/CEED and similar National-level) examination, followed by personal interview.nation, followed by personal interview.

**Relaxation criteria as per UGC norms.*

PUBLICATION @JGU



SCHOOL	NO. OF STUDENTS AWARDED	YEAR
JIBS	2	2019
JGLS	1	
JIBS	3	2020
JSIA	3	
JGBS	1	2021
JGBS	2	
JIBS	4	2022
JSGP	1	
JGLS	3	2023
JIBS	3	
JSIA	2	2024
JSIA	7	
JGLS	4	2025
JIBS	3	
JGBS	4	2025
JIBS	5	
JGLS	4	2025
JSIA	2	
JSGP	1	2025
JGBS	6	
JIBS	2	2025
JGLS	3	
JSIA	2	2025
JSGP	2	
IIHED	2	2025

KEY FEATURES OF THE Ph.D. PROGRAMME@JGU



- 01** Each school at JGU offers a limited number of fellowships based full time Ph.D. positions.
- 02** Ph.D. scholar at JGU are entitled to avail Research Publication Award, Conference Grant, Contingency Grant etc.
- 03** Full time Ph.D. Scholars at JGU will be given a complimentary health insurance coverage.
- 04**

24x7 access to JGU library resources on campus as well as online.

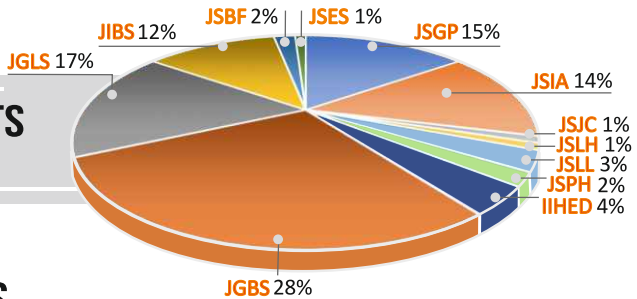
89,184 +
Print volumes

400,100+
E-Books

12,799+
E-Journals

1516+
Media Resources

DOCTORAL STUDENTS REGISTERED



INTERNATIONAL DOCTORAL STUDENTS

3.49%	AFGHANISTAN	0.39%	BRAZIL
1.55%	NEPAL	0.39%	KENYA
1.16%	CHINA	0.39%	NIGERIA
1.16%	SYRIA	0.39%	OMAN
1.16%	UK	0.39%	SRI LANKA
0.78%	MOZAMBIQUE	0.39%	UAE
0.78%	BANGLADESH	0.39%	USA

INTERNATIONAL COLLABORATIONS

575+ Collaborations with International Universities & Higher Education Institutions

10 Forms of Global Partnerships

80+ Countries & Regions

250+ Faculty & Student exchange collaborations

100+ Countries represented by students

4 RESEARCH & CAPACITY BUILDING INSTITUTES



6050+
Research Publications

1:9
Faculty-Student ratio

31%
Ph.D. Students on Scholarship

49%
Female Ph.D. Students

51%
Male Ph.D. Students

13%
International Ph.D. Students

TOP 2.67% OF 28,000
Universities in World

TOP 3% OF 13,000
Universities in ASIA

TOP 3% OF 9,000
Universities in BRICS

WORLDWIDE

REPRESENTATION OF Ph.D. SCHOLARS



CATEGORIES OF ADMISSION

Applicants shall be admitted to the Ph.D. programme under one of the following categories:

A Full-time*
with fellowship.

B Part-time*
without fellowship.

**Full-time Ph.D. Student "means a person enrolled in the Ph.D. programme devoting full-time to completing the requirements of the degree."*

***Part-Time Ph.D. Student "means a person who is registered in the Ph.D. programme devoting part of his/ her time for completing the requirements of the degree while discharging other employment obligations."*

DURATION OF Ph.D.

The minimum and maximum period of study and research shall be three (3) years and Six (6) years respectively from the date of registration of the student.

COURSE WORK

All candidates admitted to the Ph.D. programmes are required to complete a course work in the first 12 months in case of the full time programme and 18 months in the case of the part time programme. The course work comprises both credit and audit courses. The minimum credit load is of 12 credits and the maximum 22. The maximum credit load may go up depending upon the school's requirements.

ATTENDANCE REQUIREMENTS

It is mandatory for all the Ph.D. students to attend the course work classes as prescribed by the University/ School. In order to meeting the mandatory residential requirement, all the Ph.D. students are required to spend a minimum of 7 days per semester to seek professional guidance from their thesis advisory committee members and /or to avail the library / laboratory facilities.



FELLOWSHIP ASSISTANCE

All candidates admitted to the Ph.D. programmes under the JGU fellowship scheme will be given a monthly stipend of ₹35,000/- during Ph.D. course work. Following successful completion of the PhD coursework, submission of the Synopsis, and involvement in teaching one course per semester, the fellowship amount may be raised to ₹40,000 per month. Any such increment is contingent upon approval from the School Doctoral Committee / Universal Doctoral Committee.

FEE DETAILS*

All candidates admitted to the Ph.D. programmes (full time & part time) shall pay the prescribed University fees at the beginning of each semester, until the submission of their thesis.

Prospective Ph.D. students must submit an online application fee of ₹3000/- when they submit their application. Upon admission to the Ph.D. program, they are also required to pay a one-time registration fee of ₹10,000, in addition to an institute amenities security deposit of ₹10,000/-, which is refundable.

The tuition fee for Part time Ph.D. students is ₹1,00,000/- per semester whereas full time Ph.D. students under the JGU Fellowship scheme are entitled to pay only ₹50,000/- per semester.

*Subject to change

PRORAMME ROUTE MAP



01

Application received online on rolling basis for Fall (August) & Spring (February) semesters.

02

Eligible candidates are Invited for JGU Research Aptitude Test (RAT) (Exemption as per UGC Act).

03

After Successful completion of RAT, candidates are invited for Interview.

04

Registered as Ph.D. student at JGU after Successful completion of interview.

05

Coursework for Compulsory & elective papers, Supervisor selection.

06

Research Proposal/Synopsis Presentation, literature review & Data Collection.

07

Publication of Research papers, Pre-submission / Abstract Presentation.

08

Thesis Submission & Evaluation.

09

VIVA VOCE & Award of Degree.

* JGBS, JSIA and JSLL admit student only in fall semester

SCHOLARS VOICE



Ms. Tanushree Pareek

*Assistant Commandant,
Border Security Force*

“ I am privileged to be a part of the O.P. Jindal Global University fraternity. My Ph.D. journey has been a voyage of discovery and deep learning, guided and supported by the very learned faculty and seniors.”

Ms. Swaroopa Karnick

Deputy Commissioner, Udupi



“ I am finally living my childhood dream of doing research. This has been made possible only because of JGU. The University is very welcoming, having a class of its own in each of its schools. The warmth of the faculty, their proactive support and encouragement to take up research at this stage of career and life is extremely inspiring motivating us students to better ourselves each day. I am very happy that I took the decision to join the Ph.D. programme at the right time and the right place. ”



Mr. Abhyuday Singh Shekhawat

*Officer on Special Duty, Secretariat,
Vice President of India*

“ Joining Ph.D. in JGU has been a hugely satisfying experience for me. A beautifully designed and coordinated programme, the first semester of Course Work has been full of learning.”

Mr. Manish Mohan Govil

*Indian Revenue Service (Customs & Indirect Tax)
Department of Revenue, Ministry of Finance*



“ It is my immense luck and fortune to be the part of O.P. Jindal Global University. The entire faculty and department leaves no stone unturned to shape one's future. My Ph.D. Journey at JGU is a wonderful experience of learning with prolific exposure to outside. Huge respect, love and devotion for entire faculty members and department. It is their efforts that make me to count myself into better professionals. ”



Mr. Karthik G Iyer

*Counsellor (Political, Information and S&T)
Embassy of India, Beijing*

“ I've been on a steep learning curve ever since I joined JGU and it has been a very rewarding experience.”

Mr. Sandeep Arya

Ambassador of India, Kingdom of Bhutan



“ I'm part of the Ph.D. programme here since Spring 2021 and have immensely enjoyed the learning process, especially the insights received from understanding the basics of research methodologies and other related courses. I have found the support from ODS, JGBS and the entire faculty helpful and encouraging. ”

ALUMNI VOICE



Dr. Suchibrata Roy

Political Scientist & Researcher, Faculty of Social Sciences, Charles University, Prague

“My time in the PhD program in JGU has been nothing short of transformative. From the collaborative research environment that fostered groundbreaking discoveries to the supportive faculty who guided me every step of the way, I am truly grateful for the invaluable experiences and opportunities this program has provided. It is not just about the knowledge gained, but also the lifelong connections forged and the profound impact it has had on shaping my academic journey.”

Justice (Dr.) Ala Kunnil Jayasankaran Nambiar

Judge, Kerala High Court



“Initially daunting, I balanced judicial duties at the Kerala High Court with pursuing a law doctoral program at Jindal Global Law School during the COVID-19 pandemic. After passing the entrance exam, I was admitted as a candidate. Online coursework posed challenges, but the interdisciplinary approach and critical thinking discussions enriched my understanding. With guidance from Prof. C. Rajkumar and Prof. S.G. Sreejith, I earned my doctoral degree in August 2023, grateful for their support.”



Dr. Jeevandeep Sehgal

Associate Professor - SoEn & Director – HR, Rishihood University

“My journey through the Ph.D. program at Jindal Institute of Behavioural Sciences, O.P. Jindal Global University, was truly transformative. Guided by dedicated mentors, I explored new horizons in research, supported by unparalleled faculty who provided invaluable guidance and training. The seminars and workshops organized by the office of doctoral studies expanded my perspectives and enriched my understanding. Grateful for the experiences and knowledge gained, I carry them forward into my future endeavors with heartfelt appreciation for my alma mater.”

Brig (Dr.) Sujay Ranjan Chauhduri (Retd.)

FIE Director, Army Institute of Management, Kolkata



“In my doctoral journey at Jindal Global University, immersed in inclusive education, I've learned its power in enriching learning by celebrating diversity. Grateful to JGU for fostering growth, my mentors' unwavering support fueled my perseverance. For future scholars, JGU offers constant mentorship in a positive learning environment, guiding academic voyages with care.”



Dr. Vijay K Dev

State Election Commissioner of Delhi

“The JGU PhD framework has profoundly elevated my doctoral journey, cultivating a dynamic, collaborative culture and steadfast mentorship. This supportive milieu has sharpened my analytical acumen and expanded my scholarly outlook. The program's structured guidance has been pivotal in crafting robust research methodologies, while access to cutting-edge resources has accelerated my progress. I am deeply grateful for the transformative opportunities within this enriching academic ecosystem.”

Dr. Anupama Raju

Poet, Literary Journalist, Communications Professional and Translator



“The JGU research community has shaped my PhD journey through collaborative work and strong faculty support. The interdisciplinary environment broadened my perspectives and fostered a holistic understanding of my field. JGU's commitment to excellence equipped me with tools for a successful career and a lifelong passion for learning. Guided by teamwork and mentorship, faculty and peers have profoundly elevated my research and aspirations.”

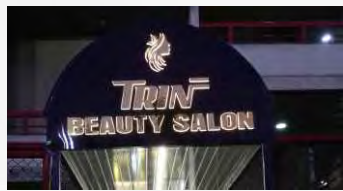


AMENITIES & FACILITIES

University hall of residence for students consists of several blocks of buildings designed by a French Architect.

University has:

- 24x7 health center with medical officer.
- Center for wellness and counselling.
- Washex hospitality solutions.
- 24x7 Security.
- State of the art sports facility includes badminton, tennis, basketball courts, cricket ground, football, volleyball, swimming pool, indoor games, gymnasium, yoga & aerobics.
- Multi-cuisine dining facility.
- Fully functional branch of ICICI bank with ATMs (ICICI bank and others) on several locations.
- Post office extension/courier office.

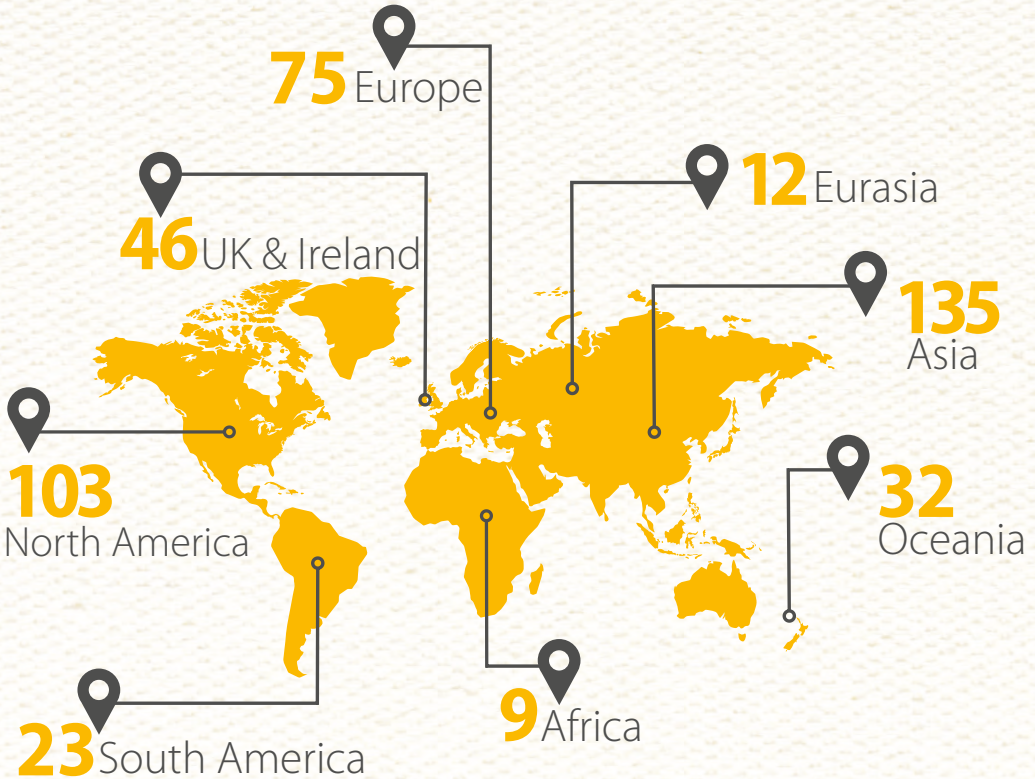


A world class food court - Outlets at this food court provide multi-cuisine options through brands such as Baskin Robins, Dominos, Subway, Bercos, Moti Mahal, Chaayos, Malgaadi Dhaba, Oki Poki, Dunkin Donuts, Nirula's, Bikanervala, Mahabelly etc.

OTHER FACILITIES

APOLLO PHARMACY	AMUL ICE CREAM PARLOUR	CAFÉ COFFEE DAY TUCK SHOP
JUICE & MORE TUCK SHOP	CHAI TAPRI	TRIN BEAUTY SALON
STARBUCKS	CONVENIENCE STORE	REPROGRAPHIC CENTRE
NESTLE TUCK SHOP	LOOKS TAILORING HOUSE	

INTERNATIONAL COLLABORATIONS



O.P. JINDAL GLOBAL
INSTITUTION OF EMINENCE DEEMED TO BE
UNIVERSITY
A Private University Promoting Public Service

FOR ADMISSIONS, CONTACT
Office of Doctoral Studies

+91 839 690 7333 PhD.admissions@jgu.edu.in

O.P. Jindal Global University, Sonipat Narela Road,
Sonipat-131001, (Delhi NCR), Haryana, India



jindalglobaluni



jindalglobaluni



jindalglobaluni



jindalglobaluni



jguvideo

JGU - An Initiative of Jindal Steel & Power Foundation

www.jgu.edu.in

**RANKED NUMBER 1 PRIVATE UNIVERSITY
IN INDIA, BY**

TOP 700
UNIVERSITIES GLOBALLY



Quacquarelli Symonds (QS)

**WORLD
UNIVERSITY
RANKINGS**
2023 Edition

INDIA'S NO.1
UNIVERSITIES IN SOCIAL SCIENCES,
ART & HUMANITIES

Cover Flap (Front side)

PROSPECTUS

DOCTORAL PROGRAMME

APPLY



LOCATE



DETAILS



SOCIAL

-  [jindalglobaluni](#)
-  [jindalglobaluni](#)
-  [jindalglobaluni](#)
-  [jindalglobaluni](#)
-  [jguvideo](#)

WEB

jgu.edu.in

Cover Flap (Back side)