



O.P. JINDAL GLOBAL
INSTITUTION OF EMINENCE DEEMED TO BE
UNIVERSITY
A Private University Promoting Public Service



**JINDAL INSTITUTE OF
BEHAVIOURAL SCIENCES**



POSTGRADUATE PROGRAMMES@JIBS



M.A./M.Sc. APPLIED PSYCHOLOGY

CHILD PSYCHOLOGY

FORENSIC AND INVESTIGATIVE PSYCHOLOGY

INDUSTRIAL AND ORGANIZATIONAL PSYCHOLOGY

SPORTS PSYCHOLOGY

M.Sc. PSYCHO-SOCIAL REHABILITATION

(RCI Licensed Programme)

 <https://admissions.jgu.edu.in>

www.jgu.edu.in

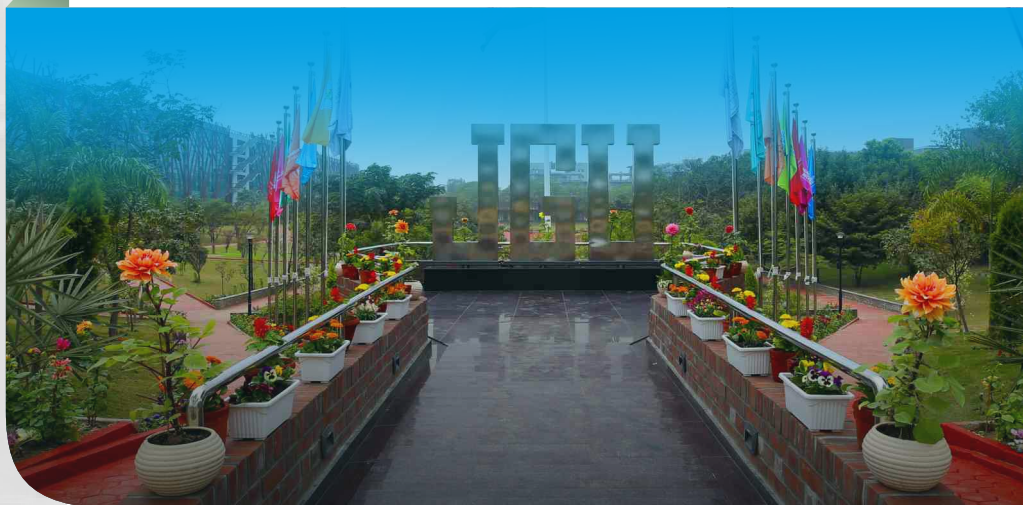


O.P. Jindal Global University (JGU) is a non-profit, multi-disciplinary and research oriented university founded in 2009. JGU was established as a philanthropic initiative of its Founding Chancellor, Mr. Naveen Jindal in memory of his father, Mr. O.P. Jindal.

JGU has 16,000+ students, 1100+ full-time faculty members, and 2900+ administrative staff in its fully residential campus. JGU's twelve schools focus on Law, Business & Management, International Affairs, Public Policy, Liberal Arts & Humanities, Journalism, Design & Architecture, Banking & Finance, Environment & Sustainability, Psychology & Counselling, Languages & Literature and Public Health & Human Development. Over the last decade, JGU has grown into an institution that brings full-time faculty from 50+ countries in the world, students from 100+ countries and has collaborated with 575+ leading institutions in 80+ countries which makes the learning experience truly international.

JGU is ranked Number 1 in the world with the highest overall score amongst all universities and awarded 'Gold' by the Times Higher Education (THE) Online Learning Rankings 2024. JGU has been ranked as India's Number 1 Private University for three years in a row by the prestigious QS World University Rankings 2023. JGU has been recognised among the Top 150 universities globally under the age of 50 years by the QS Young University Rankings. JGU has also been recognised in the Top 500 Universities as per the QS Graduate Employability Rankings 2022.

The Jindal Global Law School, has retained its number one rank in India for six consecutive years and remains the only Indian law school listed in the Global Top 100 by the QS World University Rankings by Subject 2025. Furthermore, JGU holds the distinction of being India's top private university for Arts & Humanities and Politics & International Studies (within the Top 201-250 globally). It ranks among the top two private universities in India for Economics & Econometrics, among the top three private universities in India (Top 274 in the world) for Social Sciences & Management, and among the top six private universities in India for Business & Management Studies (Top 500 in the world) as per the QS World University Rankings by Subject 2025. In 2020, JGU was recognised as an 'Institution of Eminence' by the Ministry of Education, Government of India.



MESSAGES FROM THE LEADERSHIP



Welcome to the O.P. Jindal Global University – A Private University Promoting Public Service. The University has consistently affirmed the ideas of interdisciplinary education, diversity, inclusivity, and excellence in our pursuit of knowledge. It is my pleasure to share with you that JGU has been designated as an 'Institution of Eminence (IoE)' in 2019 by Government of India. JGU has received several prestigious global recognitions, including being ranked India's No. 1 private university for three consecutive years by the QS World University Rankings (2023). It also ranks among the top 150 young universities globally (QS Young University Rankings). This journey has seen JGU expand over twelve Schools and four Institutes. One of these Institutes, Jindal Institute of Behavioural Sciences has established a strong foundation of behavioural science research and teaching at JGU. I am delighted to invite you to be part of the institute's commitment to educating young thought leaders through their post-graduate programmes.

Prof. (Dr.) C. Raj Kumar

Founding Vice Chancellor,
O.P. Jindal Global University



Welcome to the Jindal Institute of Behavioural Sciences (JIBS), an emerging institution of excellence in research, academics, and capacity building in the domain of behavioural sciences. Since its inception in 2014, JIBS has successfully attained several coveted milestones and generated meaningful community impact. At JIBS, we nurture a vibrant academic and research culture and seek to leverage the university's internationally accomplished faculty and innovative interdisciplinary curriculum. JIBS faculty are thought leaders in areas that matter and impact the dynamic world of human behaviour and cognition. Our pedagogy, research, and capacity-building efforts are characterised by a strong commitment to reimagine contemporary challenges and solutions and push the boundaries of excellence. I invite you to be a part of the ongoing legacy of JIBS, and contribute to this vibrant community of scholars.

Prof. (Dr.) Pulkit Khanna

Dean, Jindal Institute of Behavioural Sciences,
O. P. Jindal Global University

PG PROGRAMMES

M.A./M.Sc. APPLIED PSYCHOLOGY

Choose one out of four

SPECIALISATIONS:

- CHILD PSYCHOLOGY
- FORENSIC AND INVESTIGATIVE PSYCHOLOGY
- INDUSTRIAL AND ORGANIZATIONAL PSYCHOLOGY
- SPORTS PSYCHOLOGY

M.Sc. PSYCHO-SOCIAL REHABILITATION

(RCI Licensed Programme)

RESEARCH



CENTRE FOR VICTIMOLOGY & PSYCHOLOGICAL STUDIES (CVPS)



CENTRE FOR LEADERSHIP AND CHANGE (CLC)



CENTRE FOR COMMUNITY MENTAL HEALTH (CCMH)



CENTRE FOR CRIMINOLOGY AND FORENSIC STUDIES (CCFS)



AWARENESS FOR COMMUNITY TRANSFORMATION (ACT) CLINIC

LABORATORIES @ JGU

BRAIN BEHAVIOUR LABORATORY
FORENSIC SCIENCE LABORATORY
FINANCIAL CRIMES STUDIES LABORATORY
REHABILITATION CENTRE
PSYCHOLOGY RESEARCH LABORATORY

RESEARCH PORTFOLIO

24

Books

77

Book Chapters

193

Journal Articles

26

Completed Projects

PROFESSIONAL DEVELOPMENT PROGRAMMES

3300+

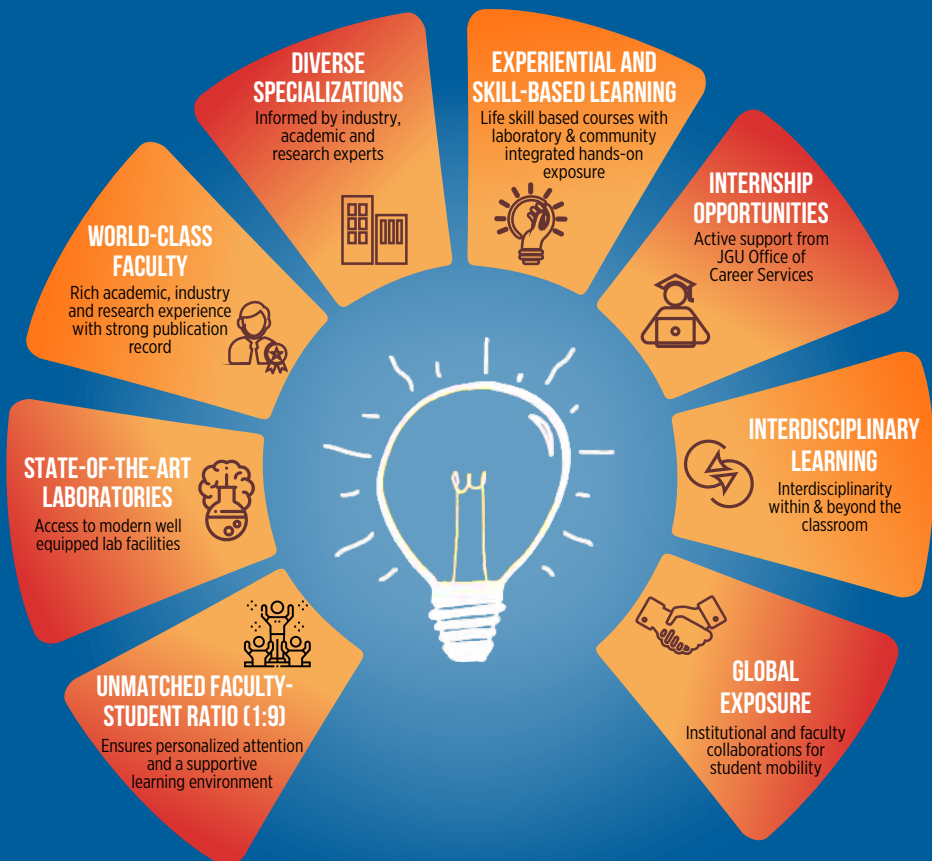
Training Sessions

2,77,500+

Professionals & Educators Trained

Why Enroll @ JIBS

Jindal Institute of Behavioural Sciences (JIBS) is a research-led, future-oriented institution focused on developing a new generation of thought leaders and practitioners in the fields of Psychology and Rehabilitation.



ACHIEVEMENTS & MILESTONES

Highlights from 2024-25



JIBS proudly reached a milestone of 22 Ph.D. graduates in 2025

Graduation of the Second Batch of M.A./M.Sc. Applied Psychology

Graduation of the Inaugural Batch of M.Sc. Psycho-Social Rehabilitation



Multiple Grants and Accolades for Team JIBS

Research Grant by the Society for the Psychological Study of Social Issues (SPSSI)

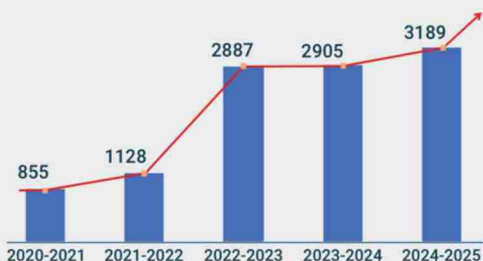
Research Grant by the Society for Personality and Social Psychology (SPS)

Research Grant by Solution Focused Brief Therapy Association (SFBTA)

International Fellowship of Restorative Justice Practitioners by Restorative Justice 4 All, United Kingdom

STAR Scholars Network
Presidential Medal of Service & Excellence

JIBS Cross-Elective Courses: A Student Favourite!



Total Students Enrolled in Cross-Registered Electives (Last 5 Years)

International Events Hosted by JIBS (2024-2025)

- The 13th International Conference on Victim Assistance (ICVA) - 11th - 12th November 2024
100+ delegates across 10 countries and 30+ paper presentations



- JIBS hosted the **World Conference on Criminology (WCC) 2025** in association with the International Society for Criminology, Paris from 19th – 22nd June 2025
1000+ presenting authors, 100+ parallel paper sessions, 750+ participants, 40+ international speakers, and representatives from over 25 countries



- **World Mental Health Day Seminar 2025** on the theme: “**Community Mental Health: Pathways to Care**” featured multi-stakeholder engagement bringing together global experts, community practitioners, and students reflecting shared commitment in fostering dialogue and action in the field of mental health.

Academic Engagements & Experiential Learning

- **40+ Master Classes** with Leading Industry Experts
- **10+ Research Dialogues** connecting the shared research expertise of faculty and students
- Our faculty serve as peer reviewers for **45+ Journals**



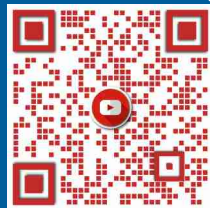
Our Global & Digital Footprint

JIBS Infotainment: From Screen to Stream

6 million+
views

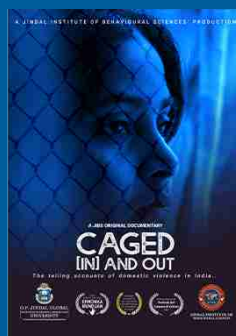
35K
subscribers

250+
videos



30+ Expert Features by JIBS faculty across Indian Express, CNN News18, The Wire, ABP News, and JIBS Infotainment

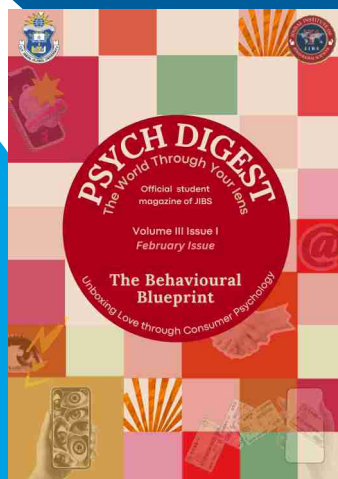
Our in-house long form documentary films have been showcased at major international film festivals across continents in countries like Malaysia, Spain, India, Italy, China, the USA, and Nigeria.



Psych Digest: The World Through Your Lens

A JIBS student-led e-magazine that aims to make psychology relevant, relatable, and accessible

Launched in February 2023, the quarterly e-magazine has rolled out 10 issues to date



INTERNSHIPS

@ JIBS

Supported by the Office of Career Services, students at JIBS can explore diverse internship opportunities that are designed to provide industry insights and 21st century skills, helping them build meaningful careers

M.A./M.Sc. APPLIED PSYCHOLOGY

155+
INTERNSHIP
PARTNERS ACROSS

10+
CITIES

INTERNATIONAL
INTERNSHIP
OPPORTUNITIES

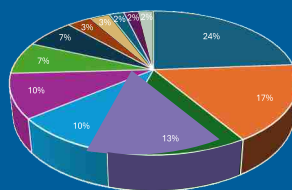
UNITED NATIONS
INSTITUTE FOR
TRAINING & RESEARCH
SWITZERLAND

INTERNATIONAL
COUNCIL OF
PSYCHOLOGISTS,
THE UNITED NATIONS

KEY INTERNSHIP PARTNERS



SECTOR-WISE INTERNSHIP PLACEMENT



- Corporate & Finance (24%)
- Social-welfare Organizations (17%)
- Mental Health Services (13%)
- Hospitals & Medical Institutions (10%)
- Education & Training (7%)
- Government Institutions (7%)
- Power, IT & Telecommunications (7%)
- Media & Entertainment (3%)
- Research Assistantship (3%)
- Hospitality (2%)
- Biotech & Pharma (2%)
- Others (2%)

M.Sc. PSYCHO-SOCIAL REHABILITATION (MPSR)

[Rehabilitation Council of India (RCI) licensed Course]

25+
INTERNSHIP
PARTNERS
ACROSS

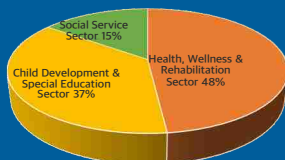
15
CITIES



INTERNATIONAL
INTERNSHIP
OPPORTUNITY
AT TREEHOUSE
THAILAND

TRAINING AND
INTERNSHIPS AT
HEALTHCARE FACILITIES
ACROSS 22 DISTRICTS
IN HARYANA

SECTOR-WISE INTERNSHIP PLACEMENT



KEY INTERNSHIP PARTNERS



By connecting students with leading organizations, JGU offers opportunities that align with their skills and aspirations to launch their career.

PLACEMENT HIGHLIGHTS

2024 RECRUITERS

9

2025 RECRUITERS

22



10.2 LPA

**HIGHEST SALARY
OFFERED**



6.86 LPA

AVERAGE SALARY



**4 (AMONGST 6) STUDENTS QUALIFIED
THE FORENSIC APTITUDE & CALIBER TEST (FACT)**

PROMINENT RECRUITERS

phia
building thriving communities



**QUEST
ALLIANCE**

policybazaar com

PMaps



Grant Thornton

Rocket Health

KPMG

thomas

AAJ
Optimizing supply chains

BRANDCOMPR
A UNIT OF MADISON WORLD

Deloitte

mavenmagnet

TopHire



YASH
Technologies
More than what you think.

**ALIENS
GROUP**
"INTELLIGENT LIVING"

**O.P. JINDAL GLOBAL
UNIVERSITY**
A Private University Promoting Public Service

M.A./M.Sc. APPLIED PSYCHOLOGY

Overview of the Curriculum

To graduate, a student must complete the following:

- A minimum of 100 credits which includes a combination of core courses, electives, dissertation, and internships
- 3 mandatory internships during summer/ winter break (2 Credits)
- A dissertation worth 8 credits by the end of Year 2
- **Specialization electives worth 6 credits - Electives can be opted from Semester 2 to Semester 4 (refer to Semester 4 for select course offerings)**

YEAR 1

Comprising foundational and core curriculum to facilitate all students from different disciplinary backgrounds

SEMESTER 1	CREDITS (28)
Foundations of Applied Psychology: History and Systems	4
Developmental Psychology	4
Social Psychology	4
Research Methods I	4
Academic Writing	4
Statistics I	4
Internship I	2
Practicum I	2
SEMESTER 2	CREDITS (24)
Cognitive Psychology	4
Psychology of Mental Health	4
Personality	4
Research Methods II	4
Statistics II	4
Internship II	2
Practicum II	2

Specialization details are explained on pages 12, 13, 14 and 15
Students may change Specializations up to one time till end of Semester 2

Child Psychology

The specialization is designed to equip students with advanced knowledge and practical skills in the field of child psychology. This comprehensive programme is tailored for individuals seeking to specialize in understanding and supporting the psychological development, well-being, and mental health of children and adolescents. It includes applied and theoretical aspects such as learning about intervention strategies, ethical and legal consideration while working with children, assessment and diagnosis, and conducting research on the population. The course would help individuals gain skills to become competent psychologists, school counselors, or researchers in child and adolescent studies area. Students will be able to address the unique challenges and contribute to the well-being of children in their most important years. Students will gain the capacity to comprehend and effectively plan interventions employing cognitive and emotional learning techniques.

YEAR 2

SEMESTER 3		CREDITS (24)
Psychosocial Emotional Development of Children		4
Parent-Child Relationship		4
School Wellness Education		4
Trauma and Resilience in Childhood and Adolescence		4
Empowering Children and Adolescents with Disabilities through Support and Rehabilitation		4
Internship III*		2
Practicum I		2
SEMESTER 4		CREDITS (18)
Comprehensive Strategies in Early Interventions		4
Psychotherapeutic Interventions		4
Cross Elective I** (Child Sexual Abuse and the Law, Building Resilience, Brief Problem-Solving Counselling for Youth, Psychology of Loss)		-
Cross Elective II** (Feminist Ethnographies, Personal Development and Self-Care through Arts, Psychological First Aid: Skills to Help Self and Others, Feminist Perspectives and Theories in Childhood Research)		-
Practicum II		2
Dissertation		8

* To be completed during intervening semester break.

** This is a non-exhaustive list. The above information including the availability of electives mentioned will be subject to periodic review, availability, and change. Students can enroll after semester 1 at their own pace., with credits varying between 2, 3, and 4.

Forensic and Investigative Psychology

The main aim of this advanced course in Forensic & Investigative Psychology is to provide a comprehensive understanding of the aetiology of criminal and investigative behaviour from a psychological perspective. By combining psychological theory, clinical practice, research-led teaching and hands-on laboratory experience, the programme introduces students to various aspects of the intersection of psychology and law. The curriculum is designed to meet the current issues in crime and justice and prepare students to address them from an interdisciplinary depth. Experts in criminal psychology, forensic sciences and criminology will offer lectures, discussions and debates around some pertinent modules.

YEAR 2

SEMESTER 3	CREDITS (24)
Applied Forensics in Criminal Justice System	4
Rehabilitation and Correctional Psychology	4
Fundamentals of Criminal Behaviour	4
Advanced Psychology in Criminal Investigation	4
Legal Aspects of Crime Science	4
Internship III*	2
Practicum I	2

SEMESTER 4	CREDITS (18)
Neuropsychology of Criminal Behaviour	4
Cyber Psychology	4
Cross Elective I** (Psychology of White-Collar Criminals, Terrorism and Organised Crime, Investigative Psychology in Complex Crimes, Conservation Psychology)	-
Cross Elective II** (Forensics and Police Administration, Fraud Examination, Gender Based Violence and Intervention)	-
Practicum II	2
Dissertation	8

* To be completed during intervening semester break.

** This is a non-exhaustive list. The above information including the availability of electives mentioned will be subject to periodic review, availability, and change. Students can enroll after semester 1 at their own pace., with credits varying between 2, 3, and 4.

Industrial and Organizational Psychology

The industrial and organizational psychology specialization provides specialist knowledge and hands-on skill to assess individual, group, and organizational dynamics in the workplace and apply psychological principles and theories to workplace settings to improve organizational performance while also enhancing employee well-being. This specialization equips learners with the ability to research and offer solutions to acquire, appraise, develop, engage and retain talent better. The wide range of learner-centric pedagogies coupled with the vast industry experience of faculty ensures effective actionable learning. The industry-aligned curriculum prepares the graduates to contribute to their respective roles from day one.

YEAR 2

SEMESTER 3		CREDITS (24)
Acquiring Talent Effectively		4
Managing People and Performance		4
Leveraging Learning for Talent Development		4
Organizational Behaviour and Design		4
Decoding Workplace Team Dynamics		4
Internship III*		2
Practicum I		2
SEMESTER 4		CREDITS (18)
Compensation and Benefits		4
Industrial & Labour Relations		4
Cross Elective I** (Employee Engagement, Cross-cultural Management, People Analytics, Developing and Implementing Competency Models and Assessment Centres and Consulting and Project Management)	-	
Cross Elective II** (Innovation at Workplace, Occupational Health and Safety, Learning Organizations, Quality of Work Life, Employee Well-Being and Stress Management)	-	
Practicum II		2
Dissertation		8

* To be completed during intervening semester break.

** This is a non-exhaustive list. The above information including the availability of electives mentioned will be subject to periodic review, availability, and change. Students can enroll after semester I at their own pace., with credits varying between 2, 3, and 4.

Sports Psychology

The sports psychology curriculum at JIBS is an intensive and specialized one designed for individuals who are passionate about the intersection of psychology and sports. This programme offers advanced training to equip students with the knowledge and practical skills necessary to excel in the dynamic field of sports psychology. It offers a wide range of application-based modules covering aspects such as mental skills training, visualization, goal setting, relaxation, understanding team dynamics and leadership, and interventions to improve athlete performance. This programme is ideal for individuals who want to work with sports players, improve performance, and build a career around sports.

YEAR 2

SEMESTER 3		CREDITS (24)
Introduction to Sports Psychology		4
Social Psychology of Sports		4
Performance Excellence and Career in Sports		4
Physiology & Sports Sciences		4
Law, Ethics & Mental Health in Sports		4
Internship III*		2
Practicum I		2
SEMESTER 4		CREDITS (18)
Sports Injury Management & Recovery		4
Interventions for Improving Sports Performance		4
Cross Elective I** (Sports Dispute Resolution, Introduction to Modern Sports Law Business and Policy, Sports and International Relations)		-
Cross Elective II** (Health, Sports and Society, Secret of the Winning Mind: Lessons from Sports Psychology)		-
Practicum II		2
Dissertation		8

* To be completed during intervening semester break.

** This is a non-exhaustive list. The above information including the availability of electives mentioned will be subject to periodic review, availability, and change. Students can enroll after semester 1 at their own pace., with credits varying between 2, 3, and 4.

Rehabilitation Council of India (RCI) Licensed

M.Sc. PSYCHO-SOCIAL REHABILITATION

The 'M.Sc. Psycho-Social Rehabilitation' is a specialized degree programme focusing on understanding disability due to mental health conditions and facilitating the recovery of the affected individuals. This programme aims to provide a comprehensive understanding of mental health conditions (including mental illness, intellectual and developmental disabilities, and Psycho-social concerns of special groups) and skills needed to facilitate mental health rehabilitation. The course work will combine lectures, discussions, application exercises in simulated environments, and clinical/fieldwork. Graduates of the programme may work in various settings, including hospitals, clinics, community health centers, and government or in the mental health or social sector.

Overview of the Curriculum

To graduate, a student must complete the following:

- A minimum of 117 credits over two years
- Practicum-intensive course with clinical/fieldwork hours and internships as per RCI norms
- Dissertation to be submitted at the end of two years
- Students can take JGU wide cross-registered electives

YEAR 1

SEMESTER 1		CREDITS (33)
Health and Mental Health I		4
Psychosocial Foundations of Human Behaviour I		4
Psychosocial Rehabilitation I		4
Research Methods I		4
Academic Writing		4
Practicum I		4
Internship		9

SEMESTER 2		CREDITS (29)
Health and Mental Health II		4
Psychosocial Foundations of Human Behaviour II		4
Psychosocial Rehabilitation II		4
Research Methods II		4
Practicum II		4
Internship		9

Psycho-Social Rehabilitation

[RCI Licensed Programme]

YEAR 2







SEMESTER 3	CREDITS (31)
Psychological Counselling I	4
Family, Group, Community Intervention I	4
Psychosocial Counselling for Special Groups I	4
Rehabilitation Administration and Legislation I	4
Practicum III	6
Internship	9
SEMESTER 4	CREDITS (24)
Psychological Counselling II	4
Family, Group, Community Intervention II	4
Psychosocial Counselling for Special Groups II	4
Rehabilitation Administration and Legislation II	4
Dissertation	8

FIELD WORK / CLINICAL WORK / INTERNSHIP EACH SEMESTER



SELECT CAREER PATHWAYS



COURSES \ SECTOR	 RESEARCH	 HEALTHCARE	 INDUSTRY/ ORGANIZATION	 SOCIAL WORK SECTOR	 EDUCATION	 ASSESSMENT/ INVESTIGATION
M.A/M.Sc. APPLIED PSYCHOLOGY	Research Associate/ Analyst	Healthcare Researcher	Behaviour Analyst & Human Resource Personnel	Programme Officers/ Welfare Officers	Professional in School/ Higher Educational Institute	Criminal Profiling Investigator
	Doctoral Studies		Business Development & Management Consultant			Forensic Professional
	Project & Field Work Expert		Sports Psychology Consultant			Sports Talent Development Analyst
M.Sc. PSYCHO-SOCIAL REHABILITATION	Independent Research Projects	Rehabilitation Psychologist	Project Manager	Programme Officer in Rehabilitation Sector	Professional in School/ Higher Educational Institute	Psychometrists
	Doctoral Studies	Project Coordinator	Disability Right Consultant	Community Mental Health Care Professional	Consultant for Inclusion/ Disability Support Services	
	Research Associates					



Hear it from our students

Madhuri Nair

M.Sc. Psycho-Social Rehabilitation, 2024-26



“

To me, JIBS is more than an institution, it's a journey of self-discovery, where every challenge has shaped me into someone stronger, more open, and more whole. ”

Anoushka Nair

M.A./M.Sc. Applied Psychology, 2024-2026



“

JIBS has been transformative — combining academic rigor with real-world exposure through research, fieldwork, and community engagement. It has given me mentorship, hands-on learning, and the confidence to apply psychology meaningfully in practice. ”

Stuti Nair

M.A./M.Sc. Applied Psychology, 2024-26



“

I have gained in-depth knowledge and hands-on experience in Forensic Psychology. This programme has provided me with rigorous academic training and practical exposure, enabling me to critically analyze and contribute meaningfully to the intersection of psychology and the justice system. ”

Yashi Agarwal

M.A./M.Sc. Applied Psychology, 2024-2026



“

JIBS has not only given me the academic rigour that I needed, but also a system that believes in learning beyond textbooks, through conversations, experiences and a close knit community that feels like home. ”

Prakriti Gupta

M.A./M.Sc. Applied Psychology, 2024-2026



“

JIBS has been an exciting journey. With state-of-the-art labs, supportive faculty, and interactive learning beyond traditional classroom settings, every class and course engaging and inspiring. It's truly a place where learning comes with experience. ”

Garima Paul

M.A./M.Sc. Applied Psychology, 2025-27



“

I really enjoy how engaging my classes are and the way our professors teach with so much clarity. JGU truly has a unique vibe that makes learning inspiring and exciting! ”

Palak Surana

M.A./M.Sc. Applied Psychology, 2025-27



“

My experience at JGU, especially in Jindal Institute of Behavioural Sciences (JIBS) has been truly enriching. For me, JIBS has been a space where I discovered my voice, refined my research skills, and felt deeply supported by the faculty members in my professional and personal life. ”

Adithya Kiron

M.A./M.Sc. Applied Psychology, 2025-27



“

JIBS has offered me the right environment to learn and grow with their resources such as the community mental health research centre, fully equipped labs, student initiated advocacy clinics, zines, and faculties that gives you the right amount of push to pursue what you love. ”

STUDENT DIVERSITY @ JIBS

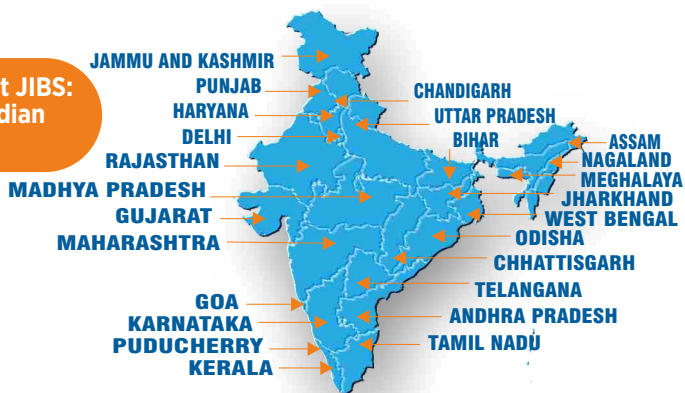
CELEBRATING

At JIBS, diversity isn't just celebrated; it is a way of life, creating a welcoming home for all.

Our vibrant student body and PhD scholars embody this diversity, with students hailing from across the country as well as from outside India, showcasing our multicultural environment.

Each student is carefully selected after a rigorous interview process, bringing a rich blend of cultures, languages, and experiences that make our learning environment inclusive and dynamic.

Regional Diversity at JIBS: Students from 25 Indian States & UTs



JIBS PhD Scholars: A Global and Diverse Community*

**PhD students enrolled since 2016.*

This is your opportunity to join the vibrant academic community at JIBS, nestled within the global JGU ecosystem. We look forward to welcoming you!

STUDY ABROAD OPPORTUNITIES

For JIBS STUDENTS

JIBS offers a range of international opportunities to facilitate personal growth, global networking and cultural immersion – key ingredients for the contemporary job market.

OUR PARTNER UNIVERSITIES



SUMMER & WINTER SCHOOLS

Enhance your educational experience by attending short-term summer and winter schools in collaboration with leading universities worldwide. These programmes are designed to offer intensive courses, workshops, and cultural experiences that broaden students' academic horizons and global understanding.

Recent Summer & Winter Schools Attended by Our Students



Jindal UNITAR Winter School at the United Nations Institute for Training and Research, Geneva, Switzerland

Jindal Oxford Programme on European History, Politics and Art' (EHPA) at St. Peter's College, University of Oxford, UK

Business, Entrepreneurship and Finance Programme at Lubin School of Business, Pace University, USA.

Join us at JIBS and take your education beyond borders!

INTERNATIONAL ACADEMIC COLLABORATIONS

	 UNIVERSITY OF BIRMINGHAM	 University of Essex	 NTU NOTTINGHAM TRENT UNIVERSITY	 UNIVERSITY OF LEEDS
 QUEEN'S UNIVERSITY BELFAST	 Queen Mary University of London	 Australian National University	 UNIVERSIDAD DE GRANADA	 CityU 香港城市大學 City University of Hong Kong
 MACQUARIE University SYDNEY AUSTRALIA	 PRCV	 Brunel University London	 LA TROBE UNIVERSITY	 Carleton UNIVERSITY
	 KOC UNIVERSITY	 WESTERN SYDNEY UNIVERSITY	 KU THE UNIVERSITY OF KANSAS	 INDIANA UNIVERSITY BLOOMINGTON
	 Sacred Heart UNIVERSITY	 FORDHAM UNIVERSITY THE FORD UNIVERSITY OF NEW YORK	 PACE UNIVERSITY	 Quinnipiac UNIVERSITY
 Murdoch UNIVERSITY		 DEAKIN UNIVERSITY	 BIRMINGHAM CITY University	
 BOND UNIVERSITY	 KU LEUVEN	 NATIONAL CHENGCHIEH UNIVERSITY	 PEPPERDINE UNIVERSITY	 UC DAVIS UNIVERSITY OF CALIFORNIA
	 THE UNIVERSITY OF QUEENSLAND AUSTRALIA	 National Taiwan University	 BAU Baluchepur University	
 université de BORDEAUX	 Maynooth University National University of Ireland Maynooth	 University of Zurich	 UNIVERSITY OF SOUTHERN DENMARK	 THE UNIVERSITY OF NEWCASTLE AUSTRALIA
 UNISA university of south africa	 University of Cyprus	 ISTANBUL GELİŞİM ÜNİVERSİTESİ	 MONTGOMERY COLLEGE	 Universiteit Leiden
 MONASH University	 SAPIENZA UNIVERSITÀ DI ROMA	 UH		

OUR PARTNER INSTITUTIONS

JGU is proud to collaborate with these organisations for advancement of research, internship, training, and placement opportunities for our students.

NATIONAL



INTERNATIONAL



OUR FACULTY



PROF. (DR.) PULKIT KHANNA

Ph.D. (IIT Delhi)
Professor & Dean



PROF. (DR.) MOHITA JUNNARKAR

Ph.D. (IIT Bombay)
Professor & Vice Dean (Research)



DR. CAROLINE AGBOOLA

Ph.D. (University of South Africa,
South Africa)
Professor & Deputy Director (CCFS)



PROF. MANEKA NAIR SASTHARAM

LL.M. (University of Cambridge, U.K.)
Associate Professor & Vice Dean
(Student Affairs)



DR. NEHA KHETRAPAL

Ph.D. (Macquarie University, Australia)
Associate Professor & Associate Dean
(International Collaborations)



DR. VIPIN VIJAY NAIR

Ph.D. (O.P. Jindal Global University)
Associate Professor & Chairperson,
JIBS Doctoral Committee,
Deputy Director (CVPS)



DR. FINITA ROY

Ph.D. (Bharathidasan University)
Associate Professor &
Deputy Director (CCMH)



DR. IRYNA SOROKA

Ph.D. (KROK University, Ukraine)
Associate Professor



DR. RAGLAND THOMAS GAMALIEL

Ph.D. (Swinburne University of Technology,
Australia)
Associate Professor of Practice &
Assistant Director (CLC)



DR. AASIM UR REHMAN GANIE

Ph.D. (NIMHANS)
Assistant Professor &
Assistant Director (CCMH)



DR. AMRITA ROY

Ph.D. (NIMHANS)
Assistant Professor



DR. ANGEL SELVARAJ

Ph.D. (Bharathidasan University)
Assistant Professor & Assistant Dean
(Admissions)



DR. ARCHITA DUTTA

Ph.D. (IIT Bombay)
Assistant Professor



DR. ASHISH AMAN SINHA

Ph.D. (IIT Dhanbad)
Assistant Professor &
Assistant Director (CLC)



BHAVYA TANDON

LL.M (University of Edinburgh, U.K.)
Assistant Professor &
Assistant Dean (ACT)



DR. GIRRAJ SHARMA

Ph.D. (Dr. Harisingh Gour
Vishwavidyalaya, Sagar)
Assistant Professor &
Assistant Director (CCFS)



DR. IRFAN FAYAZ

Ph.D. (O.P. Jindal Global University)
Assistant Professor



DR. JAYA SHUKLA

Ph.D. (IIT Roorkee)
Assistant Professor



DR. POOJA PATNAIK

Ph.D. (IIT Kharagpur)
Assistant Professor &
Deputy Director (CLC)



DR. SHANKEY VERMA

Ph.D. (O.P. Jindal Global University)
Assistant Professor

OUR FACULTY



DR. SHILPA BANDHOPADHYAY

Ph.D. (IIT Delhi)
Assistant Professor & Associate Dean
(Capacity Building and Outreach)



DR. SOUMYA THANKAM VARGHESE

Ph.D. (Vellore Institute of Technology, Vellore)
Assistant Professor



DR. SUDIPT KUMAR

Ph.D. (IIT Kharagpur)
Assistant Professor, Assistant Dean
(Internships & Placements)



DR. SULBHA RAI

Ph.D., (Guru Gobind Singh Indraprastha
University, New Delhi)
Assistant Professor



DR. VASUNDHARA S NAIR

Ph.D. (NIMHANS)
Assistant Professor &
Assistant Dean (Academic Affairs)



DR. VERNON DMELLO

Ph.D. (IIT Guwahati)
Assistant Professor



HANAN ZAFFAR

M.A. (MCRC, Jamia Millia Islamia)
Assistant Professor of Practice



SONIA RANI L.

Master in Rehabilitation Science
(Bharathidasan University)
Lecturer, Special Educator &
Assistant Director (CCMH)



DR. DAHUNLYNE SHYLLA

Ph.D. (NIMHANS)
Lecturer



DR. KAVERI GUPTA

Ph.D. (Jamia Millia Islamia, New Delhi)
Lecturer



DR. LAKSHEETTA CHOUDHARY

Ph.D. (Sardar Patel University of Police,
Security and Criminal Justice)
Lecturer & Assistant Director (CVPS)



GEETANJALI DHANKAR

LL.M. (NALSAR);
M.A. (Soka University, Japan)
Lecturer



INDUPRIYA

Ph.D. Candidate (IIT- Delhi and
University of Queensland Joint PhD)
Lecturer



MARIA ZAFFAR

PhD Candidate (IIT Delhi)
Lecturer, JIBS, JGU



RAAVI MASTA

Ph.D. Candidate (IIM, Lucknow)
Lecturer



DR. DIVYA DUBEY

Ph.D. (Amity University, Noida)
Assistant Lecturer &
Assistant Director (CVPS)



KRITIKA SWAMI

LL.M. (TISS Mumbai)
Assistant Lecturer



SAMIKSHA DAS

Ph.D. Candidate (JGU, Sonipat)
Assistant Lecturer &
Assistant Director (CCFS)



NIVEDITA SALAR

M.Sc. (Erasmus University, Netherlands)
Research Fellow



AMENITIES & FACILITIES

University hall of residence for students consists of several blocks of buildings designed by a French Architect.

University has:

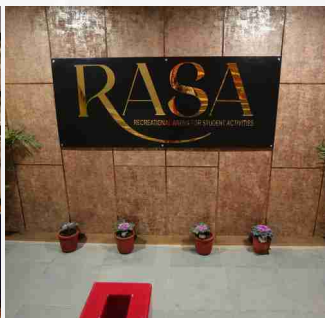
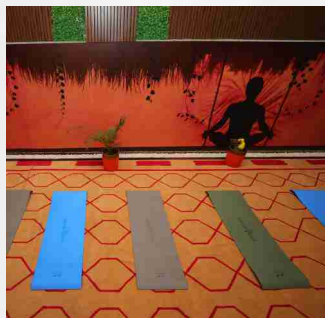
- 24x7 health center with medical officer.
- Center for wellness and counselling.
- Washex hospitality solutions.
- 24x7 Security.
- State of the art sports facility includes badminton, tennis, basketball courts, cricket ground, football, volleyball, swimming pool, indoor games, gymnasium, yoga & aerobics.
- Multi-cuisine dinning facility.
- Fully functional branch of ICICI bank with ATMs (ICICI bank and others) on several locations.
- Post office extension/courier office.



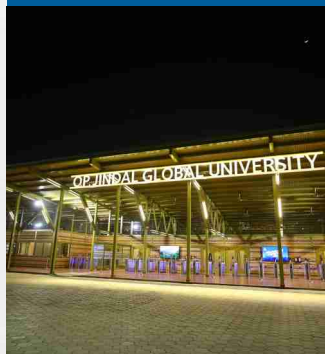
A world class food court - Outlets at this food court provide multi-cuisine options through brands such as Baskin Robins, Dominos, Subway, Bercos, Moti Mahal, Chaayos, Malgaadi Dhaba, Oki Poki, Dunkin Donuts, Nirula's, Bikanervala, Mahabelly etc.

OTHER FACILITIES

APOLLO PHARMACY	AMUL ICE CREAM PARLOUR	CAFÉ COFFEE DAY TUCK SHOP
JUICE & MORE TUCK SHOP	CHAI TAPRI	TRIN BEAUTY SALON
STARBUCKS	CONVENIENCE STORE	REPROGRAPHIC CENTRE
NESTLE TUCK SHOP	LOOKS TAILORING HOUSE	



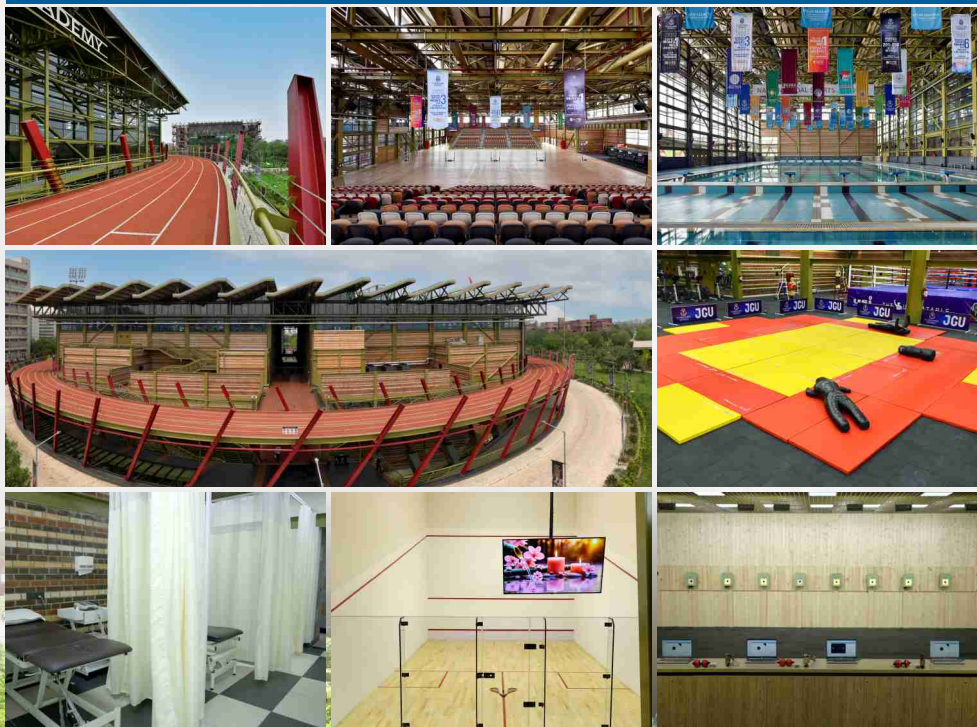
RECREATION ARENA FOR STUDENTS ACTIVITIES (RASA)



INDIA'S 1ST THE CONSTITUTION MUSEUM AND THE RIGHTS & FREEDOMS ACADEMY



NAVEEN JINDAL SPORTS ACADEMY



A STATE-OF-THE-ART ACADEMY FOR YOUR TRAINING & REHABILITATION



STUDENT CLUBS & SOCIETIES

DEBATE SOCIETY

The adrenaline rush at the sight of a podium, the sheer love for arguing, the camaraderie within a team, the passion to learn and win, and the innumerable stories embedded in our memories with every passing debate, is what the Jindal DebSoc promises to offer year after year. With a greater level of spontaneity in speeches and emphasis on matter and the skill of fleshing out arguments over manner, the Jindal DebSoc provides a platform to find safe place on campus.

JGU MODEL UNITED NATIONS

A Model United Nations conference is a simulation of the proceedings that take place at the headquarters of the United Nations in New York, USA. It is an internationally recognized activity, and regarded as a form of enriching JSIA students with experiences in public speaking and diplomacy. We seek to bring together participants to debate on pressing international issues, express views and intriguing ideas to tackle global conflicts and forge friendships along the way.

HUMAN RIGHTS SOCIETY

Human rights are the fundamental rights one has for survival and dignity. The Human Rights Society, over the years worked primarily through grassroots activism and spreading awareness about the systemic oppression faced by millions of people around the world. We've actively worked in areas of child labor and workers' rights.

We brought Renegades – a rock concert with a cause, Monkey Speak – a free speech magazine facilitated by students, Bal Adhikar Sabha – a round table conference on child rights, juvenile justice, Right to Education and advocacy for the rights of children with disabilities, research work on Right to Education and much more.

DIPLOMANIA SOCIETY

JSIA has established a unique academic initiative – Diplomania, which is the first International Relations Society of O.P. Jindal Global University. It focuses on opportunities and challenges in contemporary International Relations. Since its establishment in the year 2018, Diplomania has organised two successful International Youth Conclaves.

SOCIAL SERVICE SOCIETY

The Social Service Society, conceived in 2009, has come a long way since its inception. We have grown from having one programme teaching children of construction workers – to running numerous activities simultaneously, both on and off campus, open to all of the JGU students and faculty community. We are an open society that is committed to ensuring that as many people as possible can benefit from our privilege. Our initiatives include teaching children at the Balgram orphanage, the children of the Sodexo staff, and the children at the Rohat primary and secondary school. We also help the members of the Tulip labor colonies with their problems, and the members of the Rohat village with issues relating to governance.

JGU BOOK CLUB

The JGU Book Club was founded in the year 2014 by Prof. Nisha Nair, and has evolved to be a part of the Literary and Fine Arts Society at O.P. Jindal Global University. It is an exclusive club that promotes love for reading, literature, and creative expression. The club holds periodic book discussions, Author's talks, and panel discussions. In the year 2016, it received an award for 'The Most Promising Initiative' on the University Day. Over the years, the JGU Book Club has been a site of various cultural and literary events in the university. In 2017, the Book Club initiated JGU's first literary festival 'Sahityam'.



THE ENVIRONMENT SOCIETY

The Environment Society aims at making JGU, a green campus. We wish to initiate sustainable alternatives on campus to achieve our goal. In addition to that, we will be working towards creating a sense of awareness with respect to human impact on the environment and thereby change the attitude of students towards sustainability.



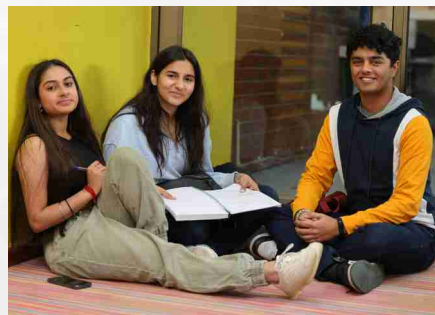
ACADEMIC WRITING SOCIETY

The Academic Writing Society (AWS) is established with the intention of promote quality academic writing amongst the students of JGU and to promote reform in the style of writing with a view to deliver publishable articles. The aim of AWS is to serve as a bridge between the ideas of the students and channel them by providing assistance in both style and substance. AWS will have specific days in a month when guided response will be handed to students registered with the AWS. The primary objective of AWS is to promote dialogue among key issues and cater to the ideas of students with a view to deliver publishable material.



JGU SPORTS SOCIETY

The JGU Sports Society strives to inculcate a strong sporting spirit on campus. It works to promote the sporting culture and promote participation in various sports festivals throughout the country. The main objective of the society is facilitating sportspersons on campus to achieve their full potential and to provide a recreational outlet for all students that lays outside a classroom.



JGU THEATRE SOCIETY

The JGU Theatre Society strives to make a change. The society combines the creative ideas and abilities of all its members to achieve maximum efficiency. Theatre is one of the higher cultural activities that marks us as imaginative and creative.

APERTURE, JINDAL PHOTOGRAPHY & VISUAL ARTS SOCIETY

Welcome to The Jindal Photography and Visual Arts Society. With a new year, a new vision and the same drive and enthusiasm to promote participation and enjoyment of photography in a good humored, relaxed and supportive environment, JPVAS welcomes students of all ages and aptitude, with the society's current members including photographers from across a vast spectrum of ability, from amateurs to professionals. With an aim to help one another, learn more about photography by meeting and discussing the art with like-minded individuals, developing practical photographic skills and techniques, discussing composition and others through practical sessions and critique sessions the society believes in taking advantage of photographic opportunities as they arise and making a lesson out of them.



ADMISSION REQUIREMENTS & FEE STRUCTURE

Minimum Eligibility for Post Graduate Degree Programmes at JIBS

- Successful completion of Bachelor's degree with 50% marks in any stream from a recognized University in India or abroad.
Please note: Students with an International Bachelor's degree must submit an equivalency certificate from the Association of Indian Universities (AIU)
- For M.A./M.Sc. Applied Psychology Programme the choice of specialization will have to be made during the time of admission

Admission Criteria

Applicants for all postgraduate programmes at JIBS will be selected based on their performance in Jindal-PMAT and personal interaction.

Accepted Standardized Tests or Competitive Examinations

Jindal-PMAT (Psychology Masters Admissions Test)/ GRE (Graduate Record Examinations)/ GMAT (Graduate Management Admission Test)/ CAT (Common Admission Test)

Selection Process

Submission and shortlisting of application on the basis of Personal Statement.

Online written examination.

Personal Interview with the JGU Faculty over Video conferencing Platform

Application Fee	₹ 1,000/-		
Tuition Fee	₹ 3,50,000/-	Accommodation Charges	₹ 2,31,100/-
Other Allied Service Charges (Other services including but not limited to Food, Laundry, Security Services, House-keeping Charges, Electricity etc.)			₹ 1,24,900/-

*The programme fee and residential fee are subject to an annual increase of upto 10%.

**Fully refundable Security deposit of Rs. 50,000 shall be collected at the time of admission as per university rules.

Means cum merit scholarship available for deserving candidates

ADMISSION PROCEDURE

Applicants interested in any of these programmes can apply directly through our online admission form available at our website. Kindly scan QR code/ follow URL to visit our admissions page:

Scan the QR code to
visit admission page

OR



<https://admissions.jgu.edu.in>

EDUCATION LOANS

In case of education loans, you may consider the following options:



SCHOLARSHIPS

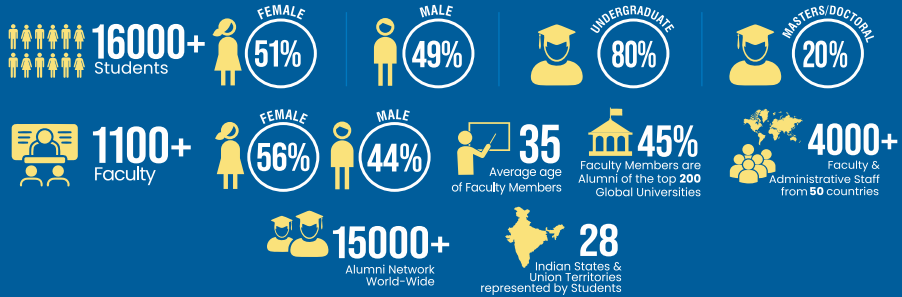
O.P. Jindal Global University awards Merit-cum-Means Scholarships (MCM). The MCM Scholarships covers the first year tuition fee only. Scholarships applications are opened by the University in July and will be awarded to eligible students in August 2026. The eligibility criteria includes Income proof of parents, entrance exam, graduation score and faculty interaction. Weightage will also be given to curricular and non & curricular achievements.

*Family ITR should not exceed INR 50 lakhs per annum in the latest returns.





JGU @ A GLANCE



12 SCHOOLS



50+ Programmes

30+ Undergraduate Programmes
20+ Postgraduate Programmes
Doctoral Programme



Jindal Global Law School
India's First Global Law School



JINDAL GLOBAL
BUSINESS SCHOOL
India's First Global Business School



Jindal School of International Affairs
India's First Global Policy School



Jindal School of Government
and Public Policy
India's First Policy Think Tank



Jindal School of
Liberal Arts & Humanities
India's First Interdisciplinary Research School



Jindal School of
Journalism & Communication
India's First Global Journalism School



Jindal School of
Design & Architecture
India's First Global Design School



JINDAL SCHOOL OF
BANKING & FINANCE
India's First Global Banking School



JINDAL SCHOOL OF
ENVIRONMENT & SUSTAINABILITY
India's First Global Sustainability School



Jindal School of
Psychology & Counselling
India's First Global Psychology School



JINDAL SCHOOL OF
LANGUAGES & LITERATURE
India's First Global Language School



JINDAL SCHOOL OF PUBLIC HEALTH &
HUMAN DEVELOPMENT
India's First Global Health School

RESEARCH

6 Research & capacity building institutes



8500+ Publications



65+ Interdisciplinary research centres



INTERNATIONAL COLLABORATIONS



575+ Collaborations with International Universities & Higher Education Institutions



10 Forms of Global Partnerships



80+ Countries & Regions



250+ Faculty & Student Exchange Collaborations



100+ Countries represented by Students

RANKINGS & RECOGNITIONS



CONFERRED THE STATUS OF AN
INSTITUTION OF EMINENCE
BY THE
MINISTRY OF EDUCATION
GOVERNMENT OF INDIA



WORLD
UNIVERSITY
RANKINGS
BY SUBJECT 2025



Times
Higher
Education

FOR ADMISSIONS CONTACT:

Ms. Moumita Behera
Junior Manager -
Admissions and Outreach
moumita.behera@jgu.edu.in
+91 7419595112
jibs.admission@jgu.edu.in

Ms. BABITA
Assistant Manager -
Admissions and Outreach
babita@jgu.edu.in
+91 7419748900

Mr. HARSH RANJAN SINHA
Dy. Director & Head of Admissions
hrsinha@jgu.edu.in
+91 7419748943

Scan the QR code to visit admission page



Sonipat-131001, (NCR of Delhi)



<https://admissions.jgu.edu.in>

www.jgu.edu.in

JGU – An Initiative of Jindal Foundation