

JINDAL INSTITUTE OF HARYANA STUDIES



WINTER ISSUE
2025



O.P. JINDAL GLOBAL
INSTITUTION OF EMINENCE DEEMED TO BE
UNIVERSITY
A Private University Promoting Public Service



NEWSLETTER
VOLUME 1

WHO WE ARE & WHAT WE DO

As a newly established institute at O.P. Jindal Global University, the Jindal Institute of Haryana Studies (JIHS) has been envisioned as a way of giving back to the state that houses us — by serving as a dedicated space for research, dialogue, and community engagement focused on Haryana's development.

We see ourselves as a bridge connecting knowledge with action, communities with policy, and local realities with long-term development goals. Under the leadership of Dr. Mrinalini Jha, we are building a space where meaningful conversations, grounded research, and collaborative partnerships can thrive.

Our work is shaped by four guiding pillars:

INSIGHT TO IMPACT

- We believe research should inform real change. Our efforts are directed toward producing knowledge that supports development action and policymaking across Haryana.

HOLISTIC DEVELOPMENT

- Equity, sustainability, and community well-being are central to our approach. We strive to understand and address Haryana's development in a connected and comprehensive way.

THOUGHT & ACTION LEADERSHIP

- We aim to be a lively hub of ideas — a place to think, question, discuss, and work together on the issues shaping Haryana's present and future.

GLOBAL OUTLOOK

- While grounded in Haryana, our learning and collaborations extend globally. We draw on diverse perspectives to strengthen the state's development journey.

As a growing and evolving centre, we are excited to learn, collaborate, and work closely with communities and partners — and we look forward to taking you along with us on this journey.

MESSAGE FROM THE DIRECTOR



PROF. (DR.) MRINALINI JHA

It is with great joy that we present the inaugural edition of the Jindal Institute of Haryana Studies (JIHS) Newsletter. This edition marks the beginning of a regular platform where we highlight our initiatives, insights, and collaborations across the state. Think of this as our first postcard — a small but enthusiastic update from a team eager to understand and contribute to Haryana's development story, and we promise not to crowd your inbox — just thoughtful, periodic updates worth your time.

Over the past months, our team has engaged deeply with Haryana's developmental, cultural, and ecological landscapes — from data-driven policy conversations to field research and heritage explorations. Each initiative has reminded us why this work matters, and how much more there is to learn.

We hope this newsletter offers a glimpse into our evolving journey and invites you to stay connected as we continue to learn, collaborate, and grow.

Warm regards,
Mrinalini

HIGHLIGHTS FROM THE LAST QUARTER

The past few months have witnessed JIHS organising a diverse and multifaceted set of events—each reflecting a unique dimension of the Institute's mission. From rigorous policy consultations and cultural immersions to public lectures and reflective academic dialogues, these initiatives have enriched the Institute's engagement with Haryana's developmental, social, and cultural landscape.

STAKEHOLDERS' CONSULTATION FOR THE SONIPAT HUMAN DEVELOPMENT REPORT

27 August 2025

JIHS hosted a full-day Stakeholder Consultation Meeting on the forthcoming Sonipat Human Development Report (HDR), bringing together experts from academia, government, civil society, development organisations, and media to identify district-level developmental priorities.

Thematic sessions on education, health, livelihoods, governance, spatial transformation, and environment generated rich inputs for strengthening the HDR. Participants highlighted the need for regional language versions, a clear and user-friendly index, disaggregated data (gender, rural–urban, public–private), and primary surveys to capture granular, on-ground insights.

The HDR will serve as a district-level baseline across key domains—education, health, environment, livelihoods, and spatial transformation—and will track progress in maternal and child well-being, Water, Sanitation, and Hygiene (WASH), pollution, land use, and access to essential services.

Read more [here](#).



**Mr. Sushil Sarwan IAS,
Deputy Commissioner, Sonipat**



**Prof. (Dr.) Mrinalini Jha,
Director, Jindal Institute of Haryana Studies**

HERITAGE VISIT TO RAKHIGARHI

21 September 2025

In collaboration with the **Department of Archaeology & Museums, Haryana**, JIHS organised a heritage visit to Rakhigarhi, one of the most significant sites of the **Harappan Civilisation**.

The day included a guided heritage walk, an interactive pottery-making workshop, and a traditional Haryanvi lunch at Rakhigarhi Resort & Farm. The visit brought together over forty faculty and staff members for a warm and immersive exploration of the region's history and culture. The experience curated by Prof. Sukanya Sharma strengthened our connection with the community and highlighted JIHS's commitment to experiential learning and celebrating Haryana's rich cultural heritage.

Read more [here](#).






RAKHIGARHI

DISTINGUISHED PUBLIC LECTURE BY DR. RAJ NEHRU

15 October 2025

JIHS hosted a Distinguished Public Lecture by **Dr. Raj Nehru, Officer on Special Duty to the Chief Minister of Haryana and Director General, Swarna Jayanti Haryana Institute for Fiscal Management (SJHIFM)**. Dr. Nehru discussed the **Haryana Government's roadmap** for contributing to **Viksit Bharat @ 2047**. Discussions revolved around evidence-based policymaking, governance reform, public health, education, and sustainable urbanisation. The session reinforced JIHS's commitment to supporting data-driven governance and SDG-aligned policy initiatives in partnership with state institutions.

Read more [here](#). 



Prof. (Dr.) Raj Nehru



COMMEMORATING HARYANA FORMATION DAY

3 November 2025

JIHS commemorated Haryana Formation Day by organising a Panel Discussion on “**New Haryana, Old Boundaries: Conversations on Gender and Caste.**” The discussion explored evolving Haryanvi identity, caste diversity across regions, religiosity, khap panchayats, sex ratio and gender parity, and crisis of masculinity, while highlighting the transformative role of sports in social change.

A curated exhibition featuring scholarly works added depth and visual richness to the dialogue. The event provided a reflective platform for understanding Haryana's evolving social fabric and reinforcing the importance of inclusive development.



Prof. (Dr.) Surinder S. Jodhka
Professor, Jawaharlal Nehru University

Read more [here](#).



Discussion with esteemed panelists **Prof. (Dr.) Surinder S. Jodhka**, Professor, Jawaharlal Nehru University; **Prof. (Dr.) Ravinder Kaur**, Professor Emerita, Indian Institute of Technology Delhi; **Prof. (Dr.) Bhupender Yadav**, Professor of History; **Prof. Prachy Hooda**, Lecturer, Office of Interdisciplinary Studies (I.D.E.A.S.) and **Prof. (Dr.) N. Chandra Bhanu**, Assistant Professor, Jindal Global Law School



ONGOING FIELD STUDY OF RURAL HOUSEHOLDS IN SONIPAT DISTRICT

May-July 2025

JIHS is conducting a rural field study under **Project Ecological, Agrarian, and Rural Transformations of Haryana (EARTH)**, involving **Focus Group Discussions across three villages—Manouli (Rai Block), Pipli-R (Kharkhoda Block), and Kathura (Kathura Block)**. The study explores agrarian and ecological transitions in Haryana's rural landscape. Key themes emerging from the discussions include economic diversification driven by industrialisation and urbanisation, shifting cropping and land-use patterns, a decline in cattle rearing and animal husbandry, and evolving climate perceptions among households. Insights from this ongoing research are contributing to current and upcoming publications.



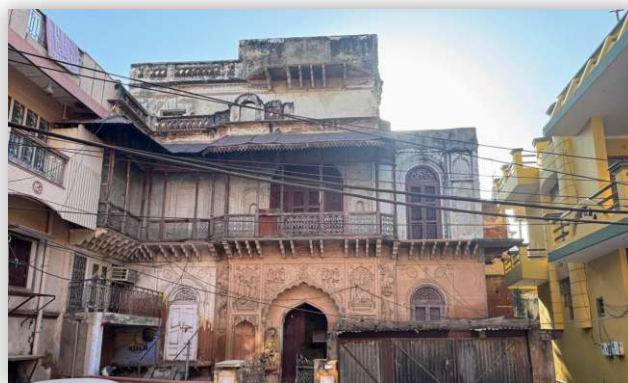
CULTURAL DOCUMENTATION INITIATIVES

August-November 2025

Including the historic bazaars of Sonipat, this effort seeks to recognise, document, and celebrate the cultural richness and lived histories across the state.

At JIHS, we remain committed to translating knowledge into action. Through sustained research, meaningful collaborations, and active

community engagement, we strive to build pathways for sustainable and equitable development across Haryana. We invite policymakers, academics, practitioners, and citizens to join us in co-creating grounded, thoughtful solutions that advance the state's inclusive growth. As we deepen our research efforts and strengthen partnerships in the months ahead, we look forward to working together toward a more resilient, forward-looking, and prosperous future for Haryana.



FUTURE DIRECTIONS AND COLLABORATIONS

Sonipat Human Development Report (SHDR)

A key milestone in the coming weeks is the launch of the Sonipat Human Development Report (SHDR), developed in collaboration with United Nations Development Programme (UNDP), Sustainable Development Goals Coordination Centre (SDGCC) Haryana, and other state and development partners. Scheduled for release this winter, the HDR provides a clear, comprehensive, and accessible picture of Sonipat's progress across education, health, livelihoods, the environment, and governance. Designed as a baseline document, it aims to strengthen data-driven policymaking, support district-level planning, and serve as a model for development assessments across Haryana.

Health and Education Access, Legal and Entitlements, Institutions, Environment, and Governance (HEALING)

This programme focuses on unplanned urbanisation, sanitation challenges, and access to essential services, with special attention to rapidly transforming areas such as the Rai Industrial region.

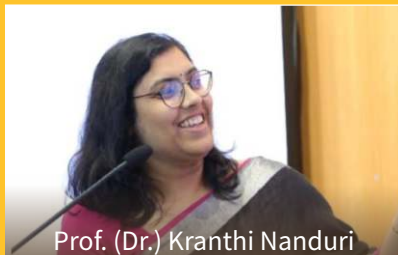
Ecological, Agrarian, and Rural Transformations of Haryana (EARTH)

This vertical studies rural livelihoods, agrarian transitions, and environmental sustainability to support resilient policy and community frameworks.

Entrepreneurial Spillovers and Regional Growth in Haryana (ESPRiG)

This programme examines how Haryana's proximity to the Delhi-NCR region shapes entrepreneurship, innovation, and regional economic opportunities.

Snapshots of JIHS Team in Action



Prof. (Dr.) Kranthi Nanduri



Prof. (Dr.) Bhuvaneswari Raman



Prof. (Dr.) Jannet John



Prof. (Dr.) Indranil Mukhopadhyay



Prof. (Dr.) Rahul Menon



Prof. (Dr.) Narbadeshwar Mishra



Prof. (Dr.) Bramha Gupta



Prof. (Dr.) Shivangi Gupta



Prof. (Dr.) Namesh Killemsetty



Prof. (Dr.) C. Raj Kumar, Vice-Chancellor, O.P. Jindal Global University; **Prof. (Dr.) Mrinalini Jha**, Director of Jindal Institute of Haryana Studies (JIHS); **Prof. R. Sudarshan**, Dean, Jindal School of Government and Public Policy and the JIHS Team engaging with **Shri. Vikas Gupta**, IAS, Commissioner and Secretary of Urban Local Bodies, Haryana in Panchkula on 11 November 2025.

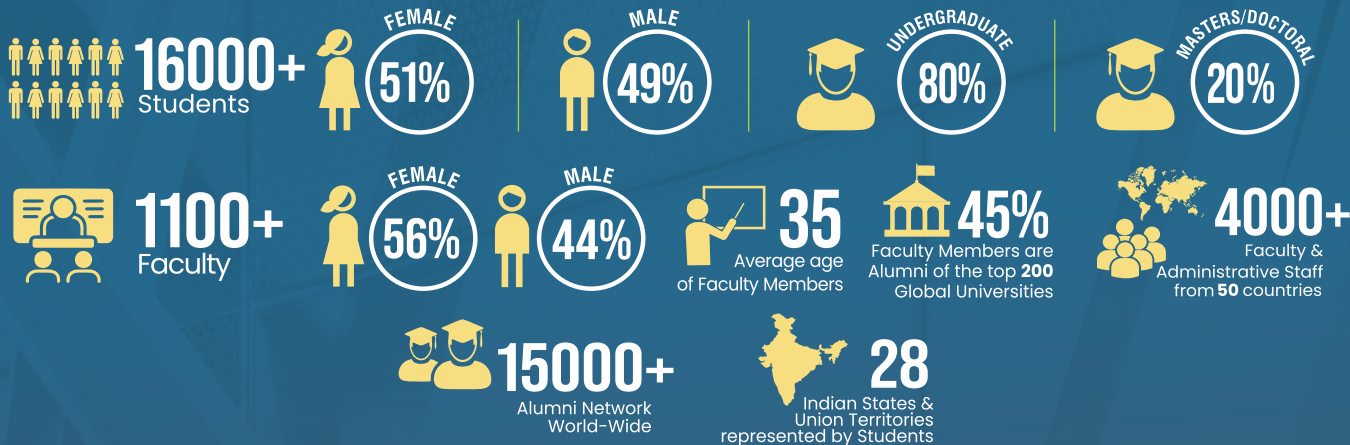


JIHS Team with **Shri Pankaj**, IAS, Director, Urban Local Bodies at Panchkula, Chandigarh on 1 September 2025



Authors of Sonipat Human Development Report briefing **Dr. Raj Nehru**, Officer on Special Duty to the Chief Minister of Haryana and Director General, Swarna Jayanti Haryana Institute for Fiscal Management

JGU *at a* GLANCE



12 SCHOOLS

50+ Programmes

30+ Undergraduate Programmes
 20+ Postgraduate Programmes
 Doctoral Programme



RESEARCH

6 Research & capacity building institutes

8500+ Publications

65+ Interdisciplinary research centres



INTERNATIONAL COLLABORATIONS

575+ Collaborations with International Universities & Higher Education Institutions

10 Forms of Global Partnerships

80+ Countries & Regions

250+ Faculty & Student Exchange Collaborations

100+ Countries represented by Students

RANKINGS & RECOGNITIONS

RANKED NO.1 IN INDIA
 LAW & LEGAL STUDIES

RANKED NO.1 PRIVATE UNIVERSITY IN INDIA
 ARTS & HUMANITIES

RANKED NO.1 PRIVATE UNIVERSITY IN INDIA
 POLITICS & INTERNATIONAL STUDIES

RANKED NO.1 IN THE WORLD
 TIMES HIGHER EDUCATION ONLINE LEARNING RANKINGS 2024

RANKED AMONG TOP 101-200 SDG 12 & 16 GLOBALLY
 TIMES HIGHER EDUCATION IMPACT RANKINGS 2024

AMONG 6% B-SCHOOLS GLOBALLY WITH
 AACSB ACCREDITATION

QS WORLD UNIVERSITY RANKINGS
 BY SUBJECT 2025

THE Times Higher Education

AACSB ACCREDITED

CONFERRED THE STATUS OF AN
INSTITUTION OF EMINENCE
 BY THE MINISTRY OF EDUCATION
 GOVERNMENT OF INDIA

Sonipat-131001, (NCR of Delhi)



www.jgu.edu.in

JGU - An Initiative of Jindal Foundation