



O.P. JINDAL GLOBAL
INSTITUTION OF EMINENCE DEEMED TO BE
UNIVERSITY
A Private University Promoting Public Service



**Jindal School of
Liberal Arts & Humanities**
India's First Transnational Humanities School



**Jindal School of Government
and Public Policy**
India's First Public Policy School



BACHELOR OF ARTS (HONS.) IN PHILOSOPHY, POLITICS AND ECONOMICS



JGU | O.P. Jindal Global University



O.P. Jindal Global University (JGU) is a non-profit, multi-disciplinary, and research-oriented university founded in 2009. JGU was established as a philanthropic initiative by its Founding Chancellor, Mr. Naveen Jindal, in memory of his father, Mr. O.P. Jindal.

JGU has over 16,000 students, more than 1,100 full-time faculty members, and over 2,900 administrative staff on its fully residential campus. The university comprises twelve schools focusing on various disciplines, including Law, Business & Management, International Affairs, Public Policy, Liberal Arts & Humanities, Journalism, Design & Architecture, Banking & Finance, Environment & Sustainability, Psychology & Counselling, Languages & Literature, and Public Health & Human Development.

Over the past decade, JGU has evolved into an institution that brings together full-time faculty from more than 50 countries, students from over 100 countries, and collaborations with more than 575 leading institutions in 80+ countries, creating a truly international learning experience.

JGU is ranked Number 1 in the world with the highest overall score amongst all universities and awarded 'Gold' by the Times Higher Education (THE) Online Learning Rankings 2024. JGU has been ranked as India's Number 1 Private University for three years in a row by the prestigious QS World University Rankings 2021-2023. JGU has been recognised among the Top 150 universities globally under the age of 50 years by the QS Young University Rankings. JGU has also been recognised in the Top 500 Universities as per the QS Graduate Employability Rankings 2022.

The Jindal Global Law School, has retained its number one rank in India for six consecutive years and remains the only Indian law school listed in the Global Top 100 by the QS World University Rankings by Subject 2025. Furthermore, JGU holds the distinction of being India's top private university for Arts & Humanities and Politics & International Studies (within the Top 201-250 globally). It ranks among the top two private universities in India for Economics & Econometrics, among the top three private universities in India (Top 274 in the world) for Social Sciences & Management, and among the top six private universities in India for Business & Management Studies (Top 500 in the world) as per the QS World University Rankings by Subject 2025. In 2020, JGU was recognised as an 'Institution of Eminence' by the Ministry of Education, Government of India.



Message from the Vice-Chancellor

Professor (Dr.) C. Raj Kumar

**Founding Vice-Chancellor,
O.P. Jindal Global University (JGU)**

LL.B. (University of Delhi);
B.C.L. (University of Oxford);
LL.M. (Harvard University);
S.J.D (University of Hong Kong)

Welcome to O.P. Jindal Global University (JGU) - A Private University Promoting Public Service. JGU has consistently affirmed the ideas of interdisciplinary education, diversity, and excellence in our relentless pursuit of knowledge. For this, we have consistently ranked as India's No. 1 university dedicated to Social Sciences, Arts and Humanities. Our recognition as an Institution of Eminence (IoE) in 2020 by the Government of India has been another important milestone and a testament to our bright academic journey. It is my pleasure to invite you to join the Bachelor of Arts (H) in Philosophy, Politics and Economics programme, which is built to create future-ready practitioners, thinkers, and scholars. The programme is offered by two leading schools at JGU, the Jindal School of Government and Public Policy (JSGP) and the Jindal School of Liberal Arts and Humanities (JSLH).

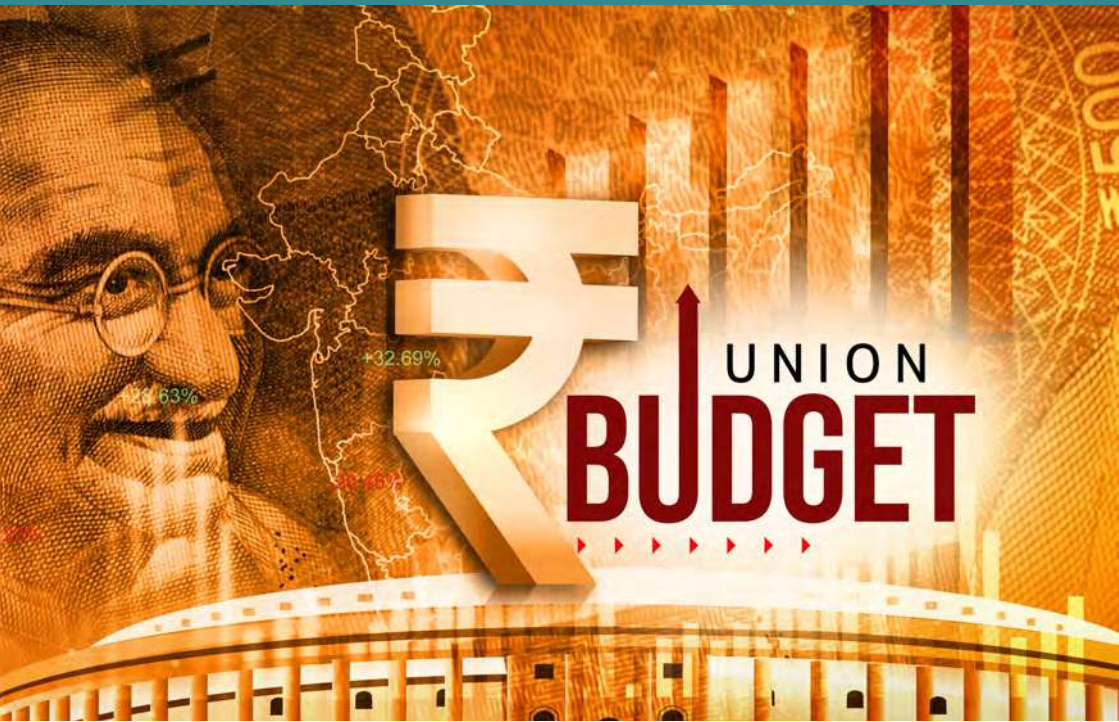
Introduction

to the Bachelor of Arts (H) in Philosophy, Politics and Economics



The Bachelor of Arts in Philosophy, Politics and Economics (PPE) is a four-year interdisciplinary programme designed for young thinkers interested in having a rigorous understanding of all three disciplines. It is aimed at understanding the big questions of what underpins the foundations of economics, politics and philosophy as independent disciplines and develop a comprehensive understanding of their inter-play to equip the student to make an impactful change in society. The programme will develop the student's capacity to identify and analyse increasingly complex real-world problems that disciplinary straitjackets cannot resolve.

Based out of two schools at the O. P. Jindal Global University, the Jindal School of Government and Public Policy (JSGP) and the Jindal School of Liberal Arts and Humanities (JSLH), the programme offers an opportunity to have the best of what both schools have to offer and develop a critical perspective on issues of the contemporary world from a standpoint of the Global South. The programme capitalises on the multi-disciplinary expertise of both the Schools and is aimed at students interested in politics, law, academia, the development sector and non-governmental organisations, diplomacy, governance and social entrepreneurship.



Combining the three disciplines allows students to understand the ethical foundations of human behaviour and develop critical thinking and analytical abilities, learning the necessary skills to work with complex data and develop a nuanced understanding of how modern society operates. The programme will focus on contemporary issues relevant to all three disciplines in order to develop an interrogative mindset that looks at issues in modern society and politics from more than one lens and through the spirit of a critical dialogue.





Prof. R. Sudarshan

*Dean, Jindal School of Government
& Public Policy (JSGP)*

Message from the Deans

The O.P. Jindal Global University (JGU) has pioneered multidisciplinary studies through its professional programmes in law, architecture and public policy, alongside social science disciplines, liberal arts and humanities. Multidisciplinary refers to the juxtaposition of insights and methods from various disciplines. Our pedagogy at JGU is interdisciplinary, an approach to teaching and learning that integrates knowledge, methods, and perspectives from multiple disciplines to address contextually relevant problems and issues. Such a holistic perspective is needed to understand multifaceted concerns not confined within the boundaries of a single discipline.

JGU's emphasis on experiential learning promotes transdisciplinarity by combining academic knowledge with practical insights from individuals and communities outside its campus. Including knowledge of people who experience real-world problems which paves the way for the practical application of theoretical insights. The combination of multidisciplinary, interdisciplinary, and

transdisciplinarity enables students to transcend the limitations of traditional disciplinary silos and learn about collaborative approaches best suited to tackle the complexities of the modern world.

To equip students with knowledge that has intrinsic value and instrumental uses, with an emphasis on techniques and skills, the Jindal School of Liberal Arts and Humanities (JSLH) and the Jindal School of Government and Public Policy (JSGP) have come together to offer an undergraduate degree programme in Philosophy, Politics, and Economics (PPE).

The PPE programme provides a unique perspective to understanding real-world challenges and their responses by combining philosophy, politics and economics perspectives. The programme examines the foundational value of these disciplines while simultaneously encountering the effects of their overlapping conditions.

The three disciplines mutually enrich one another and are more manageable than



Prof. Kathleen A. Modrowski

Dean, Jindal School of Liberal Arts
& Humanities (JSLH)



attempting to focus on **all** of the social sciences in an undergraduate programme. The PPE programme's pedagogical approach (multi, inter, and transdisciplinary) offers a pathway to understanding the rapidly changing constellation of contemporary issues. Today's post-colonial world must recognize the economic, social and cultural relevance of countries mainly (but not only) in the Global South.

The PPE programme is ideal for those who wish to take up any career or calling in the global public domain. PPE graduates **will** become adept at viewing problems through multiple lenses. They will possess strong analytical skills, enabling them to evaluate arguments, data, and policies critically. They **will** acquire proficiency in formal reasoning, quantitative analysis, and qualitative assessment. They will develop the capacity to consider the ethical implications of decisions and policies, making them conscientious decision-makers who can balance economic and political feasibility with moral considerations.

PPE students **will** also acquire the skills to conduct rigorous research using multiple methods. They will learn to become effective communicators, capable of articulating complex ideas clearly and persuasively to diverse audiences. They **will** learn to tackle real-world problems by integrating knowledge from different disciplines to devise innovative solutions. They **will** acquire a broad understanding of global issues, making them well-suited for roles in international organizations, NGOs, and global policy-making bodies.

In short, the PPE programme offered jointly by the JSLH and JSGP faculties **will** give its graduates the attributes that **will** remain in demand in a constantly changing world in **all** manner of human endeavor.

Why should you consider a Philosophy, Politics and Economics Degree (PPE)?

Today we live in a world where our future is going to be shaped by institutions – both economic and political. It is important that students are equipped, as they step into that future that they understand the underpinnings of how different institutions work. It is essential to understand the foundational roots of how society, in all its complexity works and how power, morality, ethics are all essential ingredients of this complexity which cannot be grasped through a singular lens.

At its core, the discipline of modern economics has its origins in moral philosophy and political theory. Similarly, the boundaries between politics and economics are fluid, and it is difficult to study politics without understanding economic structures or the philosophical intentions between different types of power structures at the helm of modern decision making. If the students of today want to be meaningful contributors to shaping the world, they should know and appreciate how economic and political decisions are made as well as understand what underpins the ethical or normative debates behind these decisions that impact us in our lives. As we move into an increasingly complex future, philosophy similarly enables us to be able to ask ethical questions which helps us direct the nature of our future institutions, inform our decision making and shape the future of our world as it ought to be.

The PPE programme offers students a distinctive opportunity to gain a holistic understanding of all three disciplines, one that goes beyond the scope of a traditional undergraduate economics/politics or philosophy course. This approach equips students to apply theoretical concepts more effectively in real-world situations as well as provides them with more transferable skills that can be used to resolve real life problems.



The advantages of a PPE Degree at JGU:



**Interdisciplinary programme
with equal focus on philosophy,
politics and economics.**



**Internship and
placement support**



**Research-Enhanced Learning
through research projects with
faculty and research centres**



**Training in quantitative
and qualitative research
methods**



**Opportunities across JGU's
multidisciplinary ecosystem
for co-curricular and
extra-curricular activities**



**Extensive toolkit
of transferable skills**



**An extensive list of discipline
and cross-school electives**



**Collaborations with
Highly Ranked International
Universities**



**A blend of traditional
and experiential learning**

Programme Structure



Students are required to complete forty-six four-credit courses over four years of study, comprising core subjects, research methods, and electives. In addition, they must undertake four internships during the programme.

The curriculum builds students' disciplinary foundations through seven core courses across the three disciplines, taught from an interdisciplinary perspective to highlight their interplay. A distinctive feature of the programme is a set of four interdisciplinary courses: Intersections of Philosophy, Politics and Economics, Economy and Society, Intersections: Big Ideas, and Intersections: Experiences from the Field, which enable students to critically engage with contemporary questions and pressing global challenges.

Alongside the core courses, students take five research methods courses designed to strengthen transferable analytical skills: Core Concepts in Logical Analysis, Ways of Knowing, Introduction to Statistics and Data Analysis, Econometrics: Theory and Application, and Qualitative Methods. From the second year onwards, these are complemented by a wide range of disciplinary and cross-disciplinary electives, allowing students to pursue their academic interests in depth.

A key aim of the programme is to train students in high-quality research and critical thinking, supported by a balanced mix of core and elective courses. In the fourth year, students also have the option of writing a faculty-supervised dissertation.

The PPE programme integrates theory and practice, equipping students for both advanced studies and careers beyond academia, with the skills and experiences needed to excel in diverse fields. Each (core and elective) course is worth four credits. The dissertation is worth twelve credits. Students will be required to earn at least 192 credits to graduate from the program (including 8 credits from 4 internships, each worth 2 credits). The program structure is as follows.

SEMESTER I	Credits 6*4=24
■ The Intersections of Philosophy, Politics and Economics	
■ Essential Toolkit for Economics	
■ Foundational Concepts in Political Theory	
■ Foundational Questions in Philosophy	
■ Economy and Society	
■ Academic Writing	

SEMESTER III	Credits 6*4=24
■ Modern Western Philosophy	
■ Political Processes in India	
■ Macroeconomics: Understanding Economic Aggregates	
■ Microeconomics: Consumption and Production	
■ Statistics and Data Analysis	
■ Disciplinary Elective/ Minor Course I	

SEMESTER II	Credits 6*4=24
■ Core Concepts in Logical Analysis	
■ Indian Political System	
■ Introduction to Ethics	
■ State and Governance	
■ Influential Ideas in Economics	
■ Ways of Knowing	

SEMESTER IV	Credits 6*4=24
■ Introduction to Indian Philosophy	
■ Microeconomics: Dynamics of Markets	
■ Intersections: Big Ideas	
■ Critical Perspectives on Politics	
■ Econometrics: Theory and Application	
■ Disciplinary Elective/ Minor Course II	

SEMESTER V	Credits 6*4=24
■ Macroeconomics: Dynamics of the Global Economy	
■ Qualitative Methods	
■ Social Epistemology	
■ Discipline Elective	
■ Discipline Elective	
■ Elective/ Minor Course III	

CREDIT REQUIREMENT FOR B.A. IN PHILOSOPHY, POLITICS AND ECONOMICS (3-YEAR): 150 CREDITS, INCLUDING 112 CREDITS FROM THE CORE COURSES, 32 CREDITS FROM ELECTIVE COURSES AND THREE COMPULSORY INTERNSHIPS OF 2 CREDITS EACH (TOTAL 6 CREDITS).

SEMESTER VII	Credits 5*4=20
■ Philosophical Perspectives from the Global South	
■ Indian Economy: Trends and Challenges	
■ Elective/ Dissertation Workshop	
■ Elective/ Minor Course V	
■ Elective	

CREDIT REQUIREMENT FOR B.A. (HONS., WITH OR WITHOUT RESEARCH) IN PHILOSOPHY, POLITICS AND ECONOMICS (4-YEAR): 192 CREDITS, INCLUDING 124 CREDITS FROM THE CORE COURSES, 60 CREDITS FROM ELECTIVE COURSES AND FOUR COMPULSORY INTERNSHIPS OF 2 CREDITS EACH (TOTAL 8 CREDITS).

Disciplinary Electives

Economics	Philosophy	Politics
Game Theory	Cultural Epistemology (East and West)	Comparative Politics: Cold War and after-political economy and comparative politics
Development Economics	Cultural Ideas of Cosmopolitanism (East and West)	Critical concepts and emerging changes in contemporary IR: New security challenges
Climate Change and Ecological Economics	Cultural Notions of Self (East and West)	Critical Theory
Money and Banking	Cultural Philosophy of Religion (East and West)	Nations and Nationalism
Politics of Public Policy	Philosophy, Ethics and Technology	Politics and Practice: Society and political recognition in the modern world

Note: The list of disciplinary electives is indicative and subject to revision.

SCHOOL	Minor Courses
JSIA	International Affairs and Diplomacy
JSLI	English
JSBF	Banking & Finance
JSLH	Sociology Visual Arts
JSGP	Public Policy Data Science & Analytics

SCHOOL	Minor Courses
JSDA	Urban Studies Interior Studies Architectural Studies
JSES	Environment & Sustainability
JSPC	Psychology
JSJC	Media & Communication

Key Features >>>



Interdisciplinary Rigour

The curriculum weaves together philosophy, political theory, and economics, providing students with a deep understanding of each discipline and their interconnection.



Robust Research Methods Training

Students take courses in statistics, econometrics, qualitative research, and fieldwork, preparing them for both academic research and policy work.



Compulsory Internships for Real-World Engagement

The programme includes four required internships that provide experience across government departments, think tanks, NGOs, international organisations, and corporate policy teams.



Field Exposure and Experiential Learning

The programme emphasises immersion and community engagement, allowing students to connect theory with real-world issues via fieldwork and internships.



Research-Enhanced Learning

Students collaborate with faculty on substantive research projects and have opportunities to work with JSLH and JSGP research centres as well as JGU's wider research organisations, gaining exposure to high-quality academic and policy research.



Opportunities Across JGU's Multidisciplinary Ecosystem

Students can pursue minors in other JGU schools, participate in policy clubs and academic initiatives, and benefit from the University's extensive global collaborations.

Career Pathways for Philosophy, Politics and Economics Degree (PPE) Graduates >>>

An illustrative list of careers where PPE graduates are prized and poised for progress includes the following:

- **Governance, law and academia**
- **Banking and Finance**
- **Business Management**
- **Civil Society and Non-governmental organisations**
- **Consultancy**
- **Data Analytics**
- **Journalism**
- **Thinktanks and Policy management**

Students who complete the 4-year degree with research will be able to transition directly into a PhD programme or enrol in a 1-year master's program in philosophy, political science, economics and specialised programs drawing from these disciplines. The master's pathways with our partner universities provide additional opportunities for academic progression.

Career Support

Students will be mentored by faculty to achieve their career goals by utilising the vast pool of opportunities available at JGU, which includes support for international immersion, internships and job placements.

Organisations where students are placed for internships:

 AGA KHAN FOUNDATION	 The Asia Foundation	 ASPIRE INDIA SCHOLARS PROGRAMME	 Bay of Bengal Programme Inter-Communities Organisation	 CBGA
 Centre for Budget and Policy Studies	 IIM AHMEDABAD CMHS	 CENTRE FOR POLICY RESEARCH	 CPR Centre for Public Policy Research	 CAREING FOR THOSE WHO FEED THE NATION USA SINCE 2004
 Commonwealth Human Rights Initiative	 CEEW THE COUNCIL	 Department of Environment Government of NCT of Delhi	 DIALOGUE DEVELOPMENT COMMISSION DELHI	 giz Deutsche Gesellschaft für Internationale Zusammenarbeit (GIZ) GmbH
 GLOBAL SOLUTIONS THE WORLD POLICY FORUM	 NHSRC	 National Human Rights Commission (NHRC)	 NIPF	 राष्ट्रविपरास NIRDPR www.nirdpr.org.in
 राष्ट्रविपरास NIRD	 nim NATIONAL INSTITUTE OF URBAN MANAGEMENT Professionalising Urban Management	 OLA MOBILITY INSTITUTE	 PATH 100% 0% 100% 0%	 Pratham
 भारतीय जन स्वास्थ्य प्रतिष्ठान	 RIS Research and Information System for Developing Countries Research and Information System for Developing Countries	 Rodric Research and Information System for Developing Countries	 Sangath	 Save the Children



International Collaborations



Internationalization is a core mission of O.P. Jindal Global University. Students in the PPE programme will be encouraged to take advantage of the several international opportunities that JGU offers. Two key pathways are available to students: the Short Term Study Abroad Programmes (STSAP) and semester-long study abroad programmes through exchanges. These programmes will allow students to broaden their knowledge base in Politics, Philosophy and Economics.

Short-Term Study Abroad Programmes

The STSAPs are organised during the summer and winter breaks, and are coordinated by faculty members from JGU and partner universities. Two key examples are listed below:

■ **JGU-University of Oxford summer programme on the PPE:**

The programme is based on the renowned Politics, Philosophy and Economics (PPE) course at the University of Oxford and provides students with an excellent opportunity to reside and study at one of the most prestigious universities in the world- the University of Oxford. Over the course of their stay,

students will be attending lectures delivered by some of the leading academics in the three disciplines and experience the unique tutorial system at Oxford. Alongside intensive studies, a number of social events and a daytrip to London will ensure that students enjoy their time and gain a holistic experience of living and studying in this historic university-town.

JGU-Sciences Po summer programme:

- This course introduces students to the European integration process and the European Union. The interdisciplinary approach that brings together experts in the fields of law, political science, sociology and economics. The course is structured around these themes covering the main aspects of the European integration process namely the history and institutions of the EU; the European Union and the World; and the major issues in contemporary Europe.



Semester-long exchange programmes

Students in the PPE programme will have access to JGU's **500+ partnership** opportunities with top-ranked universities across the world. With **200+ study abroad opportunities**, students have a wide range of programmes to choose from. Please see the map below for places you can go to when you opt for the PPE programme at JGU.

Mentorship in the Philosophy, Politics and Economics programme (PPE)?



Students in the PPE programme will benefit from academic mentorship to help them navigate the connections between disciplines. Each student will be allocated to a faculty member from Jindal School of Government and Public Policy (JSGP) and Jindal School of Liberal Arts and Humanities (JSLH) based on their preliminary interest. The bi-monthly mentoring sessions will help students develop their interest areas as well as synthesize their internship experience with academic learning.



Student Led Initiatives



JSLH

PRAYAAS »»

Prayaas (प्रयास) is an endeavour of Centre for New Economics Studies, Jindal School of Liberal Arts and Humanities, O.P. Jindal Global University to expand the breadth of intellectual knowledge, while incubating a spirit of 'knowing' amongst students of social sciences, arts, and humanities across India and South Asia.

NEEDLE »»

The Needle Magazine, which was born out of a conversation based on a shared love for art, is a student-run magazine from the Jindal School of Liberal Arts and Humanities. Conceived by Ira Sinha and Ruhi Nadkarni, Needle seeks to bring voices from the JGU community together in every artistic shape and form. Through Needle, we hope to create a sense of community, as well as a space to share our works and explore how we connect with art individually and collectively.

INTER-LINKED »»

InterLinked: 'A Podcast Series: The Journey from a Pen to a Mic' aims to hold nuanced conversations on the interdisciplinary nature of the problems plaguing the world today. In many ways, intersectionality has become the backbone of most of the academic discourse. No longer do we simply understand problems in the tight neat boxes that they were hitherto classified into. As we hold conversations on the socio-political climate, we want to break down these intellectual barriers and look at topics in a way that will allow us to question them from several facets. Thus, we are committed to providing students with an insight into this, but from newer and more innovative angles.

TAREEKH »»

Tareekh is a JSLH student History society established in 2022 with the objective of providing a forum for history enthusiasts to meet, discuss and explore any aspect of the Historical discipline, broadly understood. This year Tareekh scaled new heights by opening the society out to other history buffs irrespective of their JGU schools. Membership to the society is voluntary and currently stands at ninety members. The society has organized film screenings, quiz competitions and a trip to Majnu ka Tilla in North Delhi. It also curates an Instagram page (tareekh.jslh) with content generated by its members. The faculty co-ordinators of Tareekh are Prof. Zaheer Abbas, Prof. Swati Chawla and Prof. Saagar Tewari.

THE AGORA »»

The Agora is a student-led, faculty-supervised Politics and IR initiative at JSLH. Named after the ancient Greek public space where citizens debated and shaped democratic life, it is a vibrant intellectual hub for students interested in politics, global affairs, and critical thought. It is a space meant for meaningful dialogue, interdisciplinary exploration, and collaborative learning. They organize a range of activities including a newsletter, flash debates, movie screenings, panel discussions and many more, and try to bridge the gap between theory and real-world political dynamics.

JSGP

YOUTHOPIA »»

Youthopia, JSGP's annual Economics and Finance festival, is held over three days and draws participation from students representing more than 35 universities. The festival features competitive events and offers a vibrant mix of academic and co-curricular engagements, establishing itself as a key platform for intellectual exchange and creative expression.

POLICY CORNER »»

Policy Corner is an online writing space for the JSGP Student community. It was started by students to inculcate a culture of writing among the JSGP students. The main objective of the policy blog is to provide students a platform to discuss local, national and global policy issues with a wider audience. Right from its inception, Policy Corner has been a popular medium of debate and deliberation. It has published interesting, thought-provoking, and relevant content on policy and social issues.

Jindal Policy Conclave (JPC) »»

The Jindal Policy Conclave is a flagship annual event of the Jindal School of Government and Public Policy that brings together students, academics, policymakers, practitioners, and public leaders for robust discussions on contemporary governance and development challenges. It serves as a platform for students to engage directly with leading experts, present ideas, and participate in interactive panels and workshops. The Conclave encourages critical thinking, informed debate, and evidence-based approaches to policy problems. It also showcases student-led initiatives, fosters collaboration across institutions, and strengthens JSGP's commitment to shaping public discourse and nurturing the next generation of policy professionals.

ARTHANITI »»

Arthaniti stands for growth and with the synergy of cooperation and development, we seek to create a close-knit community that adheres to inclusion of people from various subject-fields. While Economics is where the understanding of the society begins, our idea of progress is based upon inclusion and collaborative effort.

Faculty @ Philosophy, Politics and Economics Degree (PPE)



PROFESSOR R. SUDARSHAN

Professor and Dean

B.A. (Hons.) (Economics), (Bangalore University);
M.A. (Economics), (Delhi School of Economics);
M.Phil. Politics, (University of Oxford)



PROF. (DR.) NAVEEN JOSEPH THOMAS

Professor and Vice Dean

B.Sc. (Physics), (University of Delhi);
M.Sc. (Economics), (TERI University);
Ph.D., (Economics), (Delhi School of Economics)



PROF. (DR.) NARESH SINGH

Professor and Director - Centre for Complexity Economics & Applied Spirituality for Public Policy (CEASP)

B.Sc. (Natural Sciences), (University of Guyana, Georgetown);
M.Sc. (Agriculture) Indian Agricultural Research Institute (IARI), New Delhi; Ph.D. (Environmental Sciences), (University of West Indies, Jamaica)



PROF. (DR.) DEBAJIT JHA

Professor and Associate Dean, Admissions and Outreach

B.A. (Economics), (University of North Bengal);
M.A. (Economics), (Banaras Hindu University);
Ph.D. (Economics), (JNU, New Delhi)



PROF. (DR.) INDRANIL MUKHOPADHYAY

Professor and Editor, Jindal Journal of Public Policy

B.Sc. (Economics), (University of Calcutta);
M.A. (Economics); M.Phil. (Public Health);
Ph.D. (Health Economics) (JNU, New Delhi)



PROF. (DR.) SONALI ROY

Professor

B.Sc. (Economics) (University of Calcutta);
M.Sc. (Quantitative Economics); Ph.D. (Economics), (Indian Statistical Institute, Kolkata)



PROF. (DR.) SUBHASISH RAY

Professor and Associate Dean, Faculty Research & Publications

B.Sc. (Economics), (St. Xavier's College, Kolkata);
M.A. (Economics); M.Phil. (Economics), (JNU, New Delhi);
Ph.D. (Political Science), (University of Rochester)



PROF. (DR.) SWETASREE ROY

Professor and Associate Dean, Institutional Promotion, Director-Jindal Policy Research Lab (JPRL)

B.A. (Political Science) (University of Calcutta);
M.A. (International Relations); M.Phil. (East Asian Studies), (JNU, New Delhi); M.A. (Political Science);
Ph.D. (Politics & Government), (Louisiana State University)



PROFESSOR KATHLEEN A. MODROWSKI

Professor and Dean

B.A., University of Toledo;
Diplôme des Etudes Supérieures,
Ecole des Hautes Etudes en Sciences Sociales (Paris);
ABD, Ecole des Hautes Etudes en Sciences Sociales (Paris)



PROF. (DR.) JAYANI JEANNE BONNERJEE

Professor and Vice Dean

B.Sc. (Geography), Loreto College (Calcutta University);
M.Sc. (Geography); Ph.D. (Geography), (Queen Mary (University of London)



PROF. (DR.) AVINASH ANIL GODBOLE

Professor and Associate Academic Dean

B.A. (Psychology), (University of Mumbai);
M.A.; M.Phil.; Ph.D. (School of International Studies, JNU, Delhi)



PROFESSOR DEEPANSHU MOHAN

Professor of Practice and Director, Centre for New Economics Studies, Jindal School of Liberal Arts & Humanities, O.P. Jindal Global University

B.A. Economics Fergusson College, (Pune);
Masters in Economic History (London School of Economics, London)



PROF. (DR.) SUBHRA K. BHATTACHARYA

Professor

B.Sc. (Economics), (University of Calcutta);
M.A. (Economics); M.Phil. (Economics), (JNU, Delhi);
Ph.D. (Economics), (Iowa State University)



PROF. (DR.) SUBARAN ROY

Professor

B.Sc. (Economics), (University of Calcutta);
M.A. (International Economics), (JNU, New Delhi);
M.S. (Economics); Ph.D. (Economics), (Louisiana State University)



PROF. (DR.) SWAGATO SARKAR

Professor

B.Sc. (Mass Communication), (University of Calcutta);
M.A. (Social Welfare Administration - Social Work), (TISS, Mumbai); M.Phil. (Development Studies);
D.Phil. (Development Studies), (University of Oxford)



PROF. (DR.) DONY ALEX

Associate Professor

M.Phil. (Economics), (University of Delhi);
Ph.D. (Economics), (Australian National University)

**PROF. (DR.) GURPREET SINGH****Associate Professor and Associate Dean,
International Collaborations**B.A. (Economics); M.A. (Economics), (Panjab University)
M.Phil (Applied Economics); Ph.D. (Economics),
(JNU, New Delhi)**PROF. (DR.) INDRANI
BHATTACHARJEE****Associate Professor**B.A. (Philosophy), (Mumbai University);
M.A. (Philosophy), (Pune University);
Ph.D. (Philosophy), (Jadavpur University);
Ph.D. (University of Massachusetts)**PROF. (DR.) MANINI OJHA****Associate Professor and Editor, Jindal Journal
of Public Policy**B.A. (Economics), (University of Delhi);
M.A. (Economics), (JNU, New Delhi);
M.A. (Economics), (Southern Methodist University);
Ph.D., (Southern Methodist University)**PROF. (DR.) MRINALINI JHA****Professor and Director, Jindal Institute of Haryana Studies**B.A. (Economics), (University of Delhi);
Post-Doctoral Research Fellow, (Centre for Sustainable
Employment at the Azim Premji University);
Ph.D., (University of Delhi)**PROF. (DR.) AVANINDRA
NATH THAKUR****Professor**B.A. (Economics), (University of Delhi);
M.A. (Economics); M.Phil. (Economics);
Ph.D. (Economics), (JNU, New Delhi)**PROF. (DR.) R. KRISHNASWAMY****Associate Professor, Philosophy**M.A. (Kerala University);
M.Phil.; Ph.D., (University of Delhi)**PROF. (DR.) RAHUL MENON****Associate Professor and Associate Dean
Conferences and Open Lectures**B.A in Economics and Statistics, (St Xavier's College, Mumbai);
M.A in Economics, (Gokhale Institute of Politics and Economics);
M.Phil in Economics; Ph.D. in Economics, (JNU, New Delhi)**PROF. (DR.) SHIVANGI CHANDEL****Associate Professor and Associate Dean,
Examinations and Assessments**B.Sc. (Mathematics), (University of Delhi);
M.Sc. (Mathematics), (IIT Kanpur);
Ph.D., (Economics), (IGDR, Mumbai)**PROF. (DR.) SIDDHI GYAN PANDEY****Associate Professor**B.A. (University of Delhi);
M.A. (Economics); M.Phil.;
Ph.D., (JNU, New Delhi)**PROF. (DR.) SONAL DUA****Associate Professor and Associate Dean,
Executive Education**B.A. (Economics), (University of Delhi);
M.A. (Economics), (JNU, New Delhi);
Ph.D. (Economics), (University of Delhi)**PROF. (DR.) SUCHARITA SEN****Associate Professor**B.A. (University of Calcutta);
M.A. (Jadavpur University);
M.Phil. (University of Cambridge);
Ph.D. (Jamia Millia Islamia)**PROF. (DR.) SUNAINA DHINGRA****Associate Professor and Associate Dean,
PhD Programme**B.A. (Economics), (University of Delhi);
M.A. (Economics), (Jamia Millia Islamia University);
Ph.D. (Economics), (Delhi School of Economics)**PROF. (DR.) SUNETRA GHATAK****Associate Professor**B.A. (Economics), (North Bengal University);
M.A. (Economics), (Visva-Bharati University,
West Bengal); Ph.D. (Economics) (JNU, New Delhi)**PROF. (DR.) SWAGATA
BHATTACHARJEE****Associate Professor**B.Sc. (Hons.) (Economics), (Presidency College, University of Calcutta);
M.S. (Quantitative Economics), (Indian Statistical Institute, Delhi);
M.S. (Economics), Ph.D. (Economics), University of Texas at Austin**PROF. (DR.) TIRTHA CHATTERJEE****Associate Professor and Associate Dean,
Student Affairs**B.Sc. (Economics); M.Sc. (Economics),
(University of Calcutta);
M.Phil. (Development Studies); Ph.D.
(Development Studies), (IGDR, Mumbai)**PROF. (DR.) APARNA AGARWAL****Assistant Professor and Assistant Dean,
PhD Programme**B.A., (University of Delhi);
M.A.; M.Phil., (JNU, New Delhi);
D.Phil., (University of Oxford)**PROF. (DR.) PRITI AGARWAL****Associate Professor and Associate Dean (Research)
Editor, Jindal Journal of Public Policy**B. A. (Economics), (University of Delhi);
M. A. (Economics), (IGNOU- Gold Medalist in Economics);
Ph. D. (Economics), Centre for International Trade
and Development, (JNU, New Delhi)**PROF. (DR.) RASHMI SINGH****Assistant Professor**B.A. (Political Science), (University of Delhi);
M.A. (Political Science), (JNU, New Delhi);
M.Phil. (Gender Studies), (Ambedkar University);
Ph.D. (Sociology), (University of Cambridge)**PROF. (DR.) PRIYA RANJAN****Associate Professor**B.A. (Jawaharlal Nehru University);
M.A. (Jamia Millia Islamia);
M.Phil.; Ph.D. (Jawaharlal Nehru University)

Student Societies @ JGU



Abhivyakti - The Society for
Hindi Literature Poetry and Art

Academic Writing Society

Animal Welfare Society (AWS)

Aperture - Jindal Photography
and Visual Arts Society

Debate Society

Diplomania

Film Society

Girl Up JGU

History Society

JGU Book Club

JGU Investor Protection Cell

JGU Queer Society

JGU Quiz Society

JGU Sports Society

JGU Theatre Society

JGU Toastmasters Club

JGU Youth Parliament Society

Literary and Fine Arts Society

Mavericks

Music Society

Performing Arts Society

RAQS - JGU Dance Society

Rotaract Club

Social Service Society

The Environment Society

The Indic Studies Society



University hall of residence for students consists of several blocks of buildings designed by a French architect. University has:

- 24x7 health center with medical officer.
- Center for wellness and counselling.
- Washex hospitality solutions.
- 24x7 Security.
- State of the art sports facility includes badminton, tennis, basketball courts, cricket ground, football, volleyball, swimming pool, indoor games, gymnasium, yoga & aerobics.
- Multi-cuisine dining facility.
- Fully functional branch of ICICI bank with ATMs (ICICI bank and others) on several locations.
- Post office extension/courier office.



A world class food court - Outlets at this food court provide multi-cuisine options through brands such as Baskin Robins, Dominos, Subway, Bercos, Moti Mahal, Chaayos, Malgaadi Dhaba, Oki Poki, Dunkin Donuts, Nirula's , Bikanervala, Bercos, Mahabelly etc.

OTHER FACILITIES

APOLLO PHARMACY	AMUL ICE CREAM PARLOUR	Café COFFEE DAY TUCK SHOP
JUICE & MORE TUCK SHOP	CHAI TAPRI	TRIN BEAUTY SALON
STARBUCKS	CONVENIENCE STORE	REPROGRAPHIC CENTRE
NESTLE TUCK SHOP	LOOKS TAILORING HOUSE	

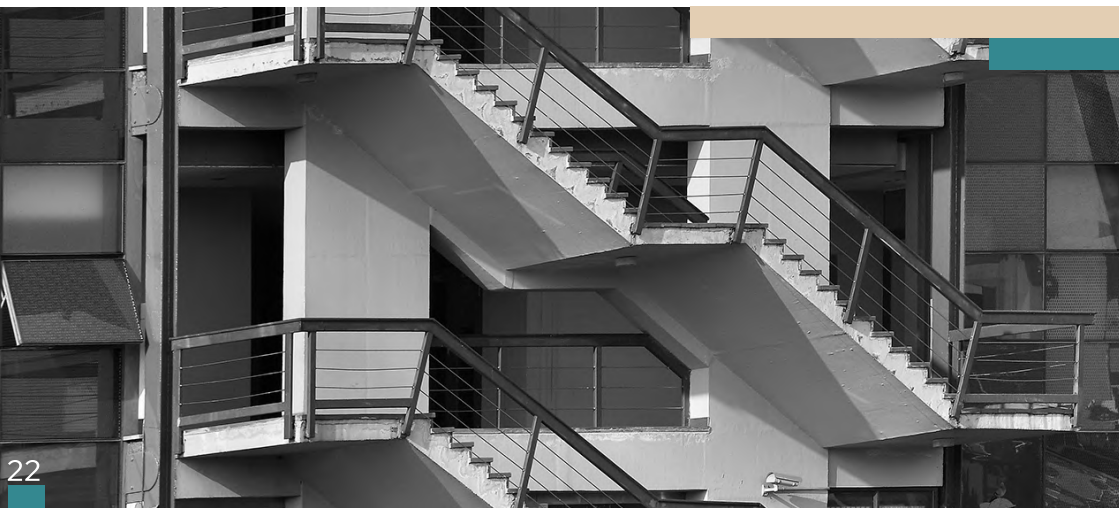
Programme Specifications



Programme	B.A. (Hons.) PPE		
Course Duration	4 Years		
Minimum Eligibility for Application	<p>Successful completion of the Class 12 examination in any Stream from an Indian or Recognized international board (CBSE ISC State Board Cambridge IB NIOS). IB students must secure a diploma with minimum 24 credits with minimum 3 HL and 3 SL subjects. For students enrolled in the Cambridge Board, applicants must appear for a minimum of 3 subjects at the A-level to be eligible to apply to the undergraduate programmes.</p>		
Admission Criteria	<p>Applications are shortlisted through a holistic process conducted over three stages. A. Review of the application form and personal statement, B. Performance in online entrance examination, or score of accepted national or international entrance examination. C. Personal Interview (on online video platform.)</p>		
Accepted Standardised Tests	JSAT / SAT / ACT / CUET		
Application Fee	₹ 2,500/- (Applicable for both UG programmes of JSGP)		
Tuition Fee	₹ 4,00,000/- per annum*	Refundable security deposit	₹ 50,000/-**

*The Tuition fee, Accommodation charges and other allied service charges are subject to an annual increase of upto 10%.

**Fully refundable Security deposit of Rs. 50,000 shall be collected at the time of admission as per university rules.



Accommodation Charges – ₹ 2,31,100 per annum.

Other Allied Service Charges – ₹ 1,24,900 per annum. (Other Allied Services including but not limited to Food, Laundry, Security Services, Housekeeping Charges, Electricity etc.)

Admission Procedure

Applicants for the B.A. (Hons.) PPE can apply direct through our online admission form available at our website. Kindly scan QR code / follow URL to visit our admission page.



<https://jgu.edu.in/admissions/>



Scan for Admissions

Education Loans

Suggested Financial Institutions to apply for an education loan.



Scholarships

At O.P. Jindal Global University, scholarships are awarded on the basis of merit and means. Marks secured in the qualifying examination (Class 12 for UG students and graduation scores for PG students), entrance examination score, and faculty interview scores are parameters taken into consideration for the award of the scholarship. Extra-curricular achievements outside of the classroom are also given weightage.

FOR ADMISSION, CONTACT:

+91 74196 13586

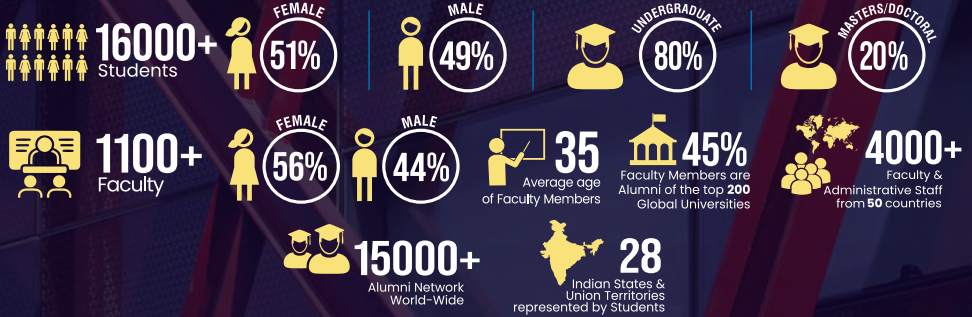
+91 74044 42088

✉ admissions@jgu.edu.in

🌐 www.jgu.edu.in



JGU *at a* GLANCE



12 SCHOOLS



50+

Programmes

30+ Undergraduate Programmes
20+ Postgraduate Programmes
✓ Doctoral Programme



Jindal Global Law School
India's First Global Law School



JINDAL GLOBAL BUSINESS SCHOOL
JGU's First Global Business School



Jindal School of International Affairs
India's First Global Policy School



Jindal School of Government and Public Policy
India's First Policy School



Jindal School of Liberal Arts & Humanities
India's First Department of Liberal Studies



Jindal School of Journalism & Communication
India's First Global Media School



Jindal School of Design & Architecture
India's First School of Design & Architecture



JINDAL SCHOOL OF BANKING & FINANCE
India's First Global Finance School



JINDAL SCHOOL OF ENVIRONMENT & SUSTAINABILITY
India's First Global Sustainability School



Jindal School of Psychology & Counselling
India's First Psychology School



JINDAL SCHOOL OF LANGUAGES & LITERATURE
India's First School of Language & Literature



JINDAL SCHOOL OF PUBLIC HEALTH & HUMAN DEVELOPMENT
India's First School of Public Health & Human Development

RESEARCH

6 Research & capacity building institutes



8500+
Publications



65+
Interdisciplinary research centres

JILDEE

JINDAL INSTITUTE OF MEDICAL & BIOMEDICAL SCIENCE



JINDAL INSTITUTE OF TECHNOLOGY



Jindal Institute of Management



JINDAL INSTITUTE OF DESIGN



JINDAL INSTITUTE OF HEALTH & HUMAN DEVELOPMENT

INTERNATIONAL COLLABORATIONS



575+

Collaborations with International Universities & Higher Education Institutions



10

Forms of Global Partnerships



80+

Countries & Regions



250+

Faculty & Student Exchange Collaborations



100+

Countries represented by Students

RANKINGS & RECOGNITIONS



BY SUBJECT 2025



Times Higher Education

CONFERRED THE STATUS OF AN
INSTITUTION OF EMINENCE
BY THE
MINISTRY OF EDUCATION
GOVERNMENT OF INDIA



O.P. JINDAL GLOBAL UNIVERSITY
INSTITUTION OF EXCELLENCE DEDICATED TO BE
A Private-Owned Promoting Public Service

📍 Sonipat - 131001, (NCR of Delhi)

JGU – An Initiative of Jindal Foundation

🌐 www.jgu.edu.in



©JINDALGLOBALUNI