



**O.P. JINDAL GLOBAL**  
INSTITUTION OF EMINENCE DEEMED TO BE  
**UNIVERSITY**  
*A Private University Promoting Public Service*



**Jindal School of Government  
and Public Policy**  
*India's First Public Policy School*

# JINDAL SCHOOL OF GOVERNMENT AND PUBLIC POLICY

# JGU

# O.P. JINDAL GLOBAL UNIVERSITY

O.P. Jindal Global University (JGU) is a non-profit, multi-disciplinary and research oriented university founded in 2009. JGU was established as a philanthropic initiative of its Founding Chancellor, Mr. Naveen Jindal in memory of his father, Mr. O.P. Jindal.

JGU has 16,000+ students, 1100+ full-time faculty members, and 2900+ administrative staff in its fully residential campus. JGU's twelve schools focus on Law, Business & Management, International Affairs, Public Policy, Liberal Arts & Humanities, Journalism, Design & Architecture, Banking & Finance, Environment & Sustainability, Psychology & Counselling, Languages & Literature and Public Health & Human Development. Over the last decade, JGU has grown into an institution that brings full-time faculty from 50+ countries in the world, students from 160+ countries and has collaborated with 600+ leading institutions in 80+ countries which makes the learning experience truly international.

JGU is ranked Number 1 in the world with the highest overall score amongst all universities and awarded 'Gold' by the Times Higher Education (THE) Online Learning Rankings 2024. JGU has been ranked as India's Number 1 Private University for three years in a row by the prestigious QS World University Rankings 2023. JGU has been recognised among the Top 150 universities globally under the age of 50 years by the QS Young University Rankings.

JGU has also been recognised in the Top 500 Universities as per the QS Graduate Employability Rankings 2022. The Jindal Global Law School has retained its No. 1 rank in India for seven consecutive years and is ranked Top 35 globally for Law by the QS World University Rankings by Subject 2026. Furthermore, JGU holds the distinction of being India's top university for Politics & International Studies and is ranked Top 90 in the world. JGU also holds the position as India's top private university for Business & Management Studies (among Top 200 in the world), Social Sciences & Management (Ranked Top 232 in the world), Arts & Humanities (Ranked Top 323 in the world), Economics & Econometrics (among Top 500 in the world) as per the QS World University Rankings by Subject 2026. JGU is ranked No.1 University for Law and No.2 University for Psychology in India by the prestigious Times Higher Education (THE) World University Rankings by Subject 2026. In 2025, Jindal Global Business School (JGBS) was awarded the prestigious Association to Advance Collegiate Schools of Business (AACSB) International Accreditation — an accreditation earned by only 6% of business schools worldwide. In 2020, JGU was recognised as an 'Institution of Eminence' by the Ministry of Education, Government of India.



# ABOUT

## JINDAL SCHOOL OF GOVERNMENT AND PUBLIC POLICY (JSGP)

Jindal School of Government and Public Policy (JSGP), one of the twelve schools in the University, engages with the contemporary policy environment, which demands new imaginations, methodologies, and revitalized ethics. Through national and international collaborations, JSGP promotes interdisciplinary studies, teaching and research programmes, and strives to develop a comparative perspective on local and global policy issues.

JSGP offers students a well-rounded education and exposes them to the field in both rural and urban contexts and the institutional mechanisms of governance. JSGP regularly invites academicians, activists, senior officials, politicians, NGO-workers, policymakers from the United Nations (UN) and other international organizations to deliver lectures and interact with students and faculty members.



# Message from the Dean



## PROF. R. SUDARSHAN

*M.A. (Delhi School of Economics, University of Delhi);  
M.Phil. (University of Oxford)*

### DEAN

Jindal School of Government &  
Public Policy (JSGP)

The Jindal School of Government and Public Policy (JSGP) has pioneered public policy and economics education since 2012.

Until recently, public policy education was the preserve of people serving governments at the senior policymaking level. However, just as war is too important to be left only to generals, public policy is too important to be left only to officials serving governments and their political masters.

People from all walks of life should be more knowledgeable about public policy, especially students who aspire to improve the world. Many students (undergraduates and professionals) in India and other developing countries wish to study public policy. Public policy education is an idea whose time has come.

JSGP's undergraduate, postgraduate and doctoral programmes are genuinely interdisciplinary, drawing insights from multiple disciplines, especially economics.

JSGP students can opt to join the public policy or the economics stream of studies. Common to all JSGP students is their desire to make a difference in the world, a passion for problem-solving, and a keen interest in the political process. JSGP students want to be the change-makers in society, the ones who help craft solutions to such problems as poverty, inequality, unemployment, sustainable development, and climate change.

The opportunities for JSGP students to show leadership and deploy their knowledge and skills in rewarding careers are steadily growing. For example, students from JSGP public policy and economics streams are well-equipped to join governments (through the civil service selection process or lateral entry). In addition, many top corporations have established public policy positions that JSGP students can best fill, having an interdisciplinary education, compared to others specialised in single disciplines.

Corporate social responsibility (CSR) ventures afford JSGP students rewarding employment to increase the supply of public goods and merit goods. NGOs working in partnership with governments and civil society organisations that advocate policies to serve the public interest can provide meaningful careers to our students.

International institutions, including the United Nations and philanthropic foundations, committed to realising the Sustainable Development Goals, will seek out students educated at JSGP. And for those students who have an aptitude for research and teaching, a growing number of think tanks and universities can provide meaningful employment.

JSGP students manage many clubs and engage in fun-filled extra-curricular activities, including the JSGP Tedx, Policy Club, Arthaniti and Youthopia.

JSGP is research-oriented and has faculty with impeccable qualifications from first-rate universities worldwide. JSGP's research centres work in innovative areas such as complexity economics, applied spirituality, measuring the efficacy of public policies and improving justice delivery. In addition, the Policy Action Laboratory specialises in field-based research and learning.

JSGP students can work with faculty on research projects and assist in teaching, earning significant stipends to complement scholarship tuition waivers and support their education. In addition, they can count on exciting internships during inter-semester breaks that provide experiential learning. Finally, some postgraduate students who take up capstone projects in their final year can expect to continue working in their client institutions after graduation.

JSGP was instrumental in legally registering the Association for Public Policy Education (APPE) to provide a platform for everyone in India and abroad to share their experience with innovations in public policy pedagogy. Furthermore, JSGP is committed to refining the teaching of Economics, creatively combining orthodox and heterodox approaches.

I close my invitation to prospective students to join JSGP by remarking that humility, not boastfulness, is a virtue we cherish. CS Lewis, a British scholar who taught English literature at both Oxford and Cambridge, wrote: "Humility is not thinking less of yourself, but thinking of yourself less." In JSGP, we practice humility in learning. We spend less time relying on what we already know and proportionally more time exploring new concepts and ideas.

# INTRODUCTION

## TO UG & PG PROGRAMME

**B.A. (HONS.)/ B.SC. (HONS.) ECONOMICS** ..... 06-10



**B.A. PHILOSOPHY, POLITICS AND ECONOMICS** ..... 11-15

(OFFERED BY JINDAL SCHOOL OF GOVERNMENT & PUBLIC POLICY +  
JINDAL SCHOOL OF LIBERAL ARTS AND HUMANITIES)



**M.A. PUBLIC POLICY** ..... 16-21

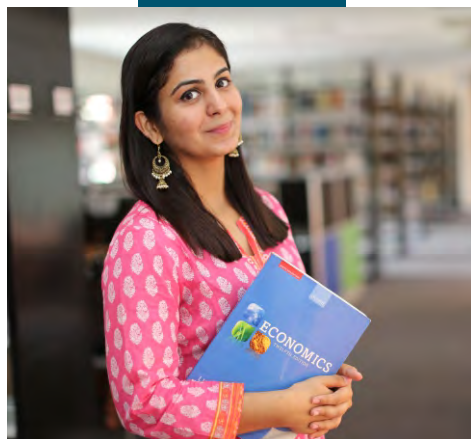
## INTRODUCTION

# B.A. (HONS.) / B.SC. (HONS.) ECONOMICS

The JSGP undergraduate degrees in Economics are versatile and can lead to various employment choices while providing a student with vital skills for understanding and influencing economic outcomes. Programme graduates would be able to understand the interplay between economy, society and politics; evaluate economic problems through the lens of a global perspective while taking a local approach to solving them

Students can pursue either a B.A. (Hons) or a B.Sc. (Hons) as a four-year degree programme with or without research. The first year is foundational for both programmes and is the same for students from both streams. Students in their second year take some common courses and remaining courses from their respective streams. During the next two years, students read a mix of core and elective courses related to their chosen programmes. Both programmes offer Honours with Research as per the National Education Policy 2020.

A Bachelor of Science (B.Sc.) in Economics has a bit more emphasis on understanding economics analytically, mathematically, and empirically, while a Bachelor of Arts (B.A.) in Economics provides a bit more practical, and analytical knowledge and cutting-edge tools that allow students to focus on global issues related to economics, business and policymaking. Both programmes provide a firm foundation in economic theories, econometric models, and ideas, enabling students to analyse and comprehend economic data and trends. Graduates of both B.Sc./B.A. work in finance, banking, consulting, government, research, think tanks, and other fields.



# WHY STUDY

B.A. (HONS.)/ B.SC. (HONS.) ECONOMICS @JSGP

The Bachelor's degree programme in Economics (Honours) provides theoretical and practical knowledge that makes accurate analysis of the economic situation possible. JSGP Economics graduates must be able to understand the interplay between the economy and society; to consider economic problems from a global perspective and take a local approach to solve them; to make connections between an economic system's different components; to gauge the implications of decisions related to economic policy; and to respond to the economic problems arising from society in general and the different units that interact therein (e.g. institutions, private companies and sectors of the economy).

“ *Political Economy or Economics is a study of mankind in the ordinary business of life; it examines that part of individual and social action which is most closely connected with the attainment and with the use of material requisites of well-being* ”

Alfred Marshall

01

Understand the interrelation between the economy and society.

02

To consider economic problems from a global perspective and take a local approach to solve them.

03

To make connections between different components of an economic system.

04

To gauge the implications of decisions related to economic policy.

05

To respond to the economic problems arising from society in general and the different units that interact therein.



# I COURSE STRUCTURE

The Jindal School of Government and Public Policy's flagship undergraduate program in Economics is the B.A./B.Sc. in Economics. The program's goal is to develop strong foundations in theoretical and empirical economics and the ability to work with real-world data sets. The curriculum comprises twenty-seven core courses and four general electives. In addition, the students will either do fifteen electives or twelve electives and an undergraduate research paper. The core courses expose students to current economic theory, application and theoretical underpinnings of empirical economics, and an understanding of data science. The electives allow students to specialise in varied contemporary areas of theoretical and applied economics to suit their interests and career goals. The research is a distinguishing component of the curriculum, as it develops the ability to do independent research. This is to be completed in the eighth semester. Students also have the option of doing a minor\* (twenty-four credits worth of coursework) offered by any of the nine schools of OPJGU that offer a minor, including JSJP. The courses taken to complete a minor will substitute for six electives.

Each (core and elective) course is worth four credits. The research paper is worth twelve credits. Students will be required to earn at least 192 credits to graduate from the program (including 8 credits from 4 internships, each worth 2 credits). The program structure is as follows.

## B.SC./B.A. (HONS) ECONOMICS (4 YEAR)

### SEMESTER I

Credit 6\*4=24

- Introduction to Mathematics for Economics
- Principles of Economics
- Introduction to Statistics
- Influential Ideas in the Evolution of Economics
- Academic Writing
- General Elective - I

### SEMESTER III

Credit 6\*4=24

- Intermediate Microeconomics
- Introduction to Macroeconomics
- Introduction to Econometrics
- Advanced Mathematics for Economics (Bsc) *or*
- Politics of Development (BA)
- General Elective-III
- Minor Course I / Discipline Elective

### SEMESTER II

Credit 6\*4=24

- Intermediate Mathematics for Economics
- Introduction to Microeconomics
- Intermediate Statistics
- Computational Techniques for Economics using Python
- Environmental Studies
- General Elective - II

### SEMESTER IV

Credit 6\*4=24

- Public Economics
- Intermediate Macroeconomics
- Introduction to Game Theory
- Data Analysis & Survey Design
- General Elective-IV
- Minor Course II / Discipline Elective

## SEMESTER V

Credit 6\*4=24

- Development Economics
- International Trade
- Intermediate Econometrics (Bsc) *or*
- Applied Economic Analysis (BA)
- Discipline Elective
- Minor Course III / Discipline Elective
- Non-JSGP Elective / Discipline Elective

## SEMESTER VI

Credit 6\*4=24

- Indian Economy
- Money & Banking
- Qualitative Research Methods
- Discipline Elective
- Minor Course IV / Discipline Elective
- Non-JSGP Elective / Discipline Elective

**JSGP REQUIREMENT FOR B.SC. & B.A. IN ECONOMICS (3 YEAR): 150 CREDITS INCLUDING 96 CREDITS FROM THE CORE COURSES, 48 CREDITS FROM ELECTIVE COURSES AND THREE COMPULSORY INTERNSHIPS OF 2 CREDITS EACH.**

## SEMESTER VII

Credit 5\*4=20

- Advanced Microeconomic Theory
- Open Economy Macroeconomics
- Dissertation Workshop / Discipline Elective
- Non-JSGP Elective / Discipline Elective
- Minor Course V / Discipline Elective

## SEMESTER VIII

Credit 5\*4=20

- Advanced Macroeconomic Theory
- Discipline Elective
- Discipline Elective *or* Research Paper
- Discipline Elective
- Minor Course VI / Discipline Elective

**JSGP REQUIREMENT FOR B.SC./B.A. ECONOMICS WITH (HONS., WITH OR WITHOUT RESEARCH): 192 CREDITS, INCLUDING 108 CREDITS FROM THE CORE COURSES, 76 CREDITS FROM ELECTIVE COURSES AND FOUR COMPULSORY INTERNSHIPS OF 2 CREDITS EACH.**

## JSGP ELECTIVES OPEN TO B.A. (HONS.) / B.SC. (HONS.) ECONOMICS STUDENTS:

### DISCIPLINE SPECIFIC ELECTIVES

- |  |                                 |                                     |
|--|---------------------------------|-------------------------------------|
| ■ Intermediate Game Theory                 | ■ Environmental Economics       | ■ Econometrics of Impact Evaluation |
| ■ Comparative Political Economy of Welfare | ■ Financial Economics           | ■ Issues in International Economics |
| ■ Behavioural Economics                    | ■ Equity and Fairness           | ■ Data Analysis & Visualization     |
| ■ Health Economics                         | ■ Advanced Statistical Analysis | ■ Indian Agriculture                |
| ■ Experimental Economics                   | ■ Law and Economics             | ■ Data Science with Python I        |
| ■ Gender and Economics                     | ■ Advanced Econometrics         | ■ Public Finance                    |
| ■ Network Economics                        | ■ Political Economy             | ■ Data Science with Python II       |
| ■ AI in Economics and Public Policy        | ■ Time Series Analysis          | ■ Labour Economics & Migration      |
| ■ Poverty and Inequality                   | ■ Economic History of India     | ■ Geographic Information System     |
| ■ Industrial Economics                     | ■ Spatial Econometrics          |                                     |
|  | ■ Economic Systems              |                                     |

### GENERAL ELECTIVE COURSES

- |   |                                 |  |
|---|---------------------------------|--|
| ■ State, Politics & Policy Making           | ■ Development & Governance      | ■ Education Policy   |
| ■ Society & Public Policy                   | ■ Law, Policy & Justice         | ■ Health Policy  |
| ■ Gender & Development                      | ■ Sustainable Development Goals | ■ Environmental law and policy in India                        |
| ■ Democracy, Participation & Accountability | ■ Ethics                        | ■ Environmental Health: Policy and Practice                    |
| ■ Policy-Making Institutions in India       | ■ International Policy Regimes  | ■ Cities & Climate Change: Risk, Resilience and Sustainability |
| ■ Political Thought                         | ■ Rural Governance              |  |
| ■ Programme Evaluation                      | ■ Urban Governance              |  |
|   | ■ Environmental Policy          |  |

*Note: The list of discipline and general electives is indicative and subject to revision.*

\*This list of minors offered by different schools (JGU) are as below;

SCHOOL	ELECTIVES OFFERED	SCHOOL	ELECTIVES OFFERED
JSIA	International Affairs and Diplomacy	JSDA	(1) Urban Studies (2) Interior Studies (3) Architectural Studies
JSLI	English	JSES	Environment & Sustainability
JSBF	Banking & Finance	JSPC	Psychology
JSLH	(1) Sociology (2) Visual Arts	JSJC	Media & Communication

# PROGRAMME SPECIFICATIONS

<b>Programme</b>	B.A. (Hons.)/ B.Sc. (Hons.) Economics		
<b>Course Duration</b>	4 Years		
<b>Minimum Eligibility for Application</b>	<p>Successful completion of the <b>Class 12</b> examination in any Stream from an Indian or Recognized international board (CBSE   ISC   State Board   Cambridge   IB   NIOS).</p> <p>IB students must secure a diploma with minimum <b>24 credits</b> with minimum 3 HL and 3 SL subjects.</p> <p>For students enrolled in the Cambridge Board, applicants must appear for a minimum of 3 subjects at the <b>A-level</b> to be eligible to apply to the undergraduate programmes.</p>		
<b>Admission Criteria</b>	Applicants are selected through a holistic admission process conducted over three rounds based on a personal statement, supplemental application, X and XII grade marks, Personal Interview, and Jindal Scholastic Aptitude Test (JSAT) score or equivalent (SAT/ACT/CUET).		
<b>Accepted Standardised Tests</b>	JSAT / SAT / ACT		
<b>Application Fee</b>	₹ 2,500/- (Applicable for both UG programmes of JSGP)		
<b>Tuition Fee</b>	₹ 4,00,000/- per annum*	<b>Refundable Security Deposit</b>	₹ 50,000/-**

\*The Tuition fee, Accommodation charges and other allied service charges are subject to an annual increase of upto 10%.

\*\*Fully refundable Security deposit of Rs. 50,000 shall be collected at the time of admission as per university rules.

**Accommodation Charges** – ₹ 2,31,100 per annum.

**Other Allied Service Charges** – ₹ 1,24,900 per annum. (Other Allied Services including but not limited to Food, Laundry, Security Services, Housekeeping Charges, Electricity etc.)

Applicants for the UG programmes at JSGP can apply directly through our online admission form available at our website. Kindly scan QR code / follow URL to visit our admission page.



Scan for Admissions



<https://admissions.jgu.edu.in/jsgp-ug>

## INTRODUCTION

# B.A.(HONS.) PHILOSOPHY, POLITICS AND ECONOMICS (PPE)

The Bachelor of Arts in Philosophy, Politics and Economics (PPE) is a four-year interdisciplinary programme designed for young thinkers interested in having a rigorous understanding of all three disciplines. It is aimed at understanding the big questions of what underpins the foundations of economics, politics and philosophy as independent disciplines and develop a comprehensive understanding of their inter-play to equip the student to make an impactful change in society. The programme will develop the student's capacity to identify and analyse increasingly complex real-world problems that disciplinary straightjackets cannot resolve.

Based out of two schools at the O. P. Jindal Global University, the Jindal School of Government and Public Policy (JSGP) and the Jindal School of Liberal Arts and Humanities (JSLH), the programme offers an opportunity to have the best of what both schools have to offer and develop a critical perspective on issues of the contemporary world from a Global South standpoint. The programme capitalises on the multi-disciplinary expertise of both the Schools and is aimed at students interested in politics, law, academia, the development sector and non-governmental organisations, diplomacy, governance and social entrepreneurship.

Combining the three disciplines allows students to understand the ethical foundations of human behaviour and develop critical thinking and analytical abilities, learning the necessary skills to work with complex data and develop a nuanced understanding of how modern society operates. The programme will focus on contemporary issues relevant to all three disciplines in order to develop an interrogative mindset that looks at issues in modern society and politics from more than one lens and through the spirit of a critical dialogue.



# WHY STUDY

B.A.(HONS.) PHILOSOPHY, POLITICS  
AND ECONOMICS (PPE)

“A stepping stone to exciting careers that require proficiency in PPE”

Today we live in a world where our future is going to be shaped by institutions – both economic and political. It is important that students are equipped, as they step into that future that they understand the underpinnings of how different institutions work. It is essential to understand the foundational roots of how society, in all its complexity works and how power, morality, ethics are all essential ingredients of this complexity which cannot be grasped through a singular lens.

At its core, the discipline of modern economics has its origins in moral philosophy and political theory. Similarly, the boundaries between politics and economics are fluid, and it is difficult to study politics without understanding economic structures or the philosophical intentions between different types of power structures at the helm of modern decision making. If the students of today want to be

meaningful contributors to shaping the world, they should know and appreciate how economic and political decisions are made as well as understand what underpins the ethical or normative debates behind these decisions that impact us in our lives. As we move into an increasingly complex future, philosophy similarly enables us to be able to ask ethical questions which helps us direct the nature of our future institutions, inform our decision making and shape the future of our world as it ought to be.

The PPE programme offers students a distinctive opportunity to gain a holistic understanding of all three disciplines, one that goes beyond the scope of a traditional undergraduate economics/politics or philosophy course. This approach equips students to apply theoretical concepts more effectively in real-world situations as well as provides them with more transferable skills that can use to resolve real life problems.



# COURSE STRUCTURE

Students are required to complete forty-six four-credit courses over four years of study, comprising core subjects, research methods, and electives. In addition, they must undertake four internships during the programme.

The curriculum builds students' disciplinary foundations through seven core courses across the three disciplines, taught from an interdisciplinary perspective to highlight their interplay. A distinctive feature of the programme is a set of four interdisciplinary courses: Intersections of Philosophy, Politics and Economics, Social Dynamics and Institutions, Intersections: Big Ideas, and Intersections: Experiences from the Field, which enable students to critically engage with contemporary questions and pressing global challenges.

Alongside the core courses, students take five research methods courses designed to strengthen transferable analytical skills: Core Concepts in Logical Analysis, Ways of Knowing, Introduction to Statistics and Data Analysis, Econometrics: Theory and Application, and Qualitative Methods. From the second year onwards, these are complemented by a wide range of disciplinary and cross-disciplinary electives, allowing students to pursue their academic interests in depth.

A key aim of the programme is to train students in high-quality research and critical thinking, supported by a balanced mix of core and elective courses. In the fourth year, students also have the option of writing a faculty-supervised dissertation.

The PPE programme integrates theory and practice, equipping students both for advanced studies and for careers beyond academia, with the skills and experiences needed to excel in diverse fields. A detailed breakdown of courses is provided below.

## SEMESTER I

- The Intersections of Philosophy, Politics and Economics
- Essential Toolkit for Economics
- Foundational Concepts in Political Theory
- Foundational Questions in Philosophy
- Economy and Society
- Academic Writing

## SEMESTER II

- Core Concepts in Logical Analysis
- Indian Political System
- Introduction to Ethics
- State and Governance
- Influential Ideas in Economics
- Ways of Knowing

## SEMESTER III

- Modern Western Philosophy
- Political Processes in India
- Macroeconomics: Understanding Economic Aggregates
- Microeconomics: Consumption and Production
- Statistics and Data Analysis
- Disciplinary Elective

## SEMESTER V

- Macroeconomics: Dynamics of the Global Economy
- Qualitative Methods
- Social Epistemology
- Discipline Elective
- Discipline Elective
- Elective

## SEMESTER VII

- Philosophical Perspectives from the Global South
- Indian Economy: Trends and Challenges
- Elective/ Dissertation Workshop
- Elective
- Elective

## SEMESTER IV

- Introduction to Indian Philosophy
- Microeconomics: Dynamics of Markets
- Intersections: Big Ideas
- Critical Perspectives on Politics
- Econometrics: Theory and Application
- Disciplinary Elective

## SEMESTER VI

- Philosophy of Language
- Political Economy of Development
- Intersections: Experiences from the Field
- Discipline Elective
- Discipline Elective
- Elective

## SEMESTER VIII

- Politics of Global Governance
- Elective
- Dissertation/3 electives

## Disciplinary Electives

Economics	Philosophy	Politics
Game Theory	Cultural Epistemology (East and West)	Comparative Politics: Cold War and after-political economy and comparative politics
Development Economics	Cultural Ideas of Cosmopolitanism (East and West)	Critical concepts and emerging changes in contemporary IR: New security challenges
Indian Economics	Cultural Notions of Self (East and West)	Critical Theory
Money and Banking	Cultural Philosophy of Religion (East and West)	Nations and Nationalism
Politics of Public Policy	Philosophy, Ethics and Technology	Politics and Practice: Society and political recognition in the modern world

# PROGRAMME SPECIFICATIONS

<b>Programme</b>	B.A. (Hons.) Philosophy, Politics and Economics (PPE)		
<b>Course Duration</b>	4 Years		
<b>Minimum Eligibility for Application</b>	<p>Successful completion of the <b>Class 12</b> examination in any Stream from an Indian or Recognized international board (CBSE   ISC   State Board   Cambridge   IB   NIOS).</p> <p>IB students must secure a diploma with minimum <b>24 credits</b> with minimum 3 HL and 3 SL subjects.</p> <p>For students enrolled in the Cambridge Board, applicants must appear for a minimum of 3 subjects at the <b>A-level</b> to be eligible to apply to the undergraduate programmes.</p>		
<b>Admission Criteria</b>	Applicants are selected through a holistic admission process conducted over three rounds based on a personal statement, supplemental application, X and XII grade marks, Personal Interview, and Jindal Scholastic Aptitude Test (JSAT) score or equivalent (SAT/ACT/CUET).		
<b>Accepted Standardised Tests</b>	JSAT / SAT / ACT / CUET		
<b>Application Fee</b>	₹ 2,500/- (Applicable for both UG programmes of JSGP)		
<b>Tuition Fee</b>	₹ 4,00,000/- per annum*	<b>Refundable Security Deposit</b>	₹ 50,000/-**

\*The Tuition fee, Accommodation charges and other allied service charges are subject to an annual increase of upto 10%.

\*\*Fully refundable Security deposit of Rs. 50,000 shall be collected at the time of admission as per university rules.

**Accommodation Charges** – ₹ 2,31,100 per annum.

**Other Allied Service Charges** – ₹ 1,24,900 per annum. (Other Allied Services including but not limited to Food, Laundry, Security Services, Housekeeping Charges, Electricity etc.)

Applicants for the UG programmes at JSGP can apply directly through our online admission form available at our website. Kindly scan QR code / follow URL to visit our admission page.



Scan for Admissions



<https://admissions.jgu.edu.in/jsgp-ug>



## INTRODUCTION

# M.A. PUBLIC POLICY

The Jindal School of Government and Public Policy at O.P. Jindal Global University is proud to announce the launch of a new one-year **Master of Arts in Public Policy (MAPP)** programme, beginning in Fall 2026. This programme is designed for recent graduates and early-career professionals who seek to build expertise in public policy research, governance, programme evaluation, and institutional reform.

In an era defined by rapid technological advancement, global interconnectedness, and pressing social and environmental issues, the need for skilled and ethical policy leaders has never been greater. The MAPP programme at JSGP is built on the belief that effective public policy requires a deep understanding of evidence-based research, a commitment to equitable governance, and the ability to navigate the intricate legal and financial landscapes of policy implementation. Our programme is tailored for individuals seeking to make a significant impact in government, non-profit organisations, international agencies, and the private sector.

The programme provides students with the theoretical foundations and applied competencies required for effective public policy formulation, analysis, and evaluation. It combines interdisciplinary instruction in economics, law, political theory, and data analysis with field exposure and hands-on research training. All students undertake a mandatory internship (2 credits) during the academic year. In the final two quarters, students can pursue either a dissertation or additional



electives, while those interested in more extensive applied work may opt for a six-month capstone project.

This programme is suited for those interested in working in policy design, development programmes, advocacy, consulting, or further academic study.

# WHY STUDY

## M.A. PUBLIC POLICY @JSGP

“A stepping stone to exciting careers in public life”

JSGP was the first public policy school in India to offer a 1-years full-time M.A. in Public Policy programme. The well-established M.A. Public Policy programme opens doors to the exciting world of public life. The discipline of Public Policy studies the way governments play a role in ensuring human security and human development, promoting the common good and upholding the public interest. JSGP introduces students to the challenging and increasingly complex policy environment and trains students to solve practical policy problems and find solutions conducive to the public good.

Students benefit from the research-intensive environment of the university, which has established several research centres. Faculty members are actively engaged in research within and outside the university. JGU has over 1000 full-time faculty members and nearly 10,000 students. We have an extensive academic network and collaborative projects with reputed universities, including Oxford, Cambridge, Cornell, Harvard, Indiana, and Yale.

Our classes in New Delhi, the capital city of the country, allows students to interact with policymakers and implementers within the government, as well as with a host of experts from academia, NGOs, and industry. Our internship programme allows students to gain first-hand experience in the development and policy sectors. Most of our students find jobs in public and private policy institutions before or immediately after graduating from the programme.



# CURRICULUM

“Igniting young minds from across the world”

The 66-credit Master of Arts in Public Policy is structured across four intensive quarters, offering a balanced and sequential progression from foundational knowledge to specialized application, ensuring a balance of foundational knowledge, research skill-building, and practical application.

Each quarter has 8 weeks of teaching, followed by revision and assessments at the end of the quarter in the 9th and 10th weeks. Each quarter has four courses of four credits each. Each course will have three two-hour lectures and an office hour of 1.5 hours. In addition, students have to complete a compulsory 2 credit internship.

## 01 M.A. PUBLIC POLICY COURSE STRUCTURE

### QUARTER I

Credit 4\*4=16

- Introduction to Public Policy
- Microeconomics for Public Policy
- Social Theories for Public Policy
- Research Design and Writing

### QUARTER III

Credit 4\*4=16

- Survey Design and Field Research
- Law and Public Policy
- Elective I
- Elective II *or* Dissertation

### QUARTER II

Credit 4\*4=16

- Qualitative Research Methods
- Macroeconomics for Public Policy
- State, Governance and Public Policy
- Statistics and Quantitative Analysis

### QUARTER IV

Credit 4\*4=16

- Program Design and Evaluation
- Public Finance
- Elective III
- Elective IV *or* Dissertation

**Internship (2 Credits)** : All students must complete at least one internship during the academic year.

**Students from 3-year undergraduate programmes:**

Students who have completed a 3-year undergraduate programme of 120 credits must complete an additional 20 credits by taking additional courses.

## 02 ELECTIVES

- Narrative Public Policy
- Comparative Health Policy and Systems
- Sustainable Food, Water and Energy governance
- Politics and Development in India
- Thinking in Systems: A Strategy for Sustainable
- Development Policy
- GIS for policy analysis
- Legal Empowerment of the poor
- Experiencing the Rural Economy
- Data systems in India
- Introduction to Health Economics
- International Political Economy
- Political Economy of Agriculture
- Education Policy in India: Frameworks, Institutions and Processes
- Urban Natures
- Science and Technology Policy
- Urban Land, Housing and Infrastructure
- Growth, Technological Change and Inequality
- Statistical Analysis using R
- Public Administration
- International Organizations and Policy Regimes
- Data Analysis & Visualization
- Ethics in Public Policy
- Applied Econometrics I
- Applied Econometrics II
- Urban Governance from Practitioners Perspective

*\*Not all electives may be available every year.*

## 03 OBJECTIVES

- 1 Applying multidisciplinary knowledge and understanding of the context in policy formulation and decision making.
- 2 Having an ability to undertake evidence-based policy analysis, implementation, and assessment.
- 3 Using the theoretical underpinnings of public policy to inform the practical applications.
- 4 Developing expertise in specific areas of public policy.
- 5 Building skill-based competencies to support a career as a policy maker and a leader

## CAPSTONE

Students seeking to further enhance their expertise and gain hands-on experience in public policy can opt for a 6-month capstone extension following the completion of the programme coursework. This culminates in a comprehensive project that tackles real-world policy challenges in collaboration with a partner organisation.



*Priyam Aggarwalla, Ronit Hazarika, Dean R. Sudarshan, Ayush Singhal and Sonam Tsering on University Day Awards 2018.*

## CAREER OUTCOMES & PATHWAYS

The MAPP is designed to prepare students for a broad range of careers at the intersection of public affairs, governance, and development. The skill set acquired will allow graduates to pursue roles such as:

- Policy Analysts and Advisors in government or intergovernmental agencies
- Research Associates in think tanks and academic institutions
- Development Consultants with multilateral organizations and NGOs
- Programme Managers in public health, education, urban development, or climate policy
- Data Analysts and Field Researchers for impact evaluations and policy design
- Candidates for doctoral programmes in public policy, development studies, or political science

# KEY FEATURES



## **Integrated Training**

Core courses cover the theory and practice of public policy, economics, research methodology, law, and evaluation.



## **Applied Learning**

Students gain experience in data collection, field research, and policy evaluation through workshops, surveys, and internships.



## **Capstone Project Option**

For those looking to go deeper, the capstone project option offers a chance to work on a real-world project over six months.



## **Mentorship and Faculty Guidance**

Gain insights from both academic scholars and seasoned policy practitioners. Students benefit from close faculty mentorship, including dedicated guidance for their dissertation project.

## **RESPONDING TO CONTEMPORARY POLICY CHALLENGES**

Today's policy professionals must navigate a rapidly evolving world—marked by digital disruption, climate change, inequality, and institutional complexity. The MAPP curriculum has been designed to train students in the critical tools and conceptual frameworks needed to address such challenges. Whether working on gender-inclusive governance, rural employment, urban resilience, or digital transformation, our graduates will be equipped to formulate policy responses that are analytically rigorous and socially responsive.



# PROGRAMME SPECIFICATIONS

<b>Programme</b>	M.A. Public Policy
<b>Course Duration</b>	1 Year
<b>Eligibility</b>	Successful completion of Bachelor's degree in any stream from a recognized university in India or abroad. Please note: Students with an International Bachelor's degree, must submit an equivalency certificate from the Association of Indian Universities (AIU).
<b>Selection Criteria</b>	Take the online Public Policy Entrance Test (PPET) on the selected date followed by a personal interview (Online)
<b>Application Fee</b>	₹ 1,000/- (Applicable for PG programmes of JSGP)
<b>Tuition Fee</b>	₹ 4,00,000/- per annum* <b>Refundable Security Deposit</b> ₹ 50,000/-**

\*\*Fully refundable Security deposit of Rs. 50,000 shall be collected at the time of admission as per university rules.

## Classes to be held in JGU off-campus centre in New Delhi

Applicants for the PG programmes at JSGP can apply direct through our online admission form available at our website. Kindly scan QR code / follow URL to visit our admission page.



<https://admissions.jgu.edu.in/jsgp-pg>



Scan for Admissions



# INTERNATIONAL PUBLIC POLICY ASSOCIATION (IPPA)

IPPA is a global network of public policy schools. JSGP is a member of IPPA since 2016 along with:



CIDE, Centro de Investigación y Docencia Económicas, Mexico



ENAP, Escola Nacional de Administração Pública, Brasília, Brasil



ENS Cachan / Université Paris-Saclay, France



ENTPE - University of Lyon, France



FLACSO Ecuador, Facultad Latinoamericana de Ciencias Sociales Sede, Ecuador



ÉupolisLombardia, Milan, Italy



School of Public Policy and Management, Tsinghua University, Beijing, China



Lee Kuan Yew School of Public Policy, National University of Singapore, Singapore



Scuola Normale Superiore, Institute of Human and Social Sciences, Florence, Italy



Science Po Grenoble, France



University of Colorado Denver, USA



The KU Leuven Master in European Politics and Policies, Leuven, Belgium



University of Hong Kong, Faculty of Social Sciences, China

# INTERNATIONAL DEVELOPMENT & PUBLIC POLICY ALLIANCE (IDPPA)

JSGP is a member of the IDPPA – a network of global public policy schools– along with:



Fundacao Getulio Vargas (FGV), Rio de Janeiro, Brazil



Russian Academy of National Economy and Public Administration (RANEPa), Moscow, Russia



Beijing Normal University, School of Social Development and Public Policy (SSDPP), Beijing, China



American University in Cairo (AUC) School of Global Affairs and Public Policy, Cairo, Egypt



School of Government and Public Policy (SGPP), Jakarta, Indonesia



School of Public Leadership, Stellenbosch University, South Africa



Tun Abdul Razak University, Kuala Lumpur, Malaysia



Environment, Development, and Sustainability Program (EDS) Chulalongkorn University, Bangkok, Thailand

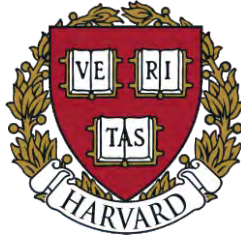


Istanbul Policy Center Sabanci University, Istanbul, Turkey

# INTERNATIONAL COLLABORATIONS



UNIVERSITY OF OXFORD



HARVARD UNIVERSITY



THE UNIVERSITY OF CALIFORNIA, BERKELEY



THE UNIVERSITY OF MELBOURNE



THE UNIVERSITY  
OF QUEENSLAND

THE UNIVERSITY OF QUEENSLAND



MONASH  
University

MONASH UNIVERSITY



UNIVERSITY OF  
LIVERPOOL

UNIVERSITY OF LIVERPOOL



UNIVERSITY OF  
BIRMINGHAM

UNIVERSITY OF BIRMINGHAM



University of  
St Andrews

UNIVERSITY OF ST ANDREWS

# JSGP-STUDY ABROAD PROGRAMMES



SEMESTER EXCHANGE



STUDY ABROAD PROGRAMME

**4**  **+**

**International Collaborations**



DUAL DEGREE PROGRAMME

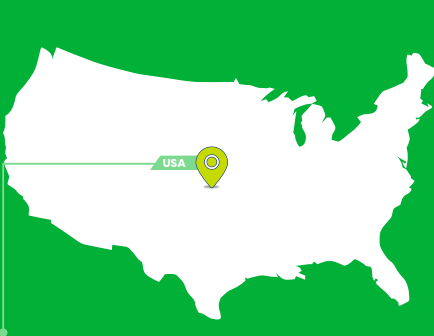


SUMMER SCHOOL



S.No.	Partner University	Country	Collaboration	Mobility Type
1	Harvard University	USA	JGU Wide	Summer School
2	University of Oxford	UK	JGU Wide	Summer School
3	Columbia University	USA	JGU Wide	Summer School
4	Instituto Superior de Derecho y Economia	Spain	JGU Wide	Summer School
5	University of Granada	Spain	JGU Wide	Summer School
6	Sciences Po	France	JGU Wide	Summer School
7	Universidad Torcuato Di Tella	Argentina	JGU Wide	Semester Exchange
8	University of Guelph	Canada	JGU Wide	Semester Exchange
9	University Leipzig	Germany	JSGP	Study Abroad
10	Julius-Maximilians-Universität Würzburg	Germany	JGU Wide	Semester Exchange
11	University of Göttingen	Germany	JSGP	Semester Exchange
12	Jenderal Soedirman University	Indonesia	JGU Wide	Semester Exchange
13	Airlangga University	Indonesia	JGU Wide	Semester Exchange
14	Universiti Teknologi Mara	Malaysia	JGU Wide	Semester Exchange
15	Instituto Tecnológico Autónomo de México (ITAM)	Mexico	JGU Wide	Semester Exchange
16	Comillas Pontificia Universidad	Spain	JGU Wide	Semester Exchange
17	Sabancı Üniversitesi	Turkey	JGU Wide	Semester Exchange
18	University of St. Andrews	UK	JGU Wide	Study Abroad
19	Queen Mary University of London	UK	JGU Wide	Dual Degree
20	KROK University	Ukraine	JGU Wide	Semester Exchange
21	University of California, Berkeley	USA	JGU Wide	Study Abroad
22	VNU Vietnam National University	Vietnam	JGU Wide	Semester Exchange
23	Università della Calabria	Italy	JSGP	Semester Exchange
24	Powiańska Szkoła Wyższa	Poland	JSGP	Erasmus+
25	St. Petersburg University	Russia	JSGP	Dual Degree
26	Universidad Antonio Nariño	Colombia	JSGP	Semester Exchange
27	Fundación Universitaria del Área Andina	Colombia	JSGP	Semester Exchange
28	Stellenbosch University	South Africa	JSGP	Semester Exchange
29	University of Pécs	Hungary	JSGP	Study Abroad & Summer School
30	FGV School of Public Policy	Brazil	JSGP	Semester Exchange
31	Liverpool John Moores University	UK	JSGP	Semester Exchange
32	University of Queensland	Australia	JSGP	Dual Degree
33	University of Melbourne	Australia	JSGP	General Agreement
34	Monash University	Australia	JSGP	Dual Degree
35	University of Birmingham	UK	JSGP	Semester Exchange
36	Macquarie University	Australia	JSGP	Semester Exchange
37	North South University	Bangladesh	JSGP	Semester Exchange
38	Beijing International Studies University (BISU)	China	JSGP	Semester Exchange
39	University of National and World Economy	Bulgaria	JSGP	Semester Exchange
40	China Three Gorges University	China	JSGP	Semester Exchange
41	Bradford University	UK	JSGP	Semester Exchange
42	Fenerbahçe University	Turkey	JSGP	Semester Exchange
43	University of Essex	UK	JSGP	Semester Exchange
44	Universidad Católica Oriente	Colombia	JGU Wide	Semester Exchange
45	Griffith University	Australia	JGU Wide	Study Abroad
46	University of Liverpool	UK	JGU Wide	Study Abroad

# CONTINENT WISE COLLABORATION



USA

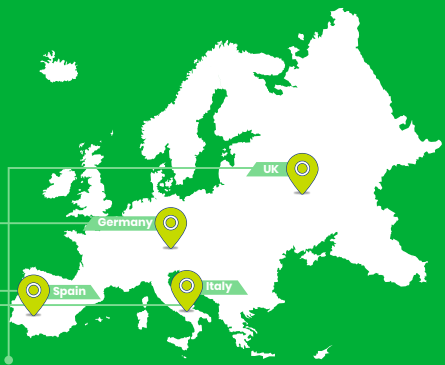
- Harvard University
- Columbia University
- University of California, Berkeley



Canada

- University of Guelph
- Universidad Antonio Nariño
- Fundación Universitaria del Área Andina
- Universidad Católica Oriente

Colombia



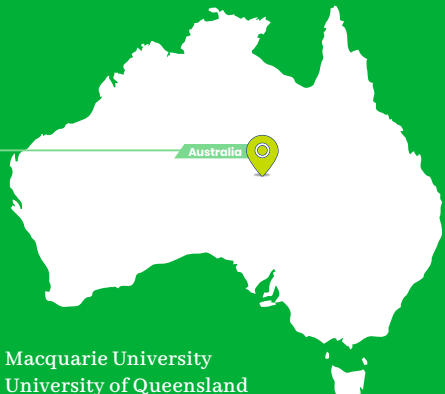
UK

Germany

Spain

Italy

- University of Oxford
- University of Essex
- Queen Mary University of London
- University of Birmingham
- University of Liverpool
- University of Bradford
- Liverpool John Moores University
- University of Gottingen
- Leipzig University
- Julius-Maximilians-Universität Würzburg
- Comillas Pontificia Universidad
- Instituto Superior de Derecho y Economía
- University of Granada
- Università della Calabria



Australia

- Macquarie University
- University of Queensland
- University of Melbourne
- Monash University
- Griffith University

# INTERNSHIPS & PLACEMENTS



## For UG programme

Internships are short periods of professional experience. Summer internships generally last from 4-8 weeks; students are encouraged to take an internship at the end of 1<sup>st</sup> and 2<sup>nd</sup> years. The Office of Career Services (OCS) helps students in securing internships. The analytical rigour and quantitative skills that the B.A. (Honours) programme develops, affords graduating students several opportunities: from academia to investment banking. Irrespective of the path they choose after their Bachelors; students with a Bachelor's Degree in Economics, on average, are some of the most sought after and highly paid. Some students have built on their internships and have taken up research positions at places like ICRIER. Some others have been offered jobs at organisations like Deloitte, PWC, Ernst & Young and the Economist.

## For PG programme

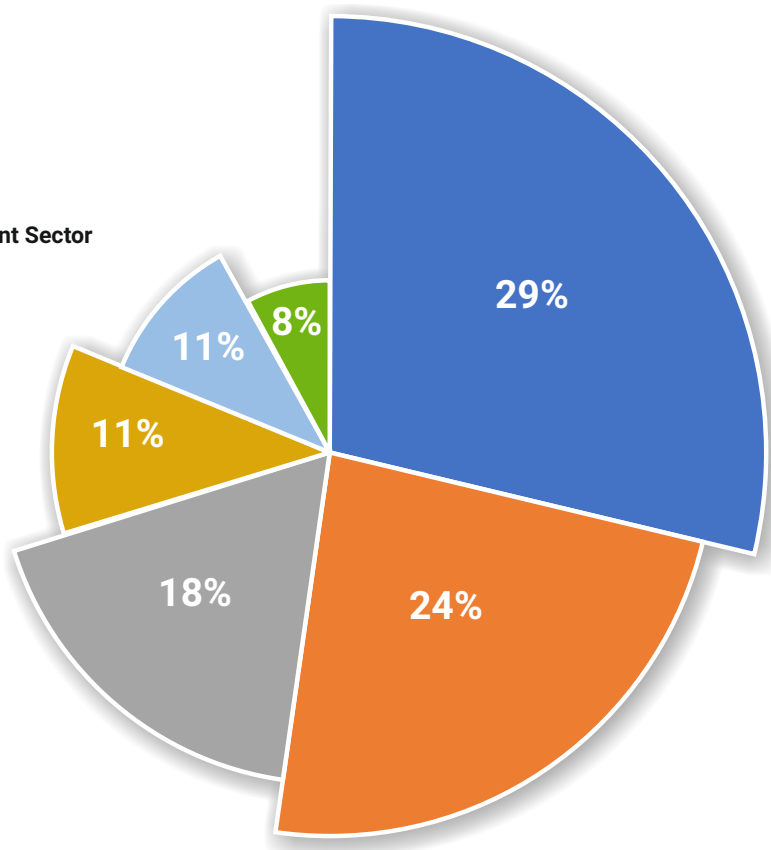
Placement Committee is a student-led placement committee, which is entrusted with the responsibility of facilitating internships and recruitment process for the School. The committee also organizes resume writing and LinkedIn profile creation workshops. It also invites potential recruiters to campus to interact with students



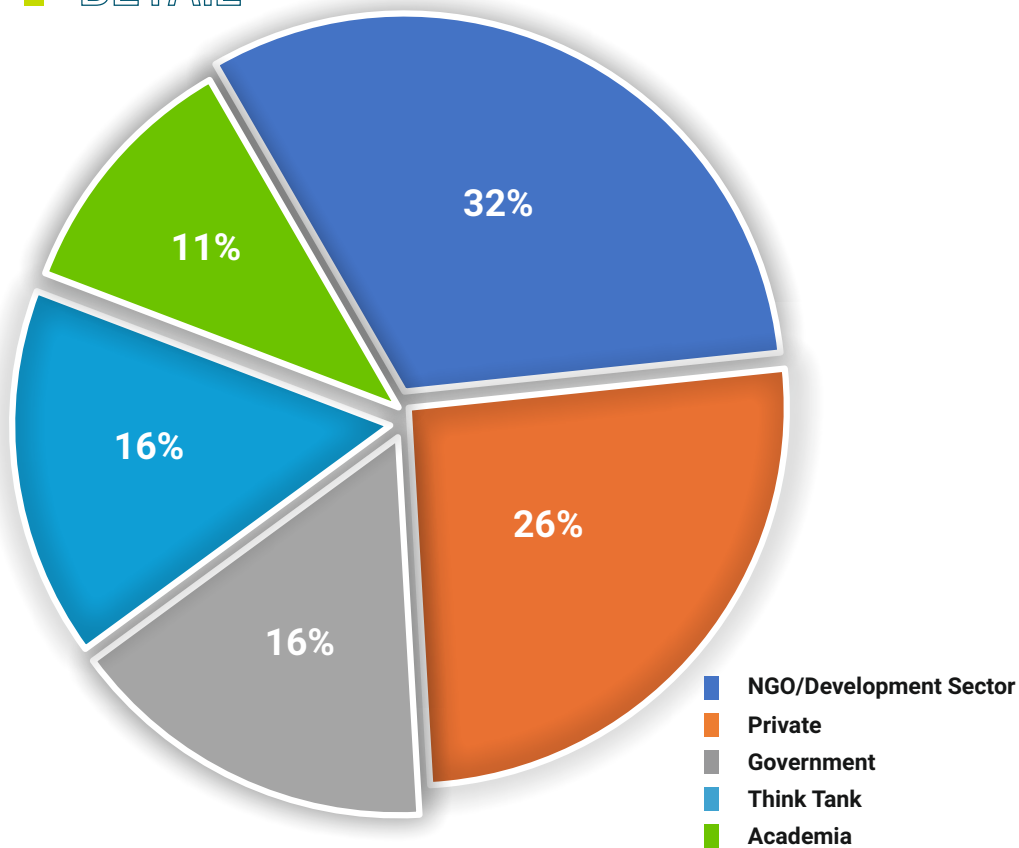
# INTERNSHIPS

## DETAIL

- Government
- NGO/Development Sector
- Private
- Think Tank
- Academia
- Political Party



# PLACEMENT DETAIL



# OPPORTUNITIES

**Deloitte.**



**DELIVERY**

**CDPP** CENTRE FOR DEVELOPMENT POLICY AND PRACTICE

**Hindustan Times**

**NDTV**

**MAX** Bupa HEALTH INSURANCE

**Kalam Foundation**  
Creating a Memorable Start

**WHERE  
JSGP STUDENTS  
HAVE INTERNEED & WORKING**

**Finlatics**  
ENABLING INSIGHTS



**HDFC**  
ASSET MANAGEMENT COMPANY LIMITED



**Capgemini**

**BLUE STAR**



**youth for seva**  
A Social Service by Youth

**Chegg**

**Edelweiss**  
Ideas create, values protect

**MANTHAN YUVA  
SANSTHAN**





# ASSOCIATION FOR PUBLIC POLICY EDUCATION (APPE)

Association for Public Policy Education (APPE) is an Association registered under the Haryana Registration and Regulation of Societies Act, 2012 in January 2021 with its registered office at the Jindal School of Government and Public Policy (JSGP), O.P. Jindal Global (Institution of Eminence Deemed to be) University, Sonapat. The JSGP took the lead in establishing such an Association for the development of the public policy discipline and practice by encouraging collaboration and partnerships between public policy scholars, and practitioners including the institutions involved in teaching, training, and research in public policy. The objective is to advance and strengthen the discipline and practice of public policy in India.



Association for  
Public Policy  
Education

## OFFICE BEARERS OF THE ASSOCIATION

**R. Sudarshan, (President),**

Dean, Jindal School of Government and Public Policy, OP Jindal Global University, Sonapat

**Sudhir Kumar Satpathy, (Vice President 1),**

Director, School of Public Health, KIIT University, Bhubaneswar

**Jyotsna Jha, (Vice President 2),**

Director, Centre for Budget and Policy Studies, Bengaluru

**Dhanuraj (Secretary),**

Chairperson, Centre for Public Policy Research, Cochin.

**Amir Ullah Khan, (Treasurer)**

Development Economist, Hyderabad

**Tanvir Aeijaz, (Member),**

Associate Professor, Delhi University, Delhi

**Ajay Pandey, (Member),**

Professor, Indian Institute of Management, Ahmedabad

**Madhushree Sekhar, (Member),**

Professor, Tata Institute of Social Sciences, Mumbai

## THE AIMS AND OBJECTIVES OF THE ASSOCIATION ARE AS FOLLOWS

- a) To advance and strengthen the discipline and practice of public policy in India by leveraging the strength of the public policy schools and institutions in India.
- b) To organize an annual public policy conference.
- c) To publish a bi-annual journal of public policy, occasional papers, newsletters, and books.
- d) To promote the academic exchange of students and faculty between the institutions of public policy in India and abroad.
- e) To foster experiential learning for students of public policy by facilitating internships, fellowships, research projects for students.
- f) To stimulate participation in the refining of public policy theory and practice in India, as well as in the activities of the Association of Public Policy Education (APPE)
- g) To support activities that foster Public Policy aspects and initiatives in India and abroad.

# STUDENT LED INITIATIVES



## SOCH

SOCH is a student-driven initiative at JSGP that organises regular screenings of documentaries and other films followed by discussions, on issues relating to politics, society and international relations. The objective of the club is to enable critical thinking on social issues and this initiative has resulted in a vibrant blog that showcases students' writings about issues and films discussed in SOCH.

► <https://sochjgu.wordpress.com/>

## POLICY CORNER

Policy Corner is an online writing space for the JSGP Student community. It was started by students to inculcate a culture of writing among the JSGP students. The main objective of the policy blog is to provide students a platform to discuss local, national and global policy issues with a wider audience. Right from its inception, Policy Corner has been a popular medium of debate and deliberation. It has published interesting, thought-provoking, and relevant content on policy and social issues.

► <https://policycornerblog.wordpress.com/>

## PUBLIC POLICY CLUB

Public Policy Club is an initiative where students apply and test their theoretical learnings on real-life problems. The Club organises activities that play a crucial part in understanding the real-life challenges by looking at social issues through the lens of governance, society, economy and culture. The Club also undertakes policy brief writing and supports fellow members to present papers at various conferences.

## ENACTUS

Enactus is the JGU chapter of a global network fostering socially responsible entrepreneurship is an initiative of JSGP students. Student members come up with business ideas, conduct market surveys, evaluate social impact, create sustainable business plans and compete with teams from all over the world. Enactus offers our students hands-on experience of conceptualising and setting up businesses that address some of the most pressing problems of the world.

# ARTHANITI

Arthaniti stands for growth and with the synergy of cooperation and development, we seek to create a close-knit community that adheres to inclusion of people from various subject-fields. While Economics is where the understanding of the society begins, our idea of progress is based upon inclusion and collaborative effort.

► <https://arthanitijgu.wixsite.com/arthaniti>

## YOUTH PARLIAMENT

The society attempt to solve real life issues/crises in a simulated and moderated environment, giving the members an opportunity to train themselves at the art of logical argumentative public speaking, policy formulation and analysis, critical thinking, conflict resolution, consensus making etc. They also conduct weekly discussions on events happening around our “global village” - to foster the skill of listening to a view point which we may not necessarily, always, do agree with.

## FEMINIST ECONOMICS & POLICY INITIATIVE

Founded in September 2021 at the School of Government and Public Policy, O.P. Jindal Global University, Feminist Economics & Policy Initiative (FEPI) is an attempt towards democratising knowledge creation and representation in economic research and policy. We wish to create a space for individuals to openly discuss and debate issues of gender and that of other marginalised social groups, challenging the current status-quo of biased transactions in the market and non-market spheres. A university space, thus, provides us with an opportunity to mainstream feminist activism, fuelling policy advocacy and action, from the ground up.

► <https://fepijgu.wordpress.com/>



# RESEARCH CENTRES

JGU's research centres and institutes play an important role in advancing our research agenda and a significant part of our collaborative research work is carried out through them. Our research centres are conceptualized around subject areas of particular interest to the JGU research community and which also serve our research charter and overall vision. Over the past eight years, the University has established 52 research centres, in addition to three institutes that focus on behavioral sciences, executive education and leadership development and higher education research and capacity building. There are four research centres in JSGP.



“Sharpening ideas, deepening understanding of a complex world”

- Complexity Economics, Applied Spirituality and Public Policy (CEASP)
- Sustainability
- Legal Empowerment of the Poor

## PUBLICATIONS

### JOURNAL

JSGP publishes the Jindal Journal of Public Policy (JJPP), a journal to disseminate rigorous theoretical, applied, and empirical research. Each issue of the journal carries original peer-reviewed papers.



Faculty Workshop on 29<sup>th</sup> July 2019.

## REPORT

The State of Justice in India Report (SJIR) is being prepared by JSGP to contribute to policymaking on the justice system and rule of law in the country. The report is pioneering as it aims to analyse the legal and policy dimensions of the justice delivery system in India. The report will describe the situation of the state as well as non-state justice mechanisms. The upcoming report maps the terrain of the justice system in India by identifying the various agencies engaged in law enforcement and adjudication of disputes, and authorities that regulate these agencies and examine the processes through which such regulation takes place.

The aim is to contribute to improving policies on law enforcement, dispute resolution, access to justice and legal empowerment, and data collection by governmental and non-governmental agencies.

# FACULTY @ JSGP



**PROFESSOR R. SUDARSHAN**  
Dean and Professor

B.A. (Hons.) (Economics), (Bangalore University);  
M.A. (Economics), (Delhi School of Economics);  
M.Phil. Politics, (University of Oxford)



**PROF. (DR.) MILINDO CHAKRABARTI**  
Professor

B.A. (Economics);  
M.A. (Economics);  
Ph.D. (University of North Bengal)



**PROF. (DR.) INDRANIL MUKHOPADHYAY**  
Professor and Editor, Jindal Journal of Public Policy

B.Sc.(Economics), (University of Calcutta)  
M.A. (Economics); M.Phil. (Public Health);  
Ph.D. (Health Economics) (JNU, New Delhi)



**PROF. (DR.) SUBARAN ROY**  
Professor

B.Sc. (Economics), (University of Calcutta)  
M.A. (International Economics), (JNU, New Delhi)  
M.S. (Economics), Ph.D. (Economics), (Louisiana State University)



**PROF. (DR.) SUMEET RAMDAS MHASKAR**  
Professor

B.A. (History & Political Science) (University of Mumbai);  
M.A. (Political Science);  
M.Phil. (Political Science) (JNU, New Delhi);  
D.Phil. (Oxford)



**DR. SWETASREE ROY**  
Professor and Associate Dean, Institutional Promotion, Director- Jindal Policy Research Lab (JPRL)

B.A. (Political Science) (University of Calcutta)  
M.A. (International Relations); M.Phil. (East Asian Studies), (JNU, New Delhi); M.A (Political Science);  
Ph.D. (Politics & Government) (Louisiana State University)



**PROF. (DR.) AVANINDRA NATH THAKUR**  
Professor

B.A.(Economics), (University of Delhi )  
M.A. (Economics); M.Phil.(Economics);  
Ph.D. (Economics), (JNU, New Delhi)



**PROF. (DR.) DEBAJIT JHA**  
Professor and Associate Dean, Admissions and Outreach

B.A. (Economics), (University of North Bengal);  
M.A. (Economics), (Banaras Hindu University);  
Ph.D. (Economics), (JNU, New Delhi)



**PROF. (DR.) NAREESH SINGH**  
Professor and Director - Centre for Complexity Economics and Applied Spirituality for Public Policy (CEASP)

B.Sc. (Natural Sciences), (University of Guyana, Georgetown);  
M.Sc. (Agriculture) Indian Agricultural Research Institute (IARI), New Delhi; Ph.D. (Environmental Sciences), (University of West Indies, Jamaica)



**PROF. (DR.) BHUVANESHWARI RAMANI**  
Professor and Associate Dean, International Collaborations

B.Arch.; M.Sc. (Asian Institute of Technology, Bangkok);  
M.Sc. (Social Policy) (London School of Economics);  
Ph.D. (London School of Economics)



**PROF. (DR.) SONALI ROY**  
Professor

B.Sc. (University of Calcutta);  
M.Sc.; Ph.D. (ISI, Kolkata)



**PROF. (DR.) SUBHASISH RAY**  
Professor and Associate Dean, Faculty Research and Publications

B.Sc. (Economics), (St. Xavier's College, Kolkata)  
M.A. (Economics); M.Phil. (Economics), (JNU, New Delhi)  
Ph.D. (Political Science) (University of Rochester)



**PROF. (DR.) SWAGATO SARKAR**  
Professor

B.Sc (Mass Communication), (University of Calcutta)  
M.A (Social Welfare Administration - Social Work), (TISS, Mumbai) M.Phil. (Development Studies);  
D.Phil.(Development Studies), (University of Oxford)



**PROF. (DR.) VIVEK U. PADVETNAYYA**  
Professor and Associate Dean, Research Ethics and Review

M.B.B.S (University of Mysore);  
D.B.M. (ICFAL University);  
M.Sc. (Health Policy) (LSE & LSHTM);  
D. Phil. – Public Health (Political-Economy) (University of Oxford)



**PROF. (DR.) PRADEEP GUIN**  
Professor and Associate Dean, Placements and Internships

B.Sc. (Statistics), M.Sc. (Statistics) (University of Delhi);  
Ph.D. (University of Maryland, Baltimore County)



**PROF. (DR.) KRISHANU KARMAKAR**  
Professor and Associate Dean, Examinations and Assessments

B.Sc. (University of Calcutta);  
M.A. (University of Delhi);  
M.A.; Ph.D. (Georgia State University)



**PROF. (DR.) MANINI OJHA**  
Associate Professor and Editor,  
Jindal Journal of Public Policy

B.A. (Economics), (University of Delhi);  
M.A. (Economics), (JNU, New Delhi);  
M.A. (Economics), (Southern Methodist University);  
Ph.D., (Southern Methodist University)



**PROF. (DR.) NAVEEN JOSEPH THOMAS**

Professor and Vice Dean

B.Sc. (Physics), (University of Delhi)  
M.Sc.(Economics), (TERI University)  
Ph.D. (Economics), (Delhi School of Economics)



**PROF. (DR.) NAMESH KILLEMSETTY**

Associate Professor and Associate Dean, Academic Affairs and Programme Strategy

B.Tech. (Motilal Nehru National Institute of Technology);  
M.Tech. (CEPT, Ahmedabad);  
Ph.D. (University of Massachusetts, Boston)



**PROF. (DR.) GEETA SINHA**  
Associate Professor and Associate Dean,  
Admissions and Outreach

B.A. (Hons.) (Economics) (Sambalpur University);  
P.G. Diploma in Rural Dev. (Xavier Institute of Social Service);  
M.A. (Gender and Development) (IDS, University of Sussex);  
Ph.D. Candidate (Oxford Brookes University)



**PROF. (DR.) SUDIP PATRA**  
Associate Professor and Associate Dean,  
Research Centres and Externally Funded Projects

B.Sc. (University of Calcutta);  
M.Sc. (Coventry University, UK);  
M.B.A. (International Business & Management);  
Ph.D. (Glasgow University) Associate Fellow, HEA, UK;



**PROF. (DR.) SUNAINA DHINGRA**  
Associate Professor

B.A. (Economics), (University of Delhi);  
M.A. (Economics), (Jamia Millia Islamia University);  
Ph.D. (Economics), (Delhi School of Economics)



**PROF. (DR.) VIDYA SUBRAMANIAN**

Associate Professor

M.A. (TISS, Mumbai);  
M.Phil.; Ph.D. (JNU, New Delhi)



**PROF. (DR.) RAHUL MENON**  
Associate Professor and Associate Dean  
Conferences and Open Lectures

B.A in Economics and Statistics,  
(St Xavier's College, Mumbai); M.A in Economics,  
(Gokhale Institute of Politics and Economics);  
M.Phil in Economics; Ph.D in Economics, (JNU, New Delhi)



**PROF. (DR.) GURPREET SINGH**  
Associate Professor and Associate Dean,  
International Collaborations

B.A. (Economics); M.A. (Economics), (Panjab University)  
M.Phil (Applied Economics); Ph.D. (Economics),  
(JNU, New Delhi)



**PROF. (DR.) SHIVANGI CHANDEL**  
Associate Professor

B.Sc. (Mathematics), (University of Delhi);  
M.Sc.(Mathematics), (IIT Kanpur);  
Ph.D. (Economics), (IGIDR, Mumbai)



**PROF. (DR.) SUNETRA GHATAK**  
Associate Professor

B.A.(Economics), (North Bengal University)  
M.A. (Economics), (Visva-Bharati University,  
West Bengal); Ph.D.(Economics) JNU, New Delhi)



**PROF. (DR.) ANNIKA BOSE STYCZYNSKI**

Professor

B.A.; M.A. (Europa Universität Viadrina);  
Ph.D. (Freie Universität Berlin)



**PROF. (DR.) SONAL DUA**  
Associate Professor and Associate Dean,  
Executive Education

B.A. (Economics), (University of Delhi);  
M.A. (Economics), (JNU, New Delhi);  
Ph.D. (Economics), (University of Delhi)



**PROF. (DR.) TIRTHA CHATTERJEE**

Associate Professor and Associate Dean,  
Student Affairs

B.Sc. (Economics); M.Sc. (Economics),  
(University of Calcutta)  
M.Phil. (Development Studies); Ph.D.  
(Development Studies), (IGIDR, Mumbai)



**PROF. CHANDAN NANDY**  
Associate Professor of Practice

Bachelor of Arts (Honours) (B.A. Hons.),  
Presidency College, Calcutta University  
Master of Arts (M.A.), Brandeis University, Massachusetts  
Master of Arts (M.A.), University of Calcutta



**PROF. (DR.) TARUN ARORA**  
Associate Professor and Associate Dean,  
Placement and Internships

B.A. (Hons.) Economics; Delhi College of  
Arts & Commerce, University of Delhi;  
M.A.; M.Phil. Economics; University of Hyderabad  
PhD Economics; Institute for Social and Economic  
Change, Bangalore



**PROF. (DR.) MRINALINI JHA**  
**Professor and Director, Jindal Institute of Haryana Studies**

B.A. (Economics), (University of Delhi);  
 Post-Doctoral Research Fellow, (Centre for Sustainable Employment at the Azim Premji University);  
 Ph.D. (University of Delhi)



**PROF. (DR.) SWAGATA BHATTACHARJEE**  
**Associate Professor**

B.Sc. (Hons.) (Economics),  
 (Presidency College, University of Calcutta);  
 M.S. (Quantitative Economics),  
 (Indian Statistical Institute, Delhi);  
 M.S. (Economics), Ph.D. (Economics),  
 University of Texas at Austin



**PROF. (DR.) PRITI AGARWAL**  
**Associate Professor and Associate Dean (Research) Editor, Jindal Journal of Public Policy**

B.A. (Economics), (University of Delhi)  
 M.A. (Economics), (IGNOU- Gold Medalist in Economics)  
 Ph. D. (Economics), Centre for International Trade and Development, (JNU, New Delhi)



**PROF. (DR.) PRIYA RANJAN**  
**Associate Professor**

B.A. (Jawaharlal Nehru University),  
 M.A. (Jamia Millia Islamia),  
 M.Phil.; Ph.D. (Jawaharlal Nehru University)



**PROF. (DR.) APARNA AGARWAL**  
**Assistant Professor**

B.A., (University of Delhi);  
 M.A.; M.Phil., (JNU, New Delhi);  
 D.Phil., (University of Oxford)



**PROF. (DR.) SYED SHARIQ HUSAIN**  
**Assistant Professor**

M.Sc. (Jamia Millia Islamia, India);  
 Pre PhD (JNU, New Delhi);  
 Ph.D. (JNU, New Delhi)



**PROF. (DR.) DHRITIMAN GUPTA**  
**Assistant Professor**

B.A. (Jadavpur University);  
 M.A. (Delhi School of Economics, Delhi);  
 M.E. (Toulouse School of Economics, France);  
 Ph.D. (Indian Statistical Institute, Delhi)



**PROF. (DR.) ANKUSH GARG**  
**Assistant Professor and Assistant Dean, Student Affairs**

B.A. (University of Delhi);  
 M.A. (University of Delhi);  
 Ph.D. (University of Delhi)



**PROF. PRATIK PHADKULE**  
**Assistant Professor of Practice**

B.A., M.A. (Social Work) (TISS, Mumbai);  
 M.P.A. (Central European University, Budapest)



**PROF. (DR.) PRACHI BANSAL**  
**Assistant Professor and Assistant Dean, Placement and Internships**

B.A. (Economics), (University of Delhi)  
 M.A. (Economics),  
 PhD (Economics), (JNU, New Delhi)



**PROF. ZARA HASNAIN**  
**Assistant Lecturer**

B.A. (University of Delhi);  
 M.A. (O.P. Jindal Global University)



**PROF. SIDDIQUI SABEELA IQBAL**  
**Assistant Lecturer**

B.Sc. (Dr. A.H.R Shia Degree College, Jaunpur);  
 M.A. (Azim Premji University, Bangalore)



**PROF. ELIZABETH LYN**  
**Assistant Lecturer**

B.A. (Hons.) (Economics) (University of Delhi)  
 M.A. Economics (University of Madras)



**MS. MEENUKA NIRMALIN MATHEW**  
**Senior Research Fellow**

B.A. (Aquinas University College, Sri Lanka);  
 M.A. (O.P. Jindal Global University)



**MS. RIDDHI SHARMA**  
**Lecturer**

BTech CSE (Amity University, Noida);  
 MA in Public Policy (O. P. Jindal Global University)



**PROF. (DR.) VATSALYA SRIVASTAVA**  
**Adjunct Professor**

B.A. (Economics) (University of Delhi),  
 M.Sc. (Economics),  
 Ph.D. Candidate (Tilburg University)

## JSGP ADMINISTRATION



**MR. LALIT MOHAN**  
 Manager & Academic Coordinator, JSGP

☎ +91 702 785 0110  
 ✉ [imsnepolia@jgu.edu.in](mailto:imsnepolia@jgu.edu.in)



**MR. SAMEER BHASIN**  
 Manager

☎ +91 74044 40549  
 ✉ [sameer.bhasin@jgu.edu.in](mailto:sameer.bhasin@jgu.edu.in)

# AMENITIES & FACILITIES

University hall of residence for students consists of several blocks of buildings designed by a French architect. University has:

- 24x7 health center with medical officer.
- Center for wellness and counselling.
- Washex hospitality solutions.
- 24x7 Security.
- State-of-the-art sports facility includes badminton, tennis, basketball courts, cricket ground, football, volleyball, swimming pool, indoor games, gymnasium, yoga & aerobics.
- Multi-cuisine dining facility.
- Fully functional branch of ICICI bank with ATMs (ICICI bank and others) on several locations.
- Post office extension/courier office.



## FOOD COURT

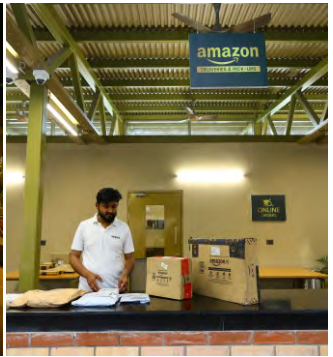
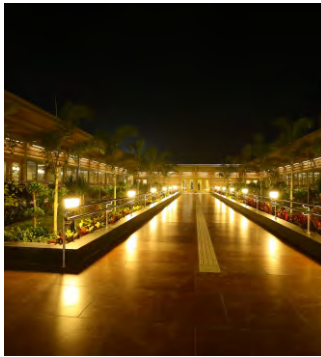
A world class food court - Outlets at this food court provide multi-cuisine options through brands such as Baskin Robins, Dominos, Subway, Bercos, Moti Mahal, Chaayos, Malgaadi Dhaba, Oki Poki, Dunkin Donuts, Nirula's, Bikanervala, Bercos, Mahabelly etc.

## OTHER FACILITIES

APOLLO PHARMACY	AMUL ICE CREAM PARLOUR	CAFÉ COFFEE DAY TUCK SHOP
JUICE & MORE TUCK SHOP	CHAI TAPRI	TRIN BEAUTY SALON
STARBUCKS	CONVENIENCE STORE	REPROGRAPHIC CENTRE
NESTLE TUCK SHOP	LOOKS TAILORING HOUSE	



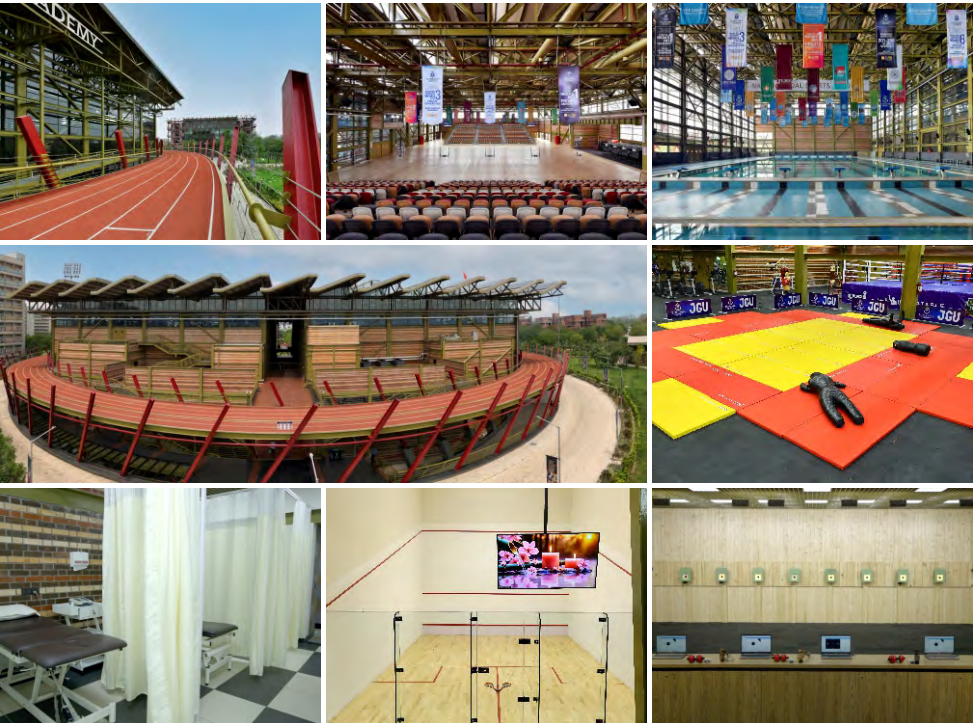
RECREATIONAL ARENA FOR STUDENTS ACTIVITIES (RASA)



# INDIA'S FIRST CONSTITUTION MUSEUM AND THE RIGHTS & FREEDOMS ACADEMY



# NAVEEN JINDAL SPORTS ACADEMY



A STATE-OF-THE-ART ACADEMY FOR TRAINING & REHABILITATION

# ADMISSION PROCEDURE

Applicants for the UG programmes at JSJP can apply directly through our online admission form available at our website. Kindly scan QR code / follow URL to visit our admission page.



<https://admissions.jgu.edu.in/jsjp-ug>



Scan for Admissions

Applicants for the PG programmes at JSJP can apply direct through our online admission form available at our website. Kindly scan QR code / follow URL to visit our admission page.



<https://admissions.jgu.edu.in/jsjp-pg>



Scan for Admissions

## SCHOLARSHIPS

O.P. Jindal Global University awards Merit cum Means Scholarships (MCM) every year. The MCM Scholarship entitle students to tuition fee waivers. The eligibility criteria includes annual family income/ XII board score/ JSAT or standardized examination results and faculty interview score. Weightage will also be given to curricular and extra-curricular achievements.

### RESEARCH ASSISTANTSHIPS:

Students with a strong academic performance and inclined towards research, are provided with paid research assistantships under the guidance of a faculty.

FOR ADMISSION, CONTACT:

+91 741 961 3582

+91 893 011 1045

(For UG)

[jsgpba.admissions@jgu.edu.in](mailto:jsgpba.admissions@jgu.edu.in)

[www.jgu.edu.in/jsgp](http://www.jgu.edu.in/jsgp)

+91 741 984 2424

+91 741 974 8899

(For PG)

[jsgp.admissions@jgu.edu.in](mailto:jsgp.admissions@jgu.edu.in)

# LIFE @ JGU



Singer Jubin Nautiyal performs during Biswamil Fest at JGU on 22 October 2019



Singer Mohit Chauhan performs during Biswamil Fest at JGU on 20 October 2024



Veteran Actor Naseeruddin Shah performs Gabriel Emanuel's Einstein at JGU on 30 August 2019

# JGU *at a* GLANCE



**16000+**  
Students



**1100+**  
Faculty



**4000+**  
Faculty &  
Administrative Staff  
from **54** countries



**15000+**  
Alumni Network  
World-Wide



**12 SCHOOLS**



**50+**  
Programmes

**30+** Undergraduate Programmes  
**20+** Postgraduate Programmes  
Doctoral Programme



Jindal Global Law School  
India's First Global Law School



JINDAL GLOBAL  
BUSINESS SCHOOL



Jindal School of International Affairs  
India's First Global Policy School



Jindal School of Government  
and Public Policy  
India's First Public Policy School



Jindal School of  
Liberal Arts & Humanities  
India's First Transnational Research School



Jindal School of  
Journalism & Communication  
India's First Global Media School



Jindal School of  
Design & Architecture  
India's First Global Design School



JINDAL SCHOOL OF  
BANKING & FINANCE  
India's First Global Finance School



JINDAL SCHOOL OF  
ENVIRONMENT & SUSTAINABILITY  
India's First Global Sustainability School



Jindal School of  
Psychology & Counselling  
India's First Global Psychology School



JINDAL SCHOOL OF  
LANGUAGES & LITERATURE  
India's First Global Language School



JINDAL SCHOOL OF PUBLIC HEALTH &  
HUMAN DEVELOPMENT  
India's First Global Health School

## RESEARCH

**6** Research & capacity building institutes



**9200+**  
Publications



**65+**  
Interdisciplinary  
research centres



## INTERNATIONAL COLLABORATIONS



**600+**  
Collaborations with  
International Universities &  
Higher Education Institutions



**10**  
Forms  
of Global  
Partnerships



**80+**  
Countries  
& Regions



**300+**  
Faculty & Student  
Exchange Collaborations



**160+**  
Countries  
represented by  
Students

## RANKINGS & RECOGNITIONS

**RANKED**  
**35**  
for  
LAW

**RANKED**  
**90**  
for  
POLITICS &  
INTERNATIONAL  
STUDIES

**TOP**  
**200**  
for  
BUSINESS &  
MANAGEMENT  
STUDIES

**INDIA'S NO. 1 RANKED UNIVERSITY**

PUBLIC & PRIVATE

LAW  
POLITICS &  
INTERNATIONAL  
STUDIES

BUSINESS &  
MANAGEMENT  
STUDIES

PRIVATE

SOCIAL  
SCIENCES &  
MANAGEMENT

ARTS &  
HUMANITIES

ECONOMICS &  
ECONOMETRICS

**RANKED**  
**232**  
for  
SOCIAL  
SCIENCES &  
MANAGEMENT

**RANKED**  
**323**  
for  
ARTS &  
HUMANITIES

**TOP**  
**500**  
for  
ECONOMICS &  
ECONOMETRICS

**IN THE WORLD**

QS  
WORLD  
UNIVERSITY  
RANKINGS  
BY SUBJECT 2026



TIMES HIGHER EDUCATION  
SUBJECT RANKINGS 2026



TIMES HIGHER EDUCATION  
SUBJECT RANKINGS 2026



AACSB  
ACCREDITATION



CONFERRED  
THE STATUS OF AN  
**Institution of  
Eminence**  
BY THE  
GOVERNMENT OF INDIA



**O.P. JINDAL GLOBAL**  
INSTITUTION OF EXCELLENCE DEEMED TO BE  
**UNIVERSITY**  
A Private Member of Jindal Foundation

📍 Sonapat - 131001, (NCR of Delhi)

JGU – An Initiative of Jindal Foundation

🌐 [www.jgu.edu.in](http://www.jgu.edu.in)



📱 @JINDALGLOBALUNI