



O.P. JINDAL GLOBAL

INSTITUTION OF EMINENCE DEEMED TO BE

UNIVERSITY

A Private University Promoting Public Service



**Jindal School of Government
and Public Policy**

India's First Public Policy School

JINDAL SCHOOL OF GOVERNMENT AND PUBLIC POLICY

2023

JGU | O.P. JINDAL GLOBAL UNIVERSITY

O.P. Jindal Global University (JGU) is a non-profit global university established by the Government of Haryana and recognised by the University Grants Commission (UGC). JGU was established as a philanthropic initiative of its Founding Chancellor, Mr. Naveen Jindal in memory of his father, Mr. O.P. Jindal. JGU is one of the few universities in Asia that maintains a 1:9 faculty-student ratio and appoints faculty members from India and different parts of the world with outstanding academic qualifications and experience. JGU is a research intensive university, which is deeply committed to its core institutional values of interdisciplinary and innovative pedagogy, pluralism, rigorous scholarship and globalism, and international engagement.

JGU has established 12 schools: Jindal Global Law School (JGLS); Jindal Global Business School (JGBS); Jindal School of International Affairs (JSIA); Jindal School of Government and Public Policy (JSGP); Jindal School of Liberal Arts & Humanities (JSLH); Jindal School of Journalism & Communication (JSJC); Jindal School of Art & Architecture (JSAA); Jindal School of Banking & Finance (JSBF); Jindal School of Environment & Sustainability (JSES); Jindal School of Psychology & Counselling (JSPC); Jindal School of Languages & Literature (JSL) and Jindal School of Public Health and Human Development (JSPH). JGU has been granted "autonomy" by the University Grants Commission and the Ministry of Education, Government of India, for receiving the "A" Grade from the National Assessment and Accreditation Council (NAAC). This makes JGU the only private university in the state of Haryana and one of the only two private universities in India to be given the status of autonomy.

JGU has emerged as India's No. 1 Private University for the third year in a row, according to the QS Quacquarelli Symonds World University Rankings 2023 and was ranked among the Top 700 universities in the world. We are also among the Top 150 universities globally under the age of 50 years by the QS Young University Rankings 2022. JGU has also been recognised in the Top 500 Universities as per the QS Graduate Employability Rankings 2022.

In September 2019, JGU was selected as an 'Institution of Eminence' (IOE) by the Government of India, making JGU one of only eight private universities in India to be awarded this status.



ABOUT

JINDAL SCHOOL OF GOVERNMENT AND PUBLIC POLICY (JSGP)

Jindal School of Government and Public Policy (JSGP), one of the twelve schools in the University, engages with the contemporary policy environment, which demands new imaginations, methodologies, and revitalized ethics. Through national and international collaborations, JSGP promotes interdisciplinary studies, teaching and research programmes, and strives to develop a comparative perspective on local and global policy issues.



JSGP offers students a well-rounded education and exposes them to the field in both rural and urban contexts and the institutional mechanisms of governance. JSGP regularly invites academicians, activists, senior officials, politicians, NGO-workers, policymakers from the United Nations (UN) and other international organizations to deliver lectures and interact with students and faculty members.

Message from the Dean



PROF. R. SUDARSHAN

DEAN

Jindal School of Government & Public Policy (JSGP)

The Jindal School of Government and Public Policy (JSGP) has pioneered public policy and economics education since 2012.

Until recently, public policy education was the preserve of people serving governments at the senior policymaking level. However, just as war is too important to be left only to generals, public policy is too important to be left only to officials serving governments and their political masters.

People from all walks of life should be more knowledgeable about public policy, especially students who aspire to improve the world. Many students (undergraduates and professionals) in India and other developing countries wish to study public policy. Public policy education is an idea whose time has come.

JSGP's undergraduate, postgraduate and doctoral programmes are genuinely interdisciplinary, drawing insights from multiple disciplines, especially economics.

JSGP students can opt to join the public policy or the economics stream of studies. Common to all JSGP students is their desire to make a difference in the world, a passion for problem-solving, and a keen interest in the political process. JSGP students want to be the change-makers in society, the ones who help craft solutions to such problems as poverty, inequality, unemployment, sustainable development, and climate change.

The opportunities for JSGP students to show leadership and deploy their knowledge and skills in rewarding careers are steadily growing. For example, students from JSGP public policy and economics streams are well-equipped to join governments (through the civil service selection process or lateral entry). In addition, many top corporations have established public policy positions that JSGP students can best fill, having an interdisciplinary education, compared to others specialised in single disciplines.

Corporate social responsibility (CSR) ventures afford JSGP students rewarding employment to increase the supply of public goods and merit goods. NGOs working in partnership with governments and civil society organisations that advocate policies to serve the public interest can provide meaningful careers to our students.

International institutions, including the United Nations and philanthropic foundations, committed to realising the Sustainable Development Goals, will seek out students educated at JSGP. And for those students who have an aptitude for research and teaching, a growing number of think tanks and universities can provide meaningful employment.

JSGP students manage many clubs and engage in fun-filled extra-curricular activities, including the JSGP Tedx, Policy Club, Arthaniti and Youthopia.

JSGP is research-oriented and has faculty with impeccable qualifications from first-rate universities worldwide. JSGP's research centres work in innovative areas such as complexity economics, applied spirituality, measuring the efficacy of public policies and improving justice delivery. In addition, the Policy Action Laboratory specialises in field-based research and learning.

JSGP students can work with faculty on research projects and assist in teaching, earning significant stipends to complement scholarship tuition waivers and support their education. In addition, they can count on exciting internships during inter-semester breaks that provide experiential learning. Finally, some postgraduate students who take up capstone projects in their final year can expect to continue working in their client institutions after graduation.

JSGP was instrumental in legally registering the Association for Public Policy Education (APPE) to provide a platform for everyone in India and abroad to share their experience with innovations in public policy pedagogy. Furthermore, JSGP is committed to refining the teaching of Economics, creatively combining orthodox and heterodox approaches.

I close my invitation to prospective students to join JSGP by remarking that humility, not boastfulness, is a virtue we cherish. CS Lewis, a British scholar who taught English literature at both Oxford and Cambridge, wrote: "Humility is not thinking less of yourself, but thinking of yourself less." In JSGP, we practice humility in learning. We spend less time relying on what we already know and proportionally more time exploring new concepts and ideas.

INTRODUCTION

TO UG & PG PROGRAMME

B.A. (HONS.) PUBLIC POLICY

B.A. (HONS.) ECONOMICS

M.A. PUBLIC POLICY

M.A. ECONOMICS

INTRODUCTION

B.A. (HONS.) PUBLIC POLICY

All students who wish to make the world a better place through proper use of knowledge and skills will find our Public Policy programme perfectly suited to that noble aim. The Public Policy undergraduate programme has a strong emphasis on quantitative, qualitative, as well as mixed, research methods. Quantitative methods can provide vital information about a society or community through surveys, examination of records or censuses that no individual could obtain by observation. Qualitative methods are needed to understand how individuals think, feel or behave in particular situations, or in relations with others that develop over time. These methods are just as scientific as quantitative methods although they focus more on the meaning of different aspects of peoples' lives, and on their accounts of how they understand their own and other's behaviour and beliefs. On the other hand, mixed methods approach combines the two – where quantitative analysis provides the raw analysis of facts and figures and qualitative analyses like case studies help in substantiating the hypotheses. Public Policy is particularly suited to students who wish to play a meaningful role in public life, having equipped themselves with a broad-based education suited to many multiple careers and meaningful lives, be it in politics, civil service, civil society organisations, businesses with commitment to social service, and new vocations that are in the making.



WHY STUDY

B.A. (HONS.) PUBLIC POLICY @ JSGP

B.A. (Hons.) Public Policy is a unique and first of its kind interdisciplinary programme in India, which provides the students with a solid grounding in social science theories and their applications.



- 01** Students will learn how to use social science to solve the problems of the society and the economy.
- 02** They will acquire skills to develop models and tools, and apply those in the field of public policy, development interventions, social service, journalism, advocacy, research, communications, branding, and marketing research.
- 03** The core courses will help the students to gain conceptual clarity and an array of electives will allow them to deepen learning on policy issues and themes they choose to specialise.
- 04** The programme will offer exposure to the real world through internships, research, and field work. All students will be extensively mentored by the faculty members and industry specialists.
- 05** The broad structure of this programme will impart knowledge required to succeed in the civil service examinations.

Faculty trained at the best universities of the world.

Original, innovative and dynamic curriculum allows the students to gain cutting-edge knowledge.

A large selection of core and elective courses allow students to pursue their own interests.

DISTINCTIVE FEATURES

Strong emphasis on the development of quantitative and qualitative research, writing & communication skills.

Real-world exposure and scope to interact with the experts in the field and industry.

International collaborations offer opportunities for student exchange and attending summer schools at renowned foreign universities.

COURSE STRUCTURE

SEMESTER I

- Introduction to Public Policy
- Society and Public Policy
- Principles of Microeconomics
- Statistics and Quantitative Methods-I
- State, Politics & Policy Making
- Academic Writing

SEMESTER II

- Gender and Development
- Principles of Macroeconomics
- Qualitative Research Methods
- Statistics and Quantitative Methods-II
- Social Policy
- Elective in JSGP

SEMESTER III

- Democracy, Participation & Accountability
- Environmental Studies
- Indian Economy: Structural Issues
- Data Management
- Policy Making Institutions in India
- Elective in/out of JSGP

SEMESTER IV

- Public Finance
- Political Thought
- Programme Evaluation
- Introduction to Philosophy & Logic
- Development & Governance
- Elective in JSGP

SEMESTER V

- Law, Policy & Justice
- Survey Design
- Project Design & Management
- International Policy Regimes
- Elective in JSGP
- Elective in/out of JSGP

SEMESTER VI

- Sustainable Development Goals
- Ethics
- Game Theory
- Social Theory
- Elective in JSGP
- Elective out of JSGP

SEMESTER VII

- Social Movements & Civil Society
- Field Immersion (Policy Lab)
- Research Paper Writing
- Elective in JSGP
- Elective in/out of JSGP

SEMESTER VIII

- Research paper / 3 electives
- Research paper / 3 electives
- Research paper / 3 electives
- Elective in JSGP
- Elective in/out of JSGP

ELECTIVES

- | | | |
|--------------------------------|-------------------------------------|---|
| ■ Technology and Public Policy | ■ Development Ideas | ■ Institutions & Complexities in Policy Making |
| ■ Economics of Regulation | ■ Environmental Policy | ■ Communication in policymaking (negotiation, consultation, lobbying, writing a policy brief..) |
| ■ Education Policy | ■ Rural Governance | |
| ■ Health Policy | ■ Technology and the Future of work | |
| ■ Poverty and Inequality | ■ Trade and Development | |
| ■ Urban Governance | ■ Econometrics | |
| ■ Labour Policy | ■ Geographical Information Systems | |

OBJECTIVES

- Appreciating the use of multidisciplinary social science knowledge in policy formulation and decision making.
- Acquiring a capacity to undertake evidence-based policy analysis, implementation, and assessment.
- Learning the theoretical underpinnings of public policy along with the practical applications.
- Affording an opportunity to develop expertise in specific areas of public policy through the possibility of obtaining concentrations in: **Social Policy(SP) | Analytical Techniques (AT) | Economic Policy(EP) | Environment & Sustainability (ES) | Governance (Gov.)**

Students obtaining concentrations will be required to choose a minimum of 3 electives under a concentration (within or outside JSGP) and will

write the research paper on a topic falling under the concentration.

- Providing flexibility by introducing the choice of undertaking a 3 year undergraduate program in Public Policy or to spend an additional year honing research skills to obtain a 4 year undergraduate degree in Public Policy with Honours.
- Students who wish to undertake a four year BA (Hons) in Public Policy will complete a total of 46 courses with 4 credits per course, obtaining a total of 184 credits over 8 semesters. Students interested in honing their research skills crucial for a career in policy making may opt for a research paper instead of 3 electives in their 8th and final semester.
- Students who opt to undertake a three year BA in Public Policy will complete a total of 36 courses, with 4 credits per course, obtaining 144 credits over 6 semesters.

PROGRAMME SPECIFICATIONS

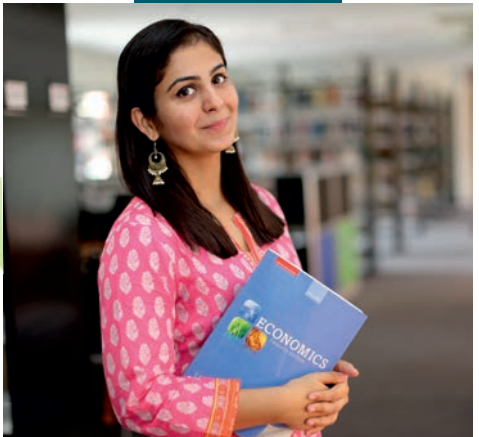
Programme	B.A. (Hons.) Public Policy		
No. of Seats	15		
Course Duration	4 Years		
Admission Criteria	Applicants are selected through a holistic admission process conducted over three rounds based on a personal statement, supplemental application, X and XII grade marks, Personal Interview, and Jindal Scholastic Aptitude Test (JSAT) score or equivalent (SAT/ACT/CUET).		
Accepted Standardised Tests	JSAT / SAT / ACT / CUET		
Minimum Eligibility for Application	Successful completion of Class XII examination or equivalent (CBSE, State Boards, IB, ISC, Cambridge and other Government-recognised school leaving exams).		
Application Fee	₹ 3,000/- (Applicable for both UG programmes of JSGP)		
Programme Fee	₹ 3,00,000/- per annum*	Residential Fee	₹ 2,92,500/- per annum*
Refundable Security Deposit	₹ 50,000/-**		

*The programme fee and residential fee are subject to an annual increase of upto 10%.
**Fully refundable Security deposit of Rs. 50,000 shall be collected at the time of admission as per university rules.

INTRODUCTION

B.A. (HONS.) ECONOMICS

The Bachelor's degree programme in Economics (Honours) provides theoretical and practical knowledge that makes accurate analysis of the economic situation possible. JSGP Economics graduates are trained to be able to understand the interrelation between the economy and society; to consider economic problems from a global perspective and take a local approach to solve them; to make connections between an economic system's different components; to gauge the implications of decisions related to economic policy; and to respond to the economic problems arising from society in general and the different units that interact therein (e.g. institutions, private companies and sectors of the economy).



WHY STUDY

B.A. (HONS.) ECONOMICS @JSGP

The Bachelor's degree programme in Economics (Honours) provides theoretical and practical knowledge that makes accurate analysis of the economic situation possible. JSGP Economics graduates must be able to understand the interplay between the economy and society; to consider economic problems from a global perspective and take a local approach to solve them; to make connections between an economic system's different components; to gauge the implications of decisions related to economic policy; and to respond to the economic problems arising from society in general and the different units that interact therein (e.g. institutions, private companies and sectors of the economy).

“ Political Economy or Economics is a study of mankind in the ordinary business of life; it examines that part of individual and social action which is most closely connected with the attainment and with the use of material requisites of well-being ”

Alfred Marshall

01

Understand the interrelation between the economy and society.

02

To consider economic problems from a global perspective and take a local approach to solve them.

03

To make connections between different components of an economic system.

04

To gauge the implications of decisions related to economic policy.

05

To respond to the economic problems arising from society in general and the different units that interact therein.



CURRICULUM

There will be 23 core courses, 7 discipline specific electives and 5 General Electives in BA three-year programme. All courses in the fourth year (7 and 8 semester) will be electives. So, four-year degree will have 23 core and 14 discipline specific electives and 5 general electives courses with a research paper or 23 core and 17 discipline specific electives without research paper) and 5 general electives. However, there is proposal to have research method course in the seventh semester as elective (compulsory for those opting for research paper in the next semester).

Total credit requirement of the programme is as follows-

- First Year- 48 credits (Undergraduate Certificate)
- Second Year- 96 credits (Undergraduate Diploma)
- Third Year- 140 credits (Undergraduate Degree)
- Fourth Year- 180 credits (Undergraduate Degree with Honors)
- Internship- 2 credits for each internship.

B.A. (HONS) ECONOMICS COURSE STRUCTURE

SEMESTER I

- Introduction to Mathematics (Basics)
- Principles of Economics
- Statistics I
- Influential Ideas in Evolution of Economics
- General Elective - I
- Academic Writing

SEMESTER II

- Environmental Studies (Field Component)
- Computational Techniques (R/Python)
- Mathematical Methods of Economics
- Statistics II
- General Elective - II
- Elective 1 - Skill/Ability Enhancement Course/ Philosophy of Logic and Reasoning/Foreign languages

SEMESTER III

- Introduction to Microeconomics
- Introduction to Macroeconomics
- Mathematical Methods in Economics - II
- Data Analysis/Survey Design- Field Component
- General Elective - III
- Elective 2 - Minor/Others

SEMESTER IV

- Intermediate Microeconomics
- Intermediate Macroeconomics
- Game Theory - I
- Econometrics I
- General Elective - IV
- Elective 3 - Minor/Others

SEMESTER V

- Development Economics
- Econometrics II
- Public Economics
- General Elective - V
- Elective 4
- Elective 5

SEMESTER VI

- Equity and Fairness
- International Trade
- Indian Economy
- Elective 6
- Elective 7

SEMESTER VII

- Elective 8 (Research Methodology)
- Elective 9
- Elective 10
- Elective 11
- Elective 12

SEMESTER VIII

- Research Paper
- Elective 13
- Elective 14
- Elective 15
- Elective 16

DISCIPLINE SPECIFIC ELECTIVES

- | | | | |
|---------------------------------|-------------------------------|--|--------------------------|
| ■ Applied Economic Analysis | ■ Advanced Macro Economics | ■ Industrial Economics | ■ Economics of Education |
| ■ Indian Agriculture | ■ Money and Finance | ■ Political Economy | |
| ■ Game Theory 2 | ■ Impact Evaluation/Programme | ■ Financial Economics | |
| ■ Public Finance | ■ Behavioural Economics | ■ Economic History of India | |
| ■ Applied Econometrics | ■ Data Science with Python I | ■ Issues in International Economics | |
| ■ Environment Economics | ■ Data Science with Python II | ■ Politics of Development | |
| ■ Advanced Mathematics | ■ Gender and Economics | ■ Comparative Political Economy of Welfare | |
| ■ Network Economics | ■ Health Economics | ■ GIS | |
| ■ Poverty and Inequality | ■ Labour Economics/Migration | | |
| ■ Advance Development Economics | ■ Time Series Analysis | | |

LIST OF GENERAL ELECTIVE COURSES

- | | | |
|---|---------------------------------|---|
| ■ State, Politics & Policy Making | ■ Development & Governance | ■ Education Policy |
| ■ Society & Public Policy | ■ Law, Policy & Justice | ■ Health Policy |
| ■ Gender & Development | ■ Sustainable Development Goals | ■ Environmental Law and Policy in India |
| ■ Democracy, Participation & Accountability | ■ Ethics | ■ Environmental Health: Policy and Practice |
| ■ Policy Making Institutions in India | ■ International Policy Regimes | ■ Cities & Climate Change: Risk Resilience and Sustainability |
| ■ Political Thought | ■ Rural Governance | |
| ■ Programme Evaluation | ■ Urban Governance | |
| | ■ Environmental Policy | |

PROGRAMME SPECIFICATIONS

Programme	B.A. (Hons.) Economics		
No. of Seats	150		
Course Duration	4 Years		
Minimum Eligibility for Application	Successful completion of Class XII examination or equivalent (CBSE, State Boards, IB, ISC, Cambridge and other Government-recognised school leaving exams). Maths in grade XII preferred.		
Admission Criteria	Applicants are selected through a holistic admission process conducted over three rounds based on a personal statement, supplemental application, X and XII grade marks, Personal Interview, and Jindal Scholastic Aptitude Test (JSAT) score or equivalent (SAT/ACT/CUET).		
Accepted Standardised Tests	JSAT / SAT / ACT / CUET		
Application Fee	₹ 3,000/- (Applicable for both UG programmes of JSGP)		
Programme Fee	₹ 3,50,000/- per annum*	Residential Fee	₹ 2,92,500/- per annum*
Refundable Security Deposit	₹ 50,000/-**		

*The programme fee and residential fee are subject to an annual increase of upto 10%.

**Fully refundable Security deposit of Rs. 50,000 shall be collected at the time of admission as per university rules.

INTRODUCTION

M.A. PUBLIC POLICY

This Master programme trains students to build a career in the complex policy environment. It uses an interdisciplinary approach to study and analyse contemporary political, economic, and social issues in a coherent and comprehensive manner. It is carefully structured to impart a strong training in theory, covering key literature and debates. Students develop quantitative and qualitative analytical skills, receive exposure to the real-world policymaking process, and enhance their managerial skills. We encourage students to choose courses and topics which help them to explore their intellectual curiosity and work towards developing expertise in a chosen domain. Faculty mentors guide students to make the most of their education with us.



WHY STUDY

M.A. PUBLIC POLICY @JSGP

“A stepping stone to exciting careers in public life”

JSGP was the first public policy school in India to offer a 2-years full-time M.A. in Public Policy programme. The well-established M.A. Public Policy programme opens doors to the exciting world of public life. The discipline of Public Policy studies the way governments play a role in ensuring human security and human development, promoting the common good and upholding the public interest. JSGP introduces students to the challenging and increasingly complex policy environment and trains students to solve practical policy problems and find solutions conducive to the public good.

Students benefit from the research-intensive environment of the university, which has established several research centres. Faculty members are actively engaged in research within and outside the university. JGU has over 1000 full-time faculty members and nearly 10,000 students. We have an extensive academic network and collaborative projects with reputed universities, including Oxford, Cambridge, Cornell, Harvard, Indiana, and Yale.

Our proximity to New Delhi, the capital city of the country, allows students to interact with policymakers and implementers within the government, as well as with a host of experts from academia, NGOs, and industry. Our internship and capstone programmes allow students to gain first-hand experience in the development and policy sectors. Most of our students find jobs in public and private policy institutions before or immediately after graduating from the programme.



CURRICULUM

The curriculum comprises of core and elective courses which are carefully balanced, drawing upon disciplines pertinent to designing, implementing, and evaluating public policies.

Students are required to complete 90 credits, obtained from 16 core courses and 7 elective courses spread over 4 semesters, and write a dissertation or undertake a capstone project. Students are encouraged to specialise in their preferred fields through elective courses, those may be taken from any of the 11 Schools including courses in law, business, and international affairs.

The University has a full-fledged language centre in which Mandarin, Spanish, French, German and Arabic languages are taught to students at no additional cost.

01 M.A. PUBLIC POLICY COURSE STRUCTURE

SEMESTER I

- Introduction to Public Policy
- Social Foundations of Public Policy
- Statistical and Quantitative Analysis
- Economic Foundations of Public Policy I (Micro)
- Gender and Development
- Academic Writing

SEMESTER III

- Public Finance
- Sustainable Development
- Law and Policy
- Policy Action Lab
- Dissertation Workshop
- 2 Electives

SEMESTER II

- Economic Foundations of Public Policy -II (Macro)
- Qualitative Research Methodology
- Political Philosophy
- Program Design and Evaluation
- Democratic Participation in Policy Process
- 2 Electives

SEMESTER IV

- Capstone or
- Dissertation or
- 3 Electives

Internships = 6 non-academic credits (2/internship)

02 ELECTIVES

- Comparative Health Policy and System Analysis
- Complex Adaptive Systems Economics Approach (CAS)
- International Economic Organisations & Policy
- Indian Development - founding years to today - Politics versus Policy 2020
- Legal Empowerment of the Poor
- Sustainable Development Policy and Applied Spirituality
- Comparative Political Economy of Welfare
- Urbanisation and Development
- Dynamics Of Global Change and Local Responses
- Financing Health Care Services
- Political Economy and Global Health
- Sustainable Development Goals
- Applied Econometrics I
- Environmental Health: Policy and Practice
- Sustainable Cities: Risks, Vulnerabilities and Reliance in a Changing Climate
- Urban Housing, Community, and Public Policy
- Survey Research Design and Analysis
- Democratic Governance: Theory and Practice
- Education Policy in India
- History of Policymaking and Social Mobilisation in India
- Development Economics
- Well being and Development
- Evaluation Methods
- Applied Econometrics II
- Science & Technology Policy

03 OBJECTIVES

Applying multidisciplinary knowledge and understanding of the context in policy formulation and decision making.

Developing expertise in specific areas of public policy.

Having an ability to undertake evidence-based policy analysis, implementation, and assessment.

Building skill-based competencies to support a career as a policy maker and a leader

Using the theoretical underpinnings of public policy to inform the practical applications.

CAPSTONE

JSGP is the first public policy school in India to offer its students the opportunity to work on a Capstone Project. Students are placed with a reputed organisation, carefully selected by the faculty and the career services team, for about 6 months. During this period, students work on a real-world and implementable project under the guidance of a mentor at the assigned organisation. At the end of the term, students produce a detailed report, which is evaluated by faculty members at JSGP. Students who undertake a Capstone Project are required to complete their courses in the first three semesters so that they can reside outside the campus or Delhi NCR.



Priyam Aggarwalla, Ronit Hazarika, Dean R. Sudarshan, Ayush Singhal and Sonam Tsering on University Day Awards 2018.

CAPSTONE CLIENT INSTITUTIONS

- GIS
- PRATHAM
- SAMBODHI
- AIGGPA
- PATH
- WFP
- TATA INSTITUTE
- PHFI
- TERI
- ASPIRE INDIA
- AIGGPA
- THE ASIA FOUNDATION
- AGA KHAN FOUNDATION
- DDC
- INTERNET FREEDOM
- NIRDPR
- CPR
- ASPIRE INDIA
- ASTRUM REPUTATION ADVISORY
- BAY OF BENGAL PROGRAMME (INTERGOVERNMENTAL ORGANISATION)
- CENTRE FOR BUDGET AND GOVERNANCE ACCOUNTABILITY
- CENTRE FOR BUDGET AND POLICY STUDIES
- COUNCIL ON ENERGY, ENVIRONMENT AND WATER
- COMMONWEALTH HUMAN RIGHTS INITIATIVE
- COUNCIL ON ENERGY, ENVIRONMENT AND WATER
- CENTRE FOR POLICY RESEARCH
- CENTRE FOR SUSTAINABLE AGRICULTURE
- CENTRE FOR SCIENCE AND ENVIRONMENT
- DEPARTMENT OF ENVIRONMENT, DELHI GOVERNMENT
- E&H FOUNDATION
- EKLAVYA
- GIZ
- INDO-GLOBAL SOCIAL SERVICE SOCIETY
- CENTRE FOR MANAGEMENT OF HEALTH SERVICES, IIM AHMEDABAD

- MAHINDRA & MAHINDRA LIMITED
- MINISTRY OF TEXTILES, GOVT OF INDIA
THROUGH GT INDIA LLP
- FOUNDATION FOR MSME CLUSTERS
- NAB FOUNDATION
- NATIONAL HUMAN RIGHTS COMMISSION
(NHRC), GPO COMPLEX, NEW DELHI (INDIA)
- NATIONAL INSTITUTE OF RURAL DEVELOPMENT,
HYDERABAD
- NATIONAL COUNCIL OF APPLIED ECONOMIC
RESEARCH
- NEERMAN
- NATIONAL HEALTH SYSTEMS RESOURCE CENTRE
- NATIONAL INSTITUTE OF PUBLIC FINANCE AND
POLICY
- NITI AAYOG-ATAL INNOVATION MISSION
- NATIONAL INSTITUTE OF URBAN MANAGEMENT
(NIUM)
- OLA MOBILITY INSTITUTE
- RESEARCH AND INFORMATION SYSTEM FOR
DEVELOPING COUNTRIES
- RODIC CONSULTANT
- SANGATH
- SANKET
- SATTVA
- SAVE THE CHILDREN
- SITA
- TECHNOLOGY INFORMATICS DESIGN
ENDEAVOUR (TIDE)
- THE ENERGY AND RESOURCES INSTITUTE
- THE ASIA FOUNDATION
- U.S.-INDIA BUSINESS COUNCIL
- WATER AID
- WORLD VISION AFGHANISTAN
- CENTRE FOR PUBLIC POLICY RESEARCH (CPPR)
- ASIA FOUNDATION SRI LANKA



I PROGRAMME SPECIFICATIONS

Programme	M.A. Public Policy		
No. of Seats	60		
Course Duration	2 Years		
Eligibility	Bachelor's degree from any recognised university in India or abroad.		
Selection Criteria	Take the online Public Policy Entrance Test (PPET) on the selected date followed by a personal interview– face to face or Skype.		
Application Fee	₹ 1,000/- (Applicable for both PG programmes of JS GP)		
Programme Fee	₹ 2,50,000/- per annum*	Residential Fee	₹ 2,92,500/- per annum*
Refundable Security Deposit	₹ 50,000/-**		

*The programme fee and residential fee are subject to an annual increase of upto 10%.

**Fully refundable Security deposit of Rs. 50,000 shall be collected at the time of admission as per university rules.



INTRODUCTION

M.A. ECONOMICS

The Master of Arts in Economic programme at Jindal School of Government and Public Policy (JSGP) exposes students to the actual policy-making process. The course is designed to help students gain a solid grasp of classical paradigms in the discipline, while creatively combining diverse approaches.

An emphasis on qualitative and quantitative analytical skills enables realistic application of knowledge to solve problems experienced by economies in the real world, which is now much more interconnected, complex and uncertain than ever before. Offered in a public policy school, the programme enables identification of practical applications of insights derived from economics for public policy design and implementation.



WHY STUDY

M.A. ECONOMICS @JSGP

“A steppingstone to exciting careers that require proficiency in Economics”

Our M.A. programme fills an important gap in post-graduate Economics courses as they are presently taught in most places in India and abroad. It is designed to equip students with a solid grasp of classical paradigms in this well-established discipline, creatively combining orthodox and heterodox approaches, enabling realistic application of its insights to solve problems experienced by economies in the real world, which is now much more interconnected, complex and uncertain than ever before.

The programme has adopted a curriculum with a global perspective, taught by research-oriented, internationally trained full-time faculty. There is an emphasis on building both quantitative and analytical skills and students are exposed to new developments and research in the discipline. The curriculum offers the option of writing a research thesis under faculty supervision, which provides a solid foundation for those seeking to pursue higher studies or research in Economics. Students benefit from the presence of

several research centres established in the university.

By hosting the programme in JSGP, practical applications of insights derived from economics are identified for public policy design and implementation. There is an exposure to the actual policymaking process, unlike most graduate Economics courses taught elsewhere.

Besides laying the foundation for a theoretical understanding of Economics, our programme provides knowledge and skills that are increasingly in demand. It focuses on excellence in academia and research, policy work in corporations, consultancy companies, non-profit organisations, and governments at national, state, and local levels. All institutions with an interest in realising the Sustainable Development Goals by 2030 will find our Economics graduates fit for purpose.



I COURSE STRUCTURE

The curriculum comprises core and elective courses that are carefully balanced, drawing upon the classical tradition and the modern theoretical developments in the discipline and their application to real-world issues. The two years programme spans four semesters comprising a total of 80 credits. This includes 13 core courses (52 credits in total) and 4 electives (16 credits in total) and a dissertation comprising 12 credits. The first Semester covers 6 courses (including Critical Writing) and Second Semester covers 5 core courses, followed by 2 core and 3 electives in the third semester and 1 elective and dissertation (equivalent to three electives) in the final semester. An alternative track of studying three additional electives instead of a dissertation in the final semester is possible.

The pedagogic approach to the programme includes a combination of lectures, tutorials, group discussions, computer lab training, and one-to-one guidance in the writing of the dissertation.

The course curriculum and structure are summarised in the following table:

SEMESTER I	SEMESTER II
<ul style="list-style-type: none"> Mathematics Statistics Microeconomics I Macroeconomics I Programming Language Academic Writing 	<ul style="list-style-type: none"> Microeconomics II Macroeconomics II Econometrics I Game Theory Development Economics
SEMESTER III	SEMESTER IV
<ul style="list-style-type: none"> Econometrics II Analysis Indian Economic Development Elective 1 Elective 2 Elective 3 	<ul style="list-style-type: none"> Elective 4 Dissertation (or three electives) Elective 5 Elective 6 Elective 7
ELECTIVES	
<ul style="list-style-type: none"> Behavioural Economics Microeconomics of International Development Labour Economics Panel Data Econometrics International Trade Time Series Analysis 	<ul style="list-style-type: none"> Health Economics Complexity Economics Growth Policy Growth, Development and Employment : Data Systems in India

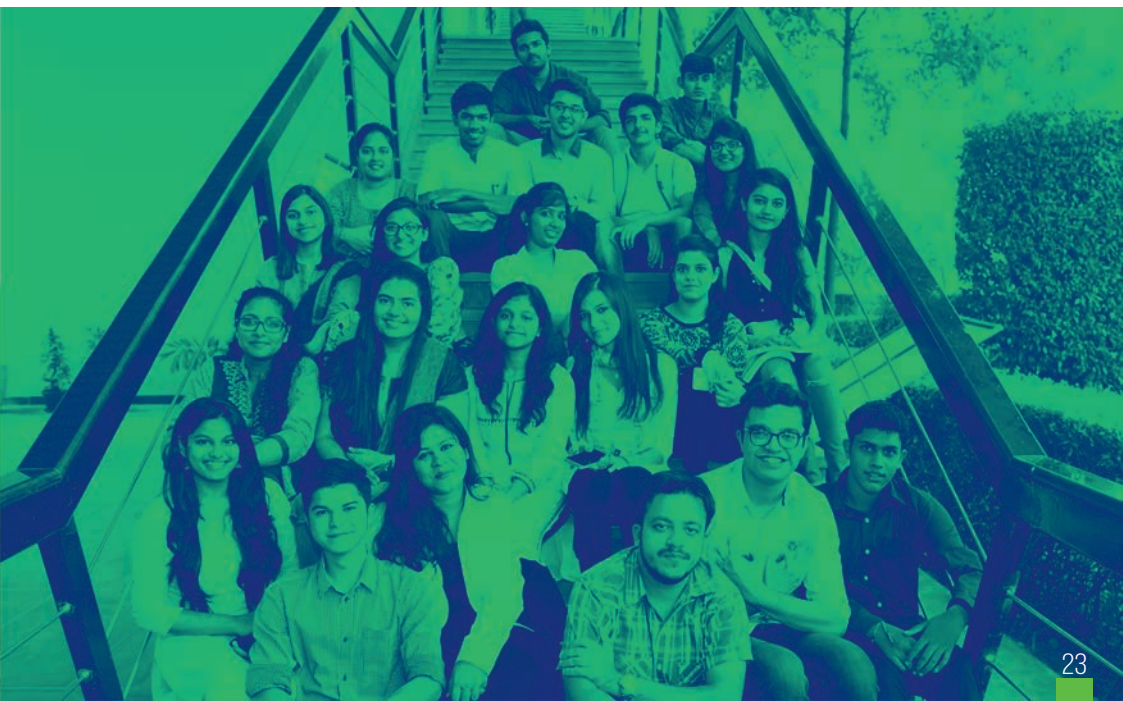


I PROGRAMME SPECIFICATIONS

Programme	M.A. Economics		
No. of Seats	30		
Course Duration	2 Years		
Eligibility	Students must have a bachelor's degree in Economics from any recognised University in India or abroad.		
Selection Criteria	Take online Masters in Economics Entrance Test (MEET) followed by a personal interview.		
Application Fee	₹ 1,000/- (Applicable for both PG programmes of JSGP)		
Programme Fee	₹ 2,50,000/- per annum*	Residential Fee	₹ 2,92,500/- per annum*
Refundable Security Deposit	₹ 50,000/-**		

*The programme fee and residential fee are subject to an annual increase of upto 10%.

**Fully refundable Security deposit of Rs. 50,000 shall be collected at the time of admission as per university rules.



INTERNATIONAL PUBLIC POLICY ASSOCIATION (IPPA)

IPPA is a global network of public policy schools. JSPP is a member of IPPA since 2016 along with:



CIDE, Centro de Investigación y Docencia Económicas, Mexico



ENAP, Escola Nacional de Administração Pública, Brasília, Brasil



ENS Cachan / Université Paris-Saclay, France



ENTPE - University of Lyon, France



FLACSO Ecuador, Facultad Latinoamericana de Ciencias Sociales Sede, Ecuador



Éupolis Lombardia, Milan, Italy



School of Public Policy and Management, Tsinghua University, Beijing, China



Lee Kuan Yew School of Public Policy, National University of Singapore, Singapore



Scuola Normale Superiore, Institute of Human and Social Sciences, Florence, Italy



Science Po Grenoble, France



University of Colorado Denver, USA



The KU Leuven Master in European Politics and Policies, Leuven, Belgium



University of Hong Kong, Faculty of Social Sciences, China

INTERNATIONAL DEVELOPMENT & PUBLIC POLICY ALLIANCE (IDPPA)

JSPP is a member of the IDPPA – a network of global public policy schools – along with:



Fundacao Getulio Vargas (FGV), Rio de Janeiro, Brazil



Russian Academy of National Economy and Public Administration (RANEPa), Moscow, Russia



Beijing Normal University, School of Social Development and Public Policy (SSDPP), Beijing, China



American University in Cairo (AUC) School of Global Affairs and Public Policy, Cairo, Egypt



School of Government and Public Policy (SGPP), Jakarta, Indonesia



School of Public Leadership, Stellenbosch University, South Africa



Tun Abdul Razak University, Kuala Lumpur, Malaysia



Environment, Development, and Sustainability Program [EDS] Chulalongkorn University, Bangkok, Thailand

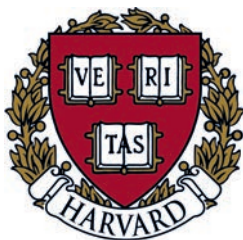


Istanbul Policy Center Sabanci University, Istanbul, Turkey

INTERNATIONAL COLLABORATIONS



UNIVERSITY OF OXFORD



HARVARD UNIVERSITY



THE UNIVERSITY OF CALIFORNIA, BERKELEY



THE UNIVERSITY OF MELBOURNE



THE UNIVERSITY OF QUEENSLAND



MONASH UNIVERSITY



UNIVERSITY OF LIVERPOOL



UNIVERSITY OF BIRMINGHAM



UNIVERSITY OF ST ANDREWS

JSGP-STUDY ABROAD PROGRAMMES



Semester Exchange



Study Abroad Program

4  **+**
**International
Collaborations**



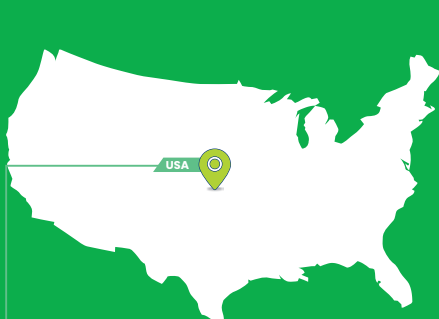
Dual Degree Program



Summer School

S.No.	Partner University	Country	Collaboration	Mobility Type
1	Harvard University	USA	JGU Wide	Summer School
2	University of Oxford	UK	JGU Wide	Summer School
3	Columbia University	USA	JGU Wide	Summer School
4	Instituto Superior de Derecho y Economia	Spain	JGU Wide	Summer School
5	University of Granada	Spain	JGU Wide	Summer School
6	Sciences Po	France	JGU Wide	Summer School
7	Universidad Torcuato Di Tella	Argentina	JGU Wide	Semester Exchange
8	University of Guelph	Canada	JGU Wide	Semester Exchange
9	University Leipzig	Germany	JSGP	Study Abroad
10	Julius-Maximilians-Universität Würzburg	Germany	JGU Wide	Semester Exchange
11	University of Göttingen	Germany	JSGP	Semester Exchange
12	Jenderal Soedirman University	Indonesia	JGU Wide	Semester Exchange
13	Airlangga University	Indonesia	JGU Wide	Semester Exchange
14	Universiti Teknologi Mara	Malaysia	JGU Wide	Semester Exchange
15	Instituto Tecnológico Autónomo de México (ITAM)	Mexico	JGU Wide	Semester Exchange
16	Comillas Pontificia Universidad	Spain	JGU Wide	Semester Exchange
17	Sabancı Üniversitesi	Turkey	JGU Wide	Semester Exchange
18	University of St. Andrews	UK	JGU Wide	Study Abroad
19	Queen Mary University of London	UK	JGU Wide	Dual Degree
20	KROK University	Ukraine	JGU Wide	Semester Exchange
21	University of California, Berkeley	USA	JGU Wide	Study Abroad
22	VNU Vietnam National University	Vietnam	JGU Wide	Semester Exchange
23	Università della Calabria	Italy	JSGP	Semester Exchange
24	Powiańska Szkoła Wyższa	Poland	JSGP	Erasmus+
25	St. Petersburg University	Russia	JSGP	Dual Degree
26	Universidad Antonio Nariño	Colombia	JSGP	Semester Exchange
27	Fundación Universitaria del Área Andina	Colombia	JSGP	Semester Exchange
28	Stellenbosch University	South Africa	JSGP	Semester Exchange
29	University of Pécs	Hungary	JSGP	Study Abroad & Summer School
30	FGV School of Public Policy	Brazil	JSGP	Semester Exchange
31	Liverpool John Moores University	UK	JSGP	Semester Exchange
32	University of Queensland	Australia	JSGP	Dual Degree
33	University of Melbourne	Australia	JSGP	General Agreement
34	Monash University	Australia	JSGP	Dual Degree
35	University of Birmingham	UK	JSGP	Semester Exchange
36	Macquarie University	Australia	JSGP	Semester Exchange
37	North South University	Bangladesh	JSGP	Semester Exchange
38	Beijing International Studies University (BISU)	China	JSGP	Semester Exchange
39	University of National and World Economy	Bulgaria	JSGP	Semester Exchange
40	China Three Gorges University	China	JSGP	Semester Exchange
41	Bradford University	UK	JSGP	Semester Exchange
42	Fenerbahçe University	Turkey	JSGP	Semester Exchange
43	University of Essex	UK	JSGP	Semester Exchange
44	Universidad Católica Oriente	Colombia	JGU Wide	Semester Exchange
45	Griffith University	Australia	JGU Wide	Study Abroad
46	University of Liverpool	UK	JGU Wide	Study Abroad

CONTINENT WISE COLLABORATION



USA

- Harvard University
- Columbia University
- University of California, Berkeley



Canada

Colombia

- University of Guelph
- Universidad Antonio Nariño
- Fundación Universitaria del Área Andina
- Universidad Catolica Oriente



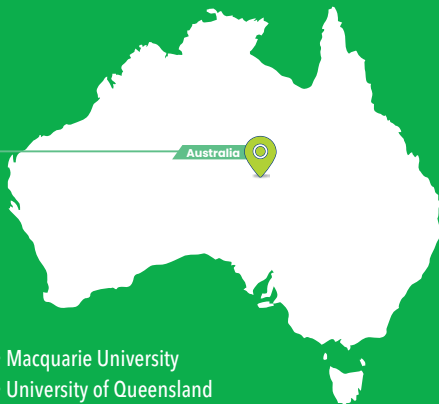
UK

Germany

Spain

Italy

- University of Oxford
- University of Essex
- Queen Mary University of London
- University of Birmingham
- University of Liverpool
- University of Bradford
- Liverpool John Moores University
- University of Gottingen
- Leipzig University
- Julius-Maximilians-Universität Würzburg
- Comillas Pontificia Universidad
- Instituto Superior de Derecho y Economia
- University of Granada
- Universita della Calabria



Australia

- Macquarie University
- University of Queensland
- University of Melbourne
- Monash University
- Griffith University

INTERNSHIPS & PLACEMENTS

For UG programme



Internships are short periods of professional experience. Summer internships generally last from 4-8 weeks; students are encouraged to take an internship at the end of 1st and 2nd years. The Office of Career Services (OCS) helps students in securing internships. The analytical rigour and quantitative skills that the B.A. (Honours) programme develops, affords graduating students several opportunities: from academia to investment banking. Irrespective of the path they choose after their Bachelors; students with a Bachelor's Degree in Economics, on average, are some of the most sought after and highly paid. Some students have built on their internships and have taken up research positions at places like ICRIER. Some others have been offered jobs at organisations like Delloite, PWC, Ernst & Young and the Economist.

For PG programme

Placement Committee is a student-led placement committee, which is entrusted with the responsibility of facilitating internships and recruitment process for the School. The committee also organizes resume writing and LinkedIn profile creation workshops. It also invites potential recruiters to campus to interact with students



OPPORTUNITIES

Deloitte.



DELHIVERY

CDPP CENTRE FOR DEVELOPMENT POLICY AND PRACTICE

Hindustan Times

NDTV

MAX Bupa
HEALTH INSURANCE

Kalam Foundation
Creating a Kalamian Society

**WHERE
JSGP STUDENT
HAVE INTERNED & WORKING**

Finlatics
ENABLING INSIGHTS



HDFC
ASSET MANAGEMENT COMPANY LIMITED



Capgemini

BLUE STAR



youth for seva
Aspiration is the path to quality

Chegg

Edelweiss
Ideas create, values protect

**MANTHAN YUVA
SANSTHAN**





ASSOCIATION FOR PUBLIC POLICY EDUCATION (APPE)

Association for Public Policy Education (APPE) is an Association registered under the Haryana Registration and Regulation of Societies Act, 2012 in January 2021 with its registered office at the Jindal School of Government and Public Policy (JSGP), O.P. Jindal Global (Institution of Eminence Deemed to be) University, Sonipat. The JSGP took the lead in establishing such an Association for the development of the public policy discipline and practice by encouraging collaboration and partnerships between public policy scholars, and practitioners including the institutions involved in teaching, training, and research in public policy. The objective is to advance and strengthen the discipline and practice of public policy in India.



Association for
Public Policy
Education

OFFICE BEARERS OF THE ASSOCIATION

R. Sudarshan, (President),

Dean, Jindal School of Government and Public Policy, OP Jindal Global University, Sonipat

Sudhir Kumar Satpathy, (Vice President 1),

Director, School of Public Health, KIIT University, Bhubaneswar

Jyotsna Jha, (Vice President 2),

Director, Centre for Budget and Policy Studies, Bengaluru

Dhanuraj (Secretary),

Chairperson, Centre for Public Policy Research, Cochin.

Amir Ullah Khan, (Treasurer)

Development Economist, Hyderabad

Tanvir Aeijaz, (Member),

Associate Professor, Delhi University, Delhi

Ajay Pandey, (Member),

Professor, Indian Institute of Management, Ahmedabad

Madhushree Sekhar, (Member),

Professor, Tata Institute of Social Sciences, Mumbai

THE AIMS AND OBJECTIVES OF THE ASSOCIATION ARE AS FOLLOWS

- To advance and strengthen the discipline and practice of public policy in India by leveraging the strength of the public policy schools and institutions in India.
- To organize an annual public policy conference.
- To publish a bi-annual journal of public policy, occasional papers, newsletters, and books.
- To promote the academic exchange of students and faculty between the institutions of public policy in India and abroad.
- To foster experiential learning for students of public policy by facilitating internships, fellowships, research projects for students.
- To stimulate participation in the refining of public policy theory and practice in India, as well as in the activities of the Association of Public Policy Education (APPE)
- To support activities that foster Public Policy aspects and initiatives in India and abroad.

STUDENT LED INITIATIVES



SOCH

SOCH is a student-driven initiative at JSGP that organises regular screenings of documentaries and other films followed by discussions, on issues relating to politics, society and international relations. The objective of the club is to enable critical thinking on social issues and this initiative has resulted in a vibrant blog that showcases students' writings about issues and films discussed in SOCH.

➤ <https://sochjgu.wordpress.com/>

POLICY CORNER

Policy Corner is an online writing space for the JSGP Student community. It was started by students to inculcate a culture of writing among the JSGP students. The main objective of the policy blog is to provide students a platform to discuss local, national and global policy issues with a wider audience. Right from its inception, Policy Corner has been a popular medium of debate and deliberation. It has published interesting, thought-provoking, and relevant content on policy and social issues.

➤ <https://policycornerblog.wordpress.com/>

PUBLIC POLICY CLUB

Public Policy Club is an initiative where students apply and test their theoretical learnings on real-life problems. The Club organises activities that play a crucial part in understanding the real-life challenges by looking at social issues through the lens of governance, society, economy and culture. The Club also undertakes policy brief writing and supports fellow members to present papers at various conferences.

ENACTUS

Enactus is the JGU chapter of a global network fostering socially responsible entrepreneurship is an initiative of JSGP students. Student members come up with business ideas, conduct market surveys, evaluate social impact, create sustainable business plans and compete with teams from all over the world. Enactus offers our students hands-on experience of conceptualising and setting up businesses that address some of the most pressing problems of the world.

ARTHANITI

Arthaniti stands for growth and with the synergy of cooperation and development, we seek to create a close-knit community that adheres to inclusion of people from various subject-fields. While Economics is where the understanding of the society begins, our idea of progress is based upon inclusion and collaborative effort.

► <https://arthanitijgu.wixsite.com/arthaniti>

YOUTH PARLIAMENT

The society attempt to solve real life issues/crises in a simulated and moderated environment, giving the members an opportunity to train themselves at the art of logical argumentative public speaking, policy formulation and analysis, critical thinking, conflict resolution, consensus making etc. They also conduct weekly discussions on events happening around our “global village” - to foster the skill of listening to a view point which we may not necessarily, always, do agree with.

FEMINIST ECONOMICS & POLICY INITIATIVE

Founded in September 2021 at the School of Government and Public Policy, O.P. Jindal Global University, Feminist Economics & Policy Initiative (FEPI) is an attempt towards democratising knowledge creation and representation in economic research and policy. We wish to create a space for individuals to openly discuss and debate issues of gender and that of other marginalised social groups, challenging the current status-quo of biased transactions in the market and non-market spheres. A university space, thus, provides us with an opportunity to mainstream feminist activism, fuelling policy advocacy and action, from the ground up.

► <https://fepijgu.wordpress.com/>



RESEARCH CENTRES

JSGP is a research-driven school. It is dedicated to generating ideas, knowledge, and practices of democratized development. It has the following research centres:

- Centre for Ethics, Law and Political Economy
- Centre for Development and Finance
- Centre for Sustainability
- JSGP Policy Research Lab
- Centre for Complexity Economics, Applied Spirituality and Public Policy (CEASP)



“Sharpening ideas, deepening understanding of a complex world”

PUBLICATIONS

JOURNAL

JSGP publishes the Jindal Journal of Public Policy (JJPP), a journal to disseminate rigorous theoretical, applied, and empirical research. Each issue of the journal carries original peer-reviewed papers.



Faculty Workshop on 29th July 2019.

REPORT

The State of Justice in India Report (SJIR) is being prepared by JSGP to contribute to policymaking on the justice system and rule of law in the country. The report is pioneering as it aims to analyse the legal and policy dimensions of the justice delivery system in India. The report will describe the situation of the state as well as non-state justice mechanisms. The upcoming report maps the terrain of the justice system in India by identifying the various agencies engaged in law enforcement and adjudication of disputes, and authorities that regulate these agencies and examine the processes through which such regulation takes place.

The aim is to contribute to improving policies on law enforcement, dispute resolution, access to justice and legal empowerment, and data collection by governmental and non-governmental agencies.

I FACULTY @JSGP



MR. R. SUDARSHAN

Dean and Professor

B.A. (Hons.) (Economics), (Bangalore University);
M.A. (Economics), (Delhi School of Economics);
M.Phil. Politics, (University of Oxford)



DR. NAREESH SINGH

Executive Dean and Professor

B.Sc. (Natural Sciences), University of Guyana, Georgetown;
M.Sc. (Agriculture) Indian Agricultural Research Institute
(IARI), New Delhi;
Ph.D. (Environmental Sciences), University of West Indies, Jamaica



DR. RAJEEV MALHOTRA

Professor

B.A. (Hons.) (Economics) (University of Delhi);
M.A. (Delhi School of Economics);
M.Sc. (London School of Economics)
Ph.D. (JNU, New Delhi)



DR. MILINDO CHAKRABARTI

Professor

B.A. (Economics);
M.A. (Economics);
Ph.D. (University of North Bengal)



DR. BHUVANESHWARI RAMAN

Professor

B.Arch; M.Sc. (Asian Institute of Technology, Bangkok);
M.Sc. (Social Policy) (London School of Economics);
Ph.D. (London School of Economics)



DR. INDRANIL MUKHOPADHYAY

Professor

B.Sc. (Hons.) (Economics) (University of Calcutta);
M.A. (Economics); M.Phil.; Ph.D. (JNU, New Delhi)



DR. KAVERI ISHWAR HARITAS

Professor

LL.B. (Bangalore University);
Master in Development Studies;
Ph.D. (Graduate Institute of International &
Development Studies, Switzerland)



DR. SONALI ROY

Professor

B.Sc. (University of Calcutta);
M.Sc.; Ph.D. (ISI, Kolkata)



DR. SUBARAN ROY

Professor

B.Sc. (Hons.) (University of Calcutta);
M.A. (Jawaharlal Nehru University, New Delhi);
M.S., Ph.D. (Louisiana State University)



DR. SUBHASISH RAY

Professor

B.Sc. (Hons.) (Economics) (St. Xavier's College, Kolkata);
M.A. (Economics); M.Phil. (Economics) (JNU, New Delhi);
Ph.D. (Political Science) (University of Rochester)



DR. SUMEET MHASKAR

Professor

B.A. (History & Political Science) (University of Mumbai);
M.A. (Political Science);
M.Phil. (Political Science) (JNU, New Delhi);
D.Phil. (Oxford)



DR. SWAGATO SARKAR

Professor

B.Sc. (University of Calcutta);
M.A. (TISS, Mumbai);
M.Phil., D.Phil. (Oxford)



DR. SWETASREE ROY

Professor

B.A. (Hons.) (University of Calcutta);
M.A. (International Relations); M.Phil. (JNU, New Delhi);
M.A. (Political Science) (Louisiana State University);
Ph.D. (Louisiana State University)



DR. VIVEK U. PADVETNAYA

Professor

M.B.B.S (University of Mysore);
D.B.M. (ICFAI University);
M.Sc. (Health Policy) (LSE & LSHTM);
D. Phil. – Public Health (Political-Economy)
(University of Oxford)



DR. AVANINDRA NATH THAKUR

Associate Professor

B.A. (Economics) (University of Delhi);
M.A.; M.Phil.; Ph.D. (JNU, New Delhi)



MS. GEETA SINHA

Associate Professor

B.A. (Hons.) (Economics) (Sambalpur University);
P.G. Diploma in Rural Dev. (Xavier Institute of Social Service);
M.A. (Gender and Development) (IDS, University of Sussex);
Ph.D. Candidate (Oxford Brookes University)



DR. DEBAJIT JHA
Associate Professor

B.A. (Economics) (University of North Bengal);
M.A. (Economics) (Banaras Hindu University);
Ph.D. (JNU, New Delhi)



DR. KRISHANU KARMAKAR
Associate Professor

B.Sc. (University of Calcutta);
M.A. (University of Delhi);
M.A.; Ph.D. (Georgia State University)



DR. MANINI OJHA
Associate Professor

B.A. (Economics) (University of Delhi);
M.A. (Economics) (JNU, New Delhi);
M.A. (Economics); Ph.D. (Southern Methodist University)



DR. NAVEEN JOSEPH THOMAS
Associate Professor

B.Sc. (University of Delhi);
M.Sc. (TERI University);
Ph.D. (Delhi School of Economics);



DR. NAMESH KILLEMSETTY
Associate Professor

B.Tech. (Motilal Nehru National Institute of Technology);
M.Tech. (CEPT, Ahmedabad);
Ph.D. (University of Massachusetts, Boston)



DR. PRADEEP GUIN
Associate Professor

B.Sc. (Statistics), M.Sc. (Statistics) (University of Delhi);
Ph.D. (University of Maryland, Baltimore County)



DR. SUDIP PATRA
Associate Professor

B.Sc. (University of Calcutta);
M.Sc. (Coventry University, UK);
M.B.A. (International Business & Management);
Ph.D. (Glasgow University) Associate Fellow, HEA, UK;



DR. SUNAINA DHINGRA
Associate Professor

B.A. (University of Delhi);
M.A. (Jamia Milia Islamia University);
Ph.D. (Delhi School of Economics)



DR. VIDYA SUBRAMANIAN
Associate Professor

M.A. (TISS, Mumbai);
M.Phil.; Ph.D. (JNU, New Delhi)



DR. RAHUL MENON
Associate Professor

MA (Economics) (Gokhale Institute of Politics and Economics);
B.A. (Economics and Statistics) (St Xavier's College, Mumbai)
MPhil (Economics) (JNU, New Delhi);
Ph.D (Economics) (JNU, New Delhi);



DR. APARNA AGARWAL
Assistant Professor

B.A. (University of Delhi)
M.A. (JNU, New Delhi)
M.Phil. (JNU, New Delhi)
D.Phil. (University of Oxford)



DR. DHRITIMAN GUPTA
Assistant Professor

B.A. (Jadavpur University);
M.A. (Delhi School of Economics, Delhi);
M.E. (Toulouse School of Economics, France);
Ph.D. (Indian Statistical Institute, Delhi)



DR. GURPREET SINGH
Assistant Professor

B.A., M.A. (Economics) (Panjab University, Chandigarh)
M.Phil (Applied Economics),
Ph.D. (Economics) (JNU, New Delhi)



MS. KOMAL SAHAI
Assistant Professor

B.A. Hons.; M.A. (University of Delhi);
Ph.D. Candidate (Indian Statistical Institute, New Delhi);



DR. NIKHIL DAMODARAN
Assistant Professor

B.A. (Economics) (University of Delhi);
M.A. (Economics); M.Phil. (Applied Economics) (JNU, New Delhi);
Ph.D. (Louisiana State University)



DR. PRACHI BANSAL
Assistant Professor

B.A. (Economics), (University of Delhi)
M.A (Economics), PhD (Economics), (JNU, New Delhi)



DR. PRITI AGARWAL
Assistant Professor

B. A. (Economics), (University of Delhi)
M. A. (Economics), (IGNOU- Gold Medalist in Economics)
Ph. D. (Economics), Centre for International Trade and Development, (JNU, New Delhi)



DR. SHIVANGI CHANDELS
Assistant Professor

B.Sc. (Hons.) (University of Delhi);
M.Sc. (IIT Kanpur);
Ph.D. (IGIDR, Mumbai)



DR. SONAL DUA
Assistant Professor

B.A. (University of Delhi);
M.A. (JNU, New Delhi);
Ph.D. (University of Delhi)



DR. SUNETRA GHATAK
Assistant Professor

M.A. (Visva-Bharati University, West Bengal);
Ph.D. (JNU, New Delhi)



DR. SYED SHARIQ HUSAIN
Assistant Professor

M.Sc. (Jamia Millia Islamia, India);
Pre PhD (JNU, New Delhi);
Ph.D. (JNU, New Delhi)



DR. TIRTHA CHATTERJEE
Assistant Professor

B.Sc.; M.Sc. (University of Calcutta);
M.Phil.; Ph.D. (IGIDR, Mumbai)



MR. VATSALYA SRIVASTAVA
Assistant Professor

B.A. (Economics) (University of Delhi);
M.Sc. (Economics),
Ph.D. Candidate (Tilburg University)



MR. PRATIK PHADKULE
Assistant Professor of Practice

B.A., M.A. (Social Work) (TISS, Mumbai);
M.P.A. (Central European University, Budapest)



DIVYA BHATNAGAR
Lecturer

B.Tech. (Gautam Budh Technical University);
M.P.P. (The University of Chicago)



MR. MANAS PATHAK
Lecturer

B.Sc. (International Economics) (Graduate Institute
of International and Development Studies, Geneva)



MS. ELIZABETH LYN
Assistant Lecturer

B.A. (Hons.) (Economics) (University of Delhi)
M.A. Economics (University of Madras)



MS. SIDDIQUI SABEELA IQBAL
Assistant Lecturer

B.Sc. (Dr. A.H.R Shia Degree College, Jaunpur);
M.A. (Azim Premji University, Bangalore)



MS. ZARA HASNAIN
Assistant Lecturer

B.A. (University of Delhi);
M.A. (O.P. Jindal Global University)

JSGP ADMINISTRATION



MS. MANI MALA
Sr. Manager & Academic Coordinator, JSGP

☎ +91 839 6907 364
✉ mmala@jgu.edu.in



MR. LALIT MOHAN
Manager & Academic Coordinator, JSGP

☎ +91 702 785 0110
✉ lmsnepolia@jgu.edu.in

AMENITIES & FACILITIES

- University halls of residence for students consists of several blocks of buildings designed by a French architect.
- The university has 24-hour health centre. A full time medical residential medical officer and nurses are on duty 24x7 on campus. Medicines are provided as per doctor's prescriptions. In addition, an Ambulance facility and on campus pharmacy is also available on a 24x7 basis.
- JGU has employed Washex hospitality solutions as the sole and integrated laundry service provider on the campus.
- The campus has 155 well trained male and female security guards +night patrolling by armed guards + a strong perimeter wall with security lights + over 1080 CCTV camera at strategic points round-the-clock.
- Sports and fitness activities are an integral component of the university with badminton court, table tennis, basketball courts, cricket ground and practice pitches, tennis court, football, volley ball court, swimming pool, gymnasium, yoga and aerobics
- Fully wireless campus with high-tech classrooms and modern halls of residence.
- Food services are available in the dining hall of the university on self-service basis. World class food court with wide range of vegetarian and non-vegetarian.
- An ICICI Bank branch is available on campus. There are HDFC, ICICI and Yes Bank ATMs too.
- The post office extension counter and courier office are located on the ground floor near the main reception area.
- Centre for Wellness and Counselling Services is available for well-being of students.



FOOD COURT

A world class food court - Biswamil Bistro reflects the global aspirations and local traditions of JGU. Outlets at this food court are providing multi-cuisine options through brands such as Subway, Krishna Tunga, Bercos, Bikanervala, Moti Mahal, Karims, Chicago Pizza, Burger Point, etc. A wide range of vegetarian and non-vegetarian food options are thus available for the benefit of the students, faculty, staff and guests of JGU.

CAFÉ COFFEE DAY TUCK SHOP

Café Coffee Day Express Tuck Shop at the Ground Floor in Tower One (T-1) of the Academic Building. It serves Tea/Coffee and light snacks. Coffee Day tuck shop operates from 9:30am to 10:00pm.

JUICE & MORE TUCK SHOP

Juice & More is a juice Tuck Shop operating at the Ground Floor in Tower Three (T-3) of the Academic Building. It serves fresh juices, shakes and some light snacks. Tuck shop operates from 11:00 am to 10:00 pm.

NESTLE TUCK SHOP

A Tuck Shop run by Nestle at the Ground Floor (T-3) of the Academic Building operates for students during the lecture breaks and is convenient for a quick grab of coffee. The café operates from 10:00 am to 6:00 pm.

CONVENIENCE STORE

A convenience store is also available in University premise which works between 11:00 am to 11:00 pm where you can buy daily need items.

AMUL ICE CREAM PARLOR

Amul Ice Cream Parlor offers Amul ice cream and dairy products, Tea/coffee, milkshakes, light snacks are also available at the Amul shop. Amul ice cream parlor operates from 11:00 am to 12:30 in the midnight.

LOOKS TAILORING HOUSE

A tailor shop offering a range of swimming costumes, sportswear, undergarments with facility of clothes alterations/stitching. The timings are from 11 am to 11 pm.

WELLNESS PHARMACY

A 24/7 pharmacy operates opposite to Health Centre.

EVER FRESH JUICE SHOP

Fresh fruit and juice shop offers variety of fresh fruits and fresh juices, Tea/coffee, Milkshakes, light snacks are also available at the juice shop. Fresh fruit and Juice shop operates from 10:00 am to 12:30 in the midnight.

NATIO BEAUTY PARLOUR

A women's beauty parlour operates from the SH-3 Girls Student Hostel Block. The timings are from 11 am to 8 pm with Tuesday's being weekly off's.

JUST LOOK MEN'S SALON

A Men's Saloon operates from SH-1 Boys Student Hostel Block. The timings are from 10 am to 9 pm with Tuesday's being weekly off's.

CHAI TAPRI

Chai Tapri situated near the Gym offers tea/coffee, light snacks, mocktails. Chai Tapri operates from 02:00pm to 02:30 am in the night.



LIFE@JGU



Singer Jubin Nautiyal performs during Biswamil Fest at JGU on 22 October 2019



Students celebrating Biswamil Fest at JGU on 22 October 2019



Veteran Actor Naseeruddin Shah performs Gabriel Emanuel's Einstein at JGU on 30 August 2019

ADMISSION PROCEDURE

Applicants for the UG and PG programmes at JSGP can apply direct through our online admission form available at our website. Kindly scan QR code / follow URL to visit our admission page.



<https://jgu.edu.in/admissions/>



Scan for Admissions

EDUCATION LOANS

JGU has established tie-ups with AVANSE (ICICI), Dena Bank and Credila (HDFC) to facilitate educational loans for students who are admitted to the UG and PG programme.

SCHOLARSHIPS FOR UG

O.P. Jindal Global University awards Merit cum Means Scholarships (MCM) every year. The MCM Scholarship entitle students to tuition fee waivers. The eligibility criteria includes annual family income, XII board score, JSAT or standardized examination results and faculty interview score. Weightage will also be given to curricular and extra-curricular achievements.

SCHOLARSHIPS FOR PG

O.P. Jindal Global University awards Merit cum Means Scholarships (MCM) every year.

Continuance of this scholarship to the next semester is based on: *Academic Performance, Discipline, Minimum 75% Attendance, Participation in academic and non-academic events.*

RESEARCH ASSISTANTSHIPS:

Students with a strong academic performance and inclined towards research, are provided with paid research assistantships under the guidance of a faculty.

For admission, contact: —

UG PROGRAMMES

+91 741 961 3582

+91 741 961 3440

PG PROGRAMMES

+91 702 785 0346

+91 702 785 0289

JSGP ADMISSIONS OFFICE

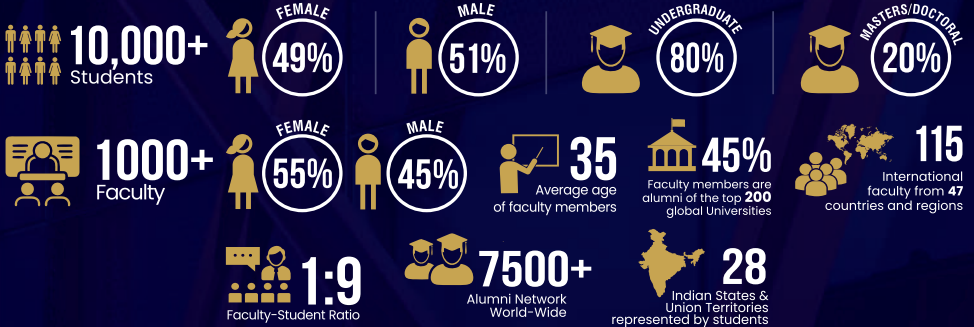
UG Programmes ✉ jsgpba.admissions@jgu.edu.in

PG Programmes ✉ jsgp.admissions@jgu.edu.in

www.jgu.edu.in/jsgp



JGU @ A GLANCE



12 SCHOOLS



45+ Programmes

30+ Undergraduate Programmes
15+ Postgraduate Programmes
1 Doctoral Programme



Jindal Global Law School
India's First Global Law School



JINDAL GLOBAL BUSINESS SCHOOL
India's First Global Business School



Jindal School of International Affairs
India's First Global Policy School



Jindal School of Government and Public Policy
India's First Policy Think Tank



Jindal School of Liberal Arts & Humanities
India's First Personalized Learning Model



Jindal School of Journalism & Communication
India's First Global Journalism School



JINDAL SCHOOL OF ART & ARCHITECTURE



JINDAL SCHOOL OF BANKING & FINANCE
India's First Global Finance School



JINDAL SCHOOL OF ENVIRONMENT & SUSTAINABILITY



Jindal School of Psychology & Counselling
India's First Global Psychology School



JINDAL SCHOOL OF LANGUAGES & LITERATURE
India's First Global Language School



JINDAL SCHOOL OF PUBLIC HEALTH & HUMAN DEVELOPMENT

RESEARCH



5000+ Publications



55 Interdisciplinary research centres

3 Research & capacity building institutes



JINDAL INSTITUTE OF BEHAVIOURAL SCIENCES



INTERNATIONAL INSTITUTE FOR HIGHER EDUCATION RESEARCH & CAPACITY BUILDING (IIHECB)
OF JINDAL GLOBAL UNIVERSITY

INTERNATIONAL COLLABORATIONS



385+

Collaborations with International Universities & Higher Education Institutions



10

Forms of Global Partnerships



65+

Countries & Regions



200+

Faculty & Student exchange collaborations



45

Countries represented by students

ACCREDITATION & RANKINGS



Granted Autonomy by University Grants Commission



Ranked 2nd Swachh Campus Ranking 2019 Government of India



Accredited 'A' Grade by National Assessment and Accreditation Council



TOP 700 UNIVERSITIES GLOBALLY
QS WORLD UNIVERSITY RANKINGS 2023



TOP 150 UNDER 50 GLOBALLY
QS YOUNG UNIVERSITY RANKINGS 2022



RANKED NO.1 PRIVATE UNIVERSITY IN INDIA
QS WORLD UNIVERSITY RANKINGS 2023



RANKED NO.1 LAW SCHOOL IN INDIA
QS WORLD UNIVERSITY RANKINGS 2023 BY SUBJECT



O.P. JINDAL GLOBAL UNIVERSITY
INSTITUTION OF EXCELLENCE DEEMED TO BE
A Private University
A Private University Promoting Public Service

📍 Sonapat - 131001, (NCR of Delhi)

JGU - An Initiative of Jindal Steel & Power Foundation

🌐 www.jgu.edu.in



@JINDALGLOBALUNI